

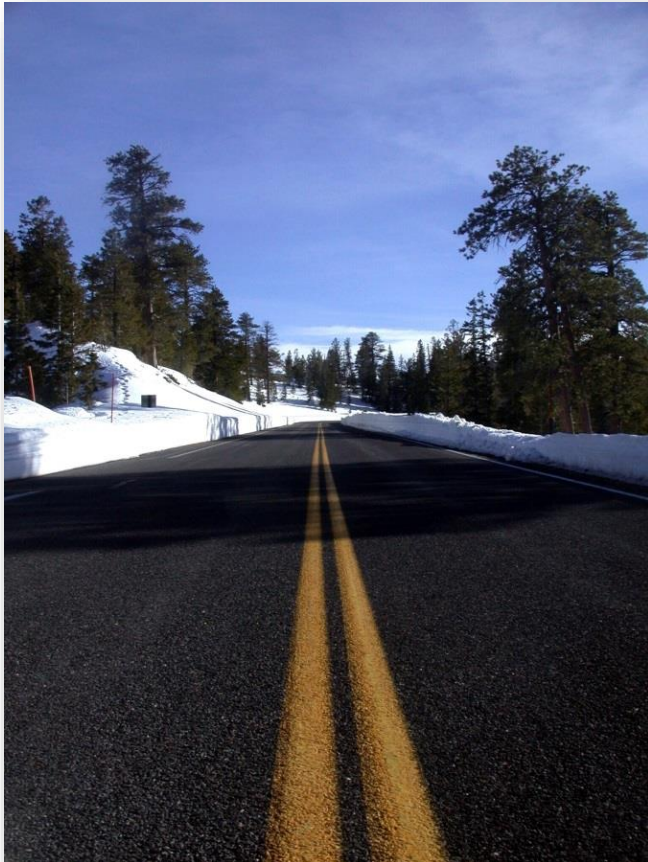
FAST SYSTEMS

A LOOK AT AUTOMATED ANTI-ICING SYSTEMS

Eric Cottone - NRITS 2016
Chattanooga, TN

WWW.BOSCHUNGAMERICA.COM

COMPANY OVERVIEW



- Partner of Boschung Group in Switzerland
- 70 Years of Manufacturing Experience
- Innovating sensor technology since 1978
- 2000+ RWIS deployed worldwide
- Over 250 FAST systems worldwide
- 50 FAST systems in North America
- Boschung America - Established 2002
 - Engineering
 - Project Management
 - Sales & Marketing
 - Technical Maintenance
 - Information Technology

Leading provider of Advance Weather Technology for Roadways

SOLUTIONS OVERVIEW



RWIS



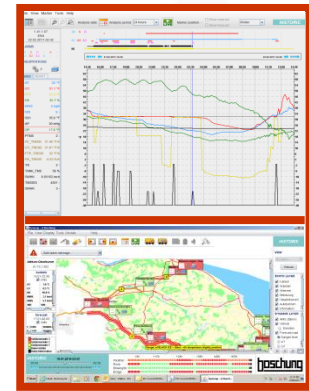
FAST

➤ Systems...

- Road Weather Information
- Fixed Automated Spray Technology
- Automatic Vehicle Location
- Maintenance Decision Support



AVL



MDSS

Monitor, Predict, Plan, Act

WHAT IS FAST

Fixed Automated Spray Technology



A Scientific Approach

Based on RWIS measurements of critical factors and other variables, accurately predict and prevent icing by automating the delivery of anti-icing solution, which artificially lowers the freeze point of liquid on the pavement surface.

Intelligent Roads & Bridges

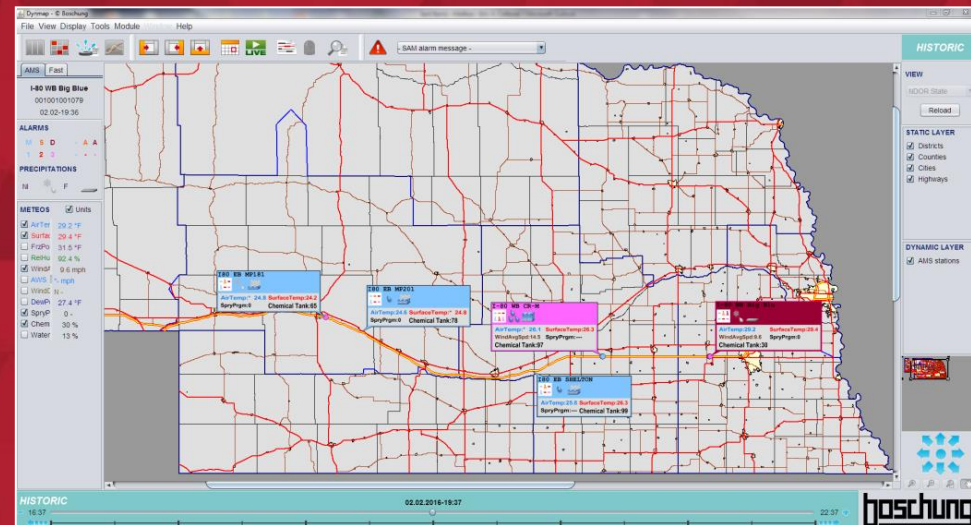
BENEFITS OF FAST

- Increase Safety
- Reduce Liability
- Reduce Chemical Usage
- Efficiently Deliver Liquid Anti-Icing Solution
 - Improve effective range of ice protection
 - Increase infrastructure Life Span
 - Reduce Environmental Impact

NDOR I-80 FAST



Nebraska Department of Roads has deployed six fixed automated spray systems (FAST) on I-80, the most highly traveled interstate in the United States. This critical trucking route is essential to the economy of NE and the US. The FAST systems ensure the interstate remains open by keeping 16 critical bridges ice free during inclement weather by automatically delivering anti-icing chemical before the bridges freeze. NDOR plans to add several more.



EXAMPLES



Nevada DOT – Galena Creek I-580



Hennepin County, Minnesota – Lowry Ave



Minnesota DOT – St. Anthony Falls 35W



WWW.BOSCHUNGAMERICA.COM