

Video Sharing by TDOT and other DOT's - Faster, Safer Incident Response



Challenge:

How does an agency most efficiently coordinate with other agencies to respond to and manage an event?

- Fire/Paramedic
- Local and State Police
- Towing companies
- Hazmat
- Local officials
- DOT Response Vehicles
- 911 Centers
- Media
- Public

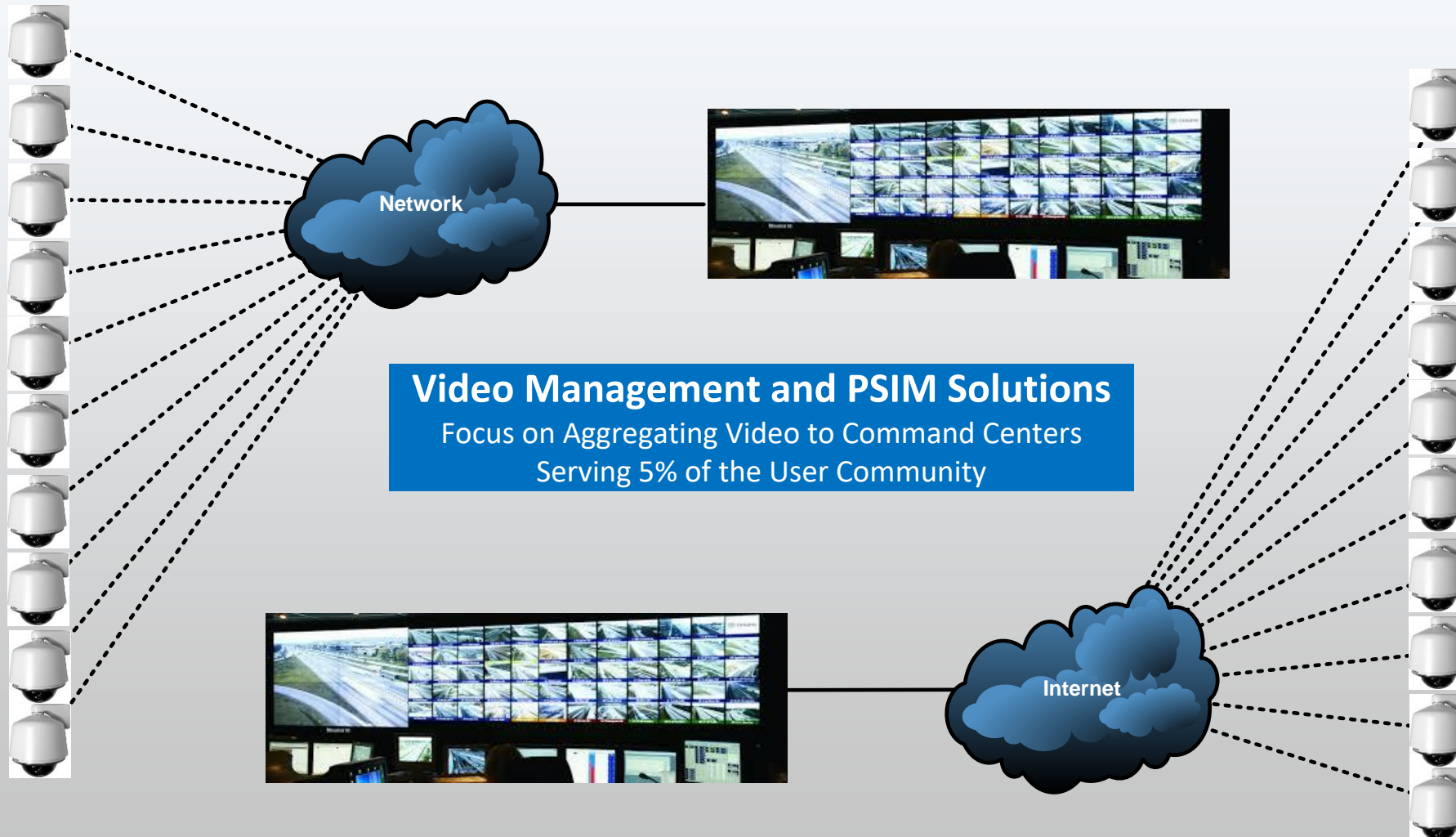


Response and management requires procedures AND information



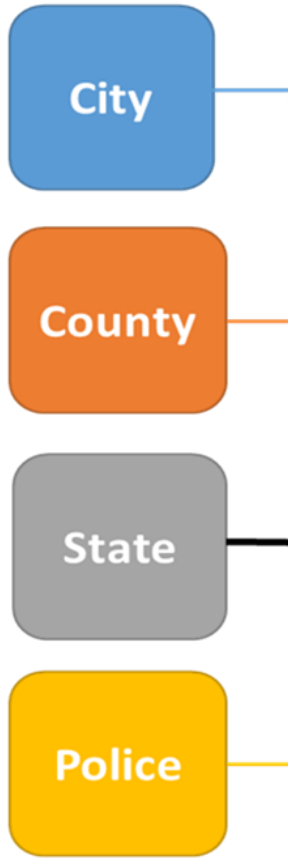
- What do I know about it – (sharable data)
- Can I talk about it – (communications)
- Can I (we) see it – (live video)
 - Who can see it typically?

Traditional Video Management



What about the other 95%?

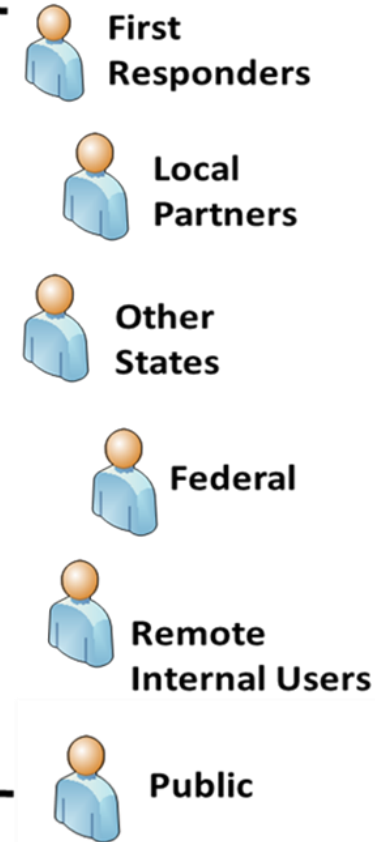
Sources



Challenges

- Video bandwidth is too large
- Network limitations
- Proprietary video formats/codecs
- Limitations with VMS
- Legacy analog cameras, encoding / decoding
- IT security concerns
- Diversity and number of video consumers
- Control concerns
- Cost

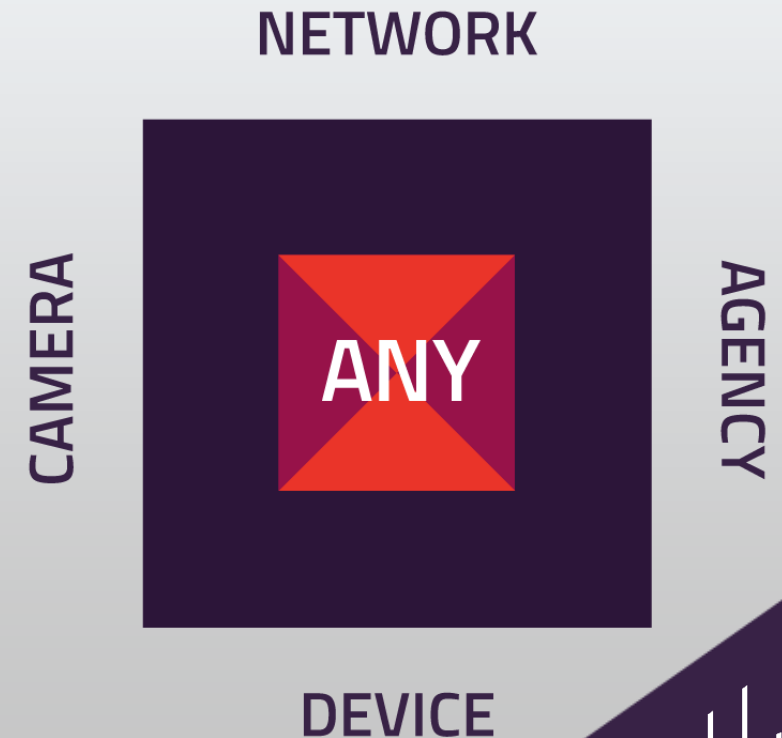
Consumers



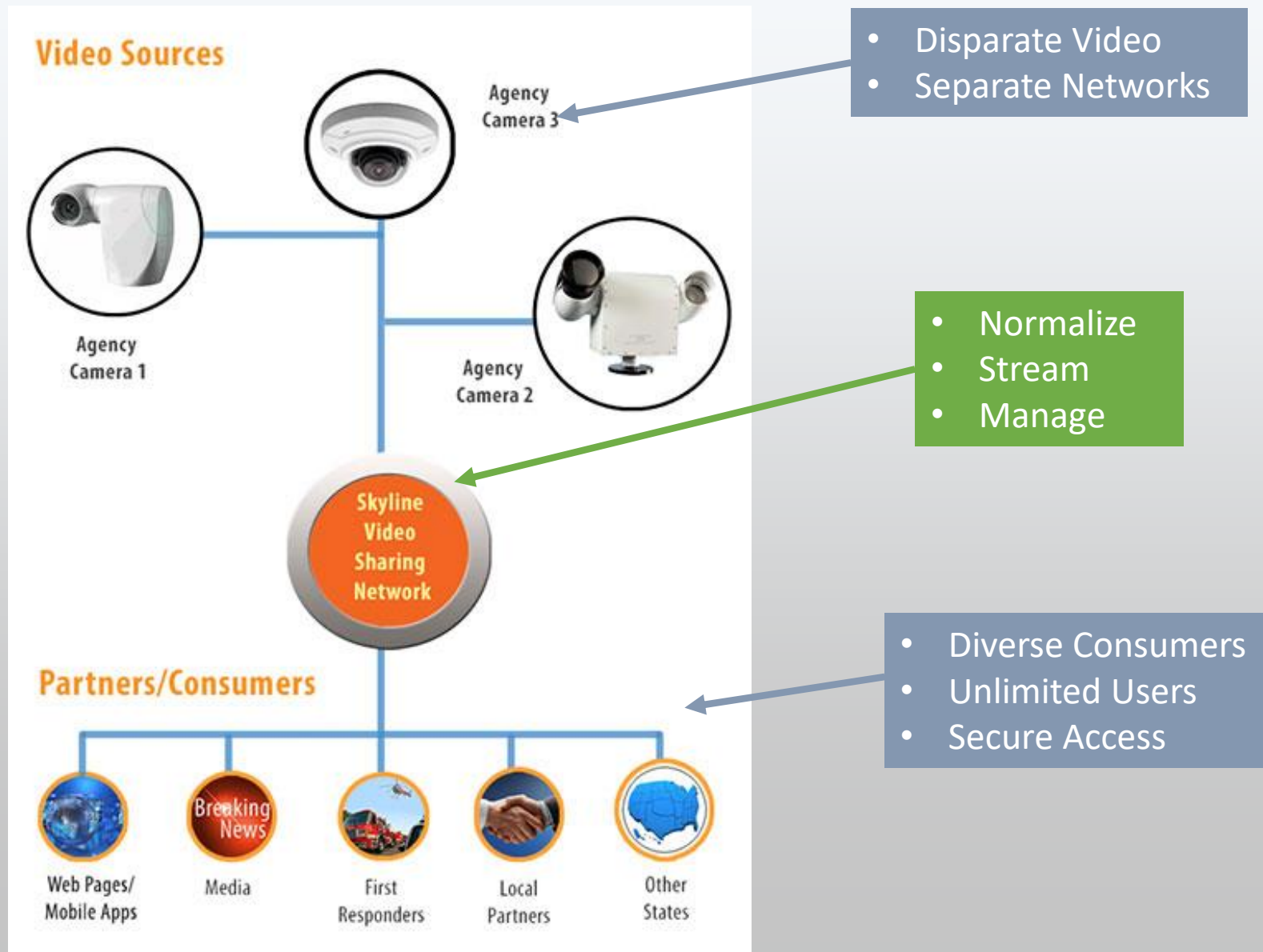
What does TDOT provide?

Platform that allows agencies to efficiently and securely share **live video** and **data** with large groups of consumers, internal stakeholders and partners.

- Any camera (Traffic, Intersection, RWIS, Security...)
 - Any manufacturer (Analog or IP)
 - Any network environment (Hosted, distributed, or local network designs)
 - Any device or Application (Web, mobile, tablet, in-vehicle, video wall...)
 - Secure environment (Firewall, Restriction of Access, etc.)
 - Multiple data sources and integration layers
-



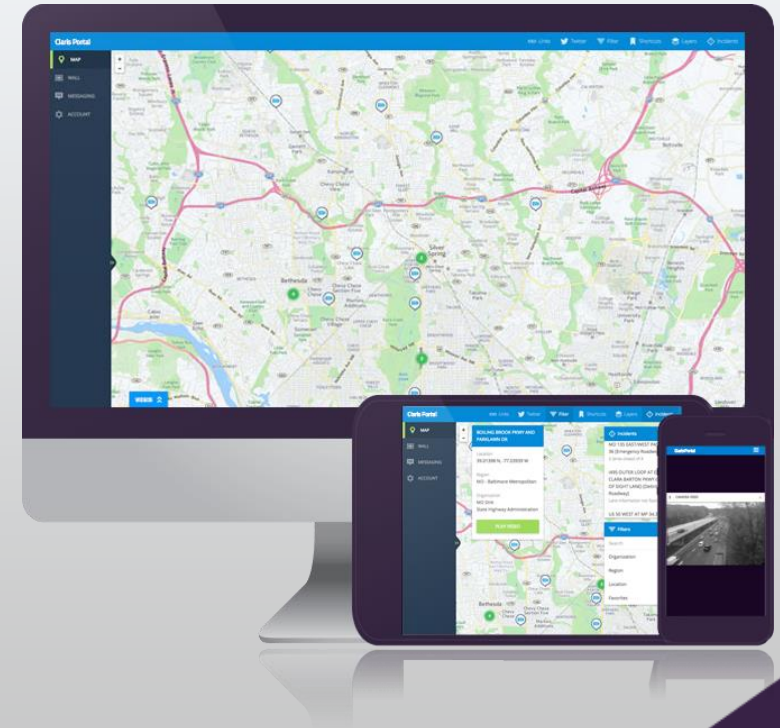
SmartView – High Level Architecture



SmartView Attributes

Access to video when and where its needed

- Capacity to efficiently, securely stream to large groups of consumers, partners
- Stream to any device
 - Web, mobile, in-vehicle, video wall delivery
- Partner friendly – share with who you want in minutes
- Flexible, scalable architecture
- Easily manage partner and public access
- Remote, secure access
- 24 x 7 NOC Support



SmartView



SmartView

Map

Incidents

Wall

Account

Admin

Logout



SmartView

Map

Incidents

Wall

Account

Admin

Logout

Organizations

Regions

Views

Chattanooga

Knoxville

Memphis

Nashville



SmartView

Map

Incidents

Wall

Account

Admin

Logout

Interstate 24 eastbound in Co...

State Route 155 eastbound in D...

Interstate 24 westbound in Ham...

Title: Interstate 24 westbound in Hamilton County

Type: Incident

Details:

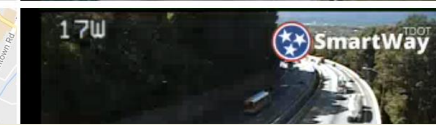
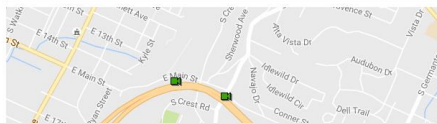
Interstate 24 westbound in Hamilton County - unscheduled utility work between EXIT 183A, BELVOIR AVE. / GERMANTOWN RD. and MILE MARKER 182 (Mile Marker: 182) reported at 9:35 AM 9/29/2016 and estimated to be cleared by 12:24 PM 9/29/2016 (Eastern Time Zone). Westbound traffic is affected with right lane blocked. Eastbound traffic is affected with no delays.

Coordinates: 35.9155844177252° N, -85.2532087034445° W

Time received: 9:35 AM 9/29/2016

County: Hamilton County

State Route 115 southbound in ...



What types of cameras can you share?



What types of agencies can leverage SmartView?

- Departments of Transportation - State, County, and City
- First Responders - State & Local Police, Fire Department, Federal
- Schools - K-12, College and Universities
- Public Locations
- Mass Transit Administrations - Stations, Vehicles
- Hospitals
- Port Authorities
- Stadium Authority
- Department of Natural Resources
- Departments of Public Works



Thank you.
Questions?

Brent Isenberg
bisenberg@skylinenet.net