



Expansion of the Western States One Stop Shop for Rural Traveler Information

Doug Galarus

Western Transportation Institute
Montana State University

Sean Campbell

Caltrans Division of Research,
Innovation, and System Information

Dan Richter

Western Transportation Institute
Montana State University

Ian Turnbull

Caltrans District 2

NRITS 2015

Session B1: Using Partnerships to Improve Traveler Information
Monday, August 10, 2015, 1:00 PM

Disclaimer

The opinions, findings and conclusions expressed in this presentation are those of the authors and not necessarily those of the Western States Rural Transportation Consortium, the California Department of Transportation, or Montana State University.

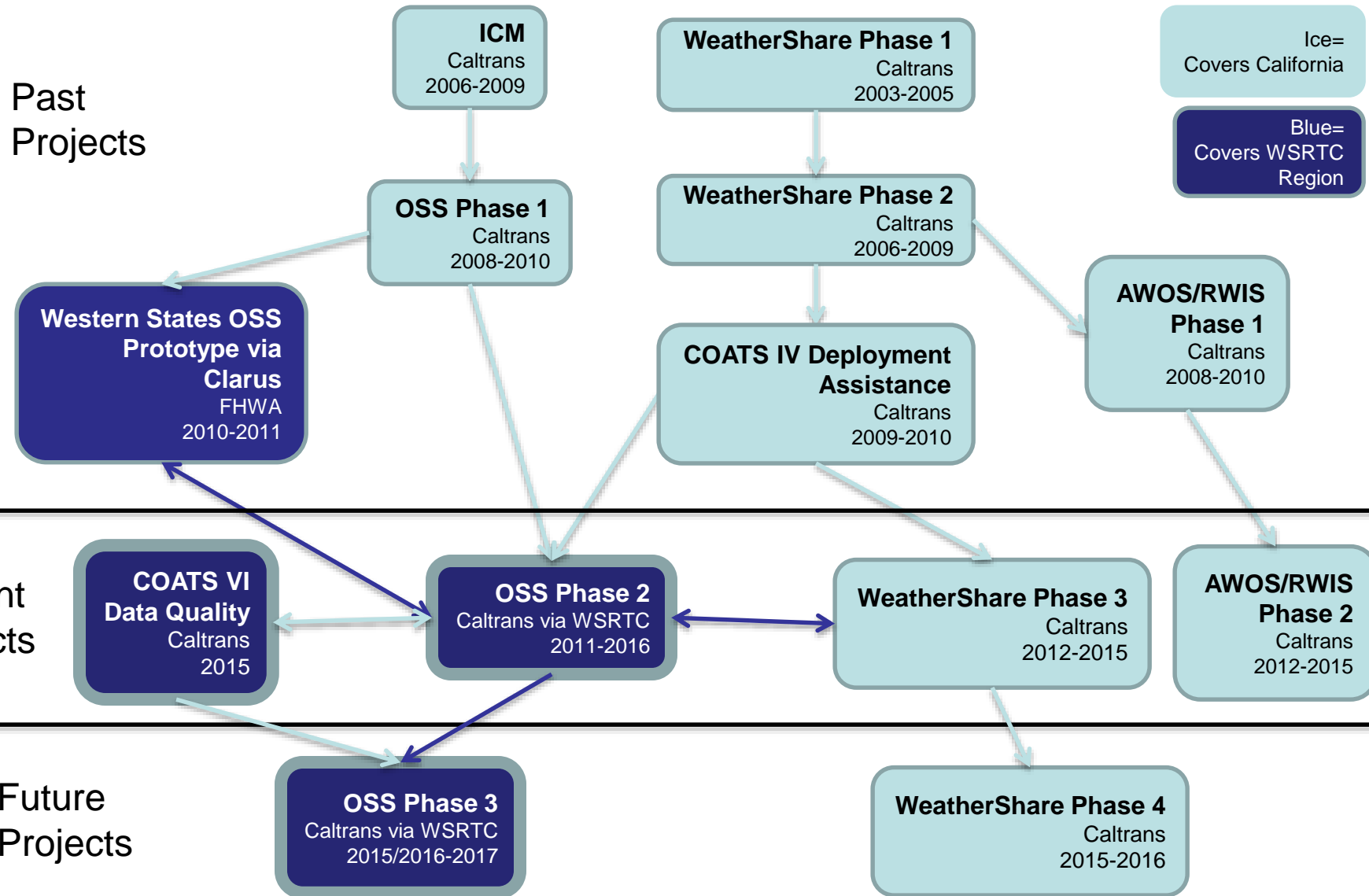
Abstract

The One-Stop-Shop (OSS) web application provides travelers with comprehensive, real-time data that can be used in planning their trips. OSS presents routing functionality, camera images, weather information, elevation profiles, rest areas, points of interest and more, in a consistent, easily accessible and intuitive interface that allows travelers to plan both instate trips and trips that cross state borders. In November 2014, OSS expanded coverage to include Idaho, Montana, Wyoming, Utah, Colorado, New Mexico and Arizona as well as California, Oregon, Washington and Nevada, which have been covered since 2011.

OSS was developed using a "best effort" approach to bring in data from multiple states and organizations, providing over 25 separate layers. States were not required to change their feeds for use in OSS, although they were encouraged to make data accessible online that otherwise was not available. Managing the import and presentation of this data via an intuitive and responsive interface presented various technical challenges to the project team, and the expansion to additional western states and beyond was taken into account when expanding the system.

In this presentation we will discuss the details of the expansion of the One-Stop-Shop, including usage information.

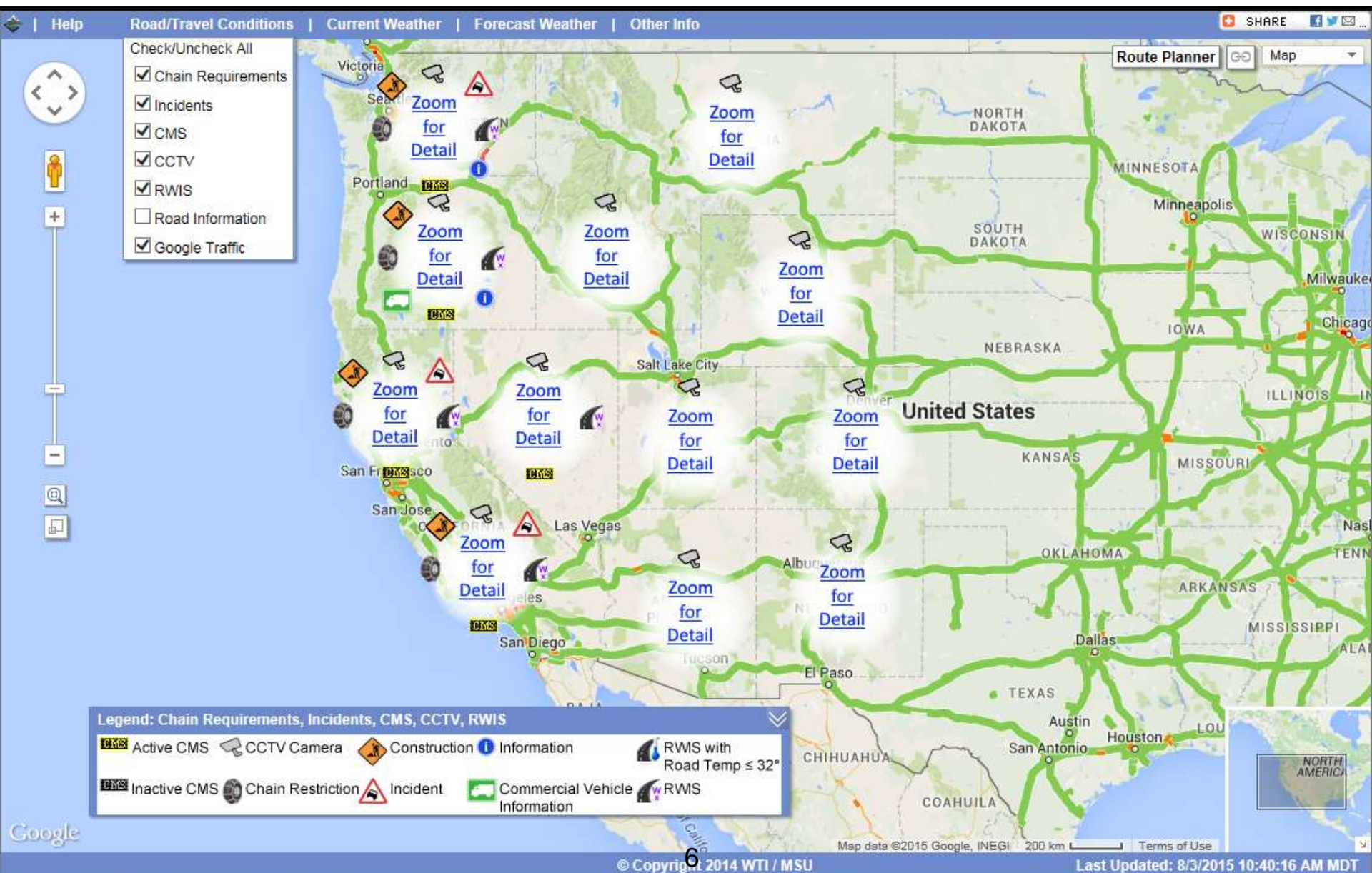
History: Closely Related Web-Based Efforts



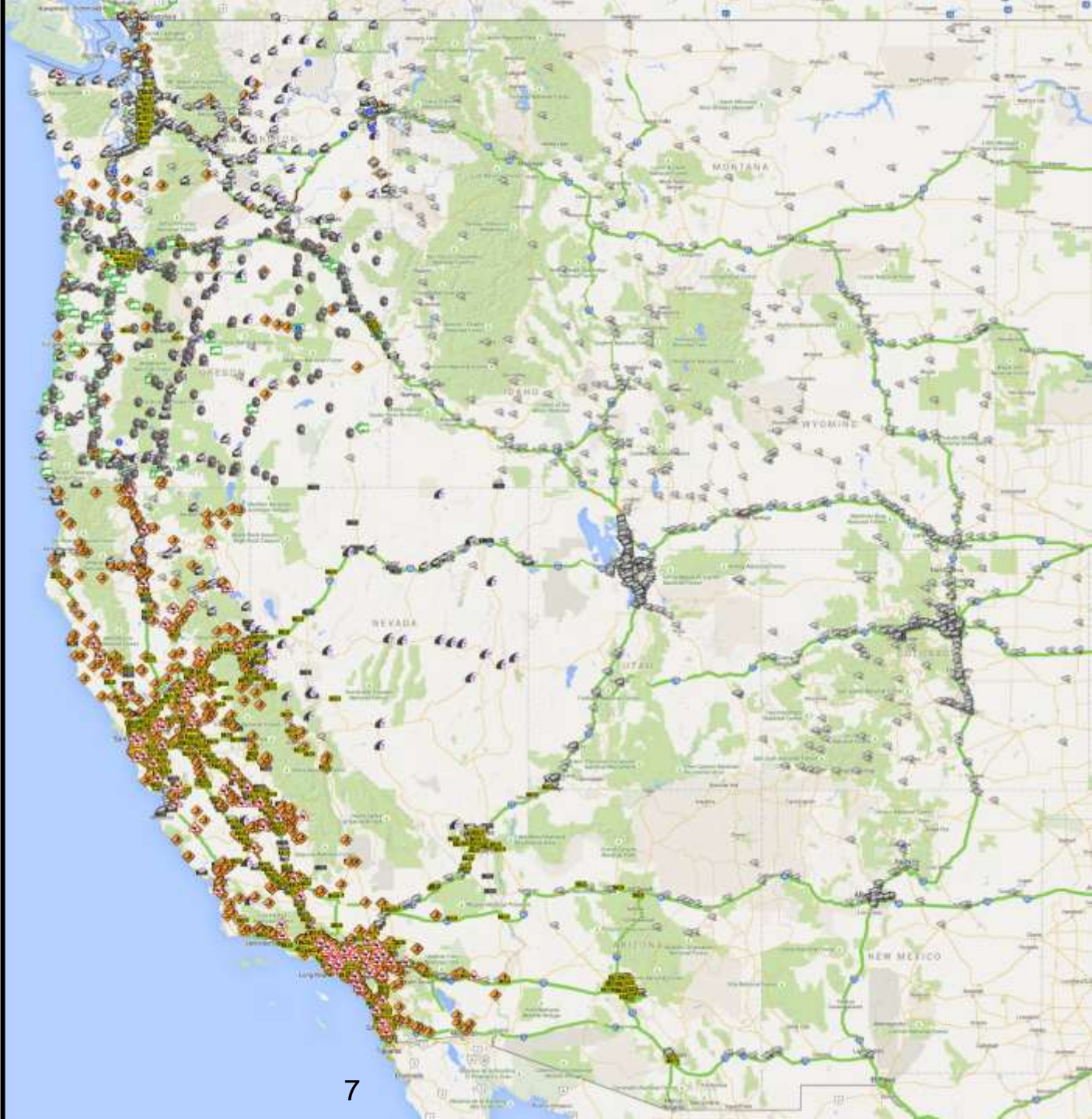
What is OSS?

A Pictorial Overview ...

<http://oss.weathershare.org/>



Thousands of
Field Elements
represented in
the Road /
Travel
Conditions
Layer Covering
11 States



Camera Images (2014-11-10)

Bozeman Pass - East



Source: Montana Department of Transportation

Bozeman Livingston

Georgetown Lake - North



Source: Montana Department of Transportation

National 90

Homestake Pass - East



Source: Montana Department of Transportation

Lookout Pass - West



Source: Montana Department of Transportation

Lookout Pass



Source: Idaho Transportation Department

Bowmans



Source: Montana Department of Transportation

Camera Images (2014-11-10)

Reedpoint



Source: Montana Department of Transportation

Karst



Source: Montana Department of Transportation

Chief Joseph



Source: Wyoming Department of Transportation

Wind River Canyon



Source: Wyoming Department of Transportation

Wind River Lake



Source: Wyoming Department of Transportation

Riverton

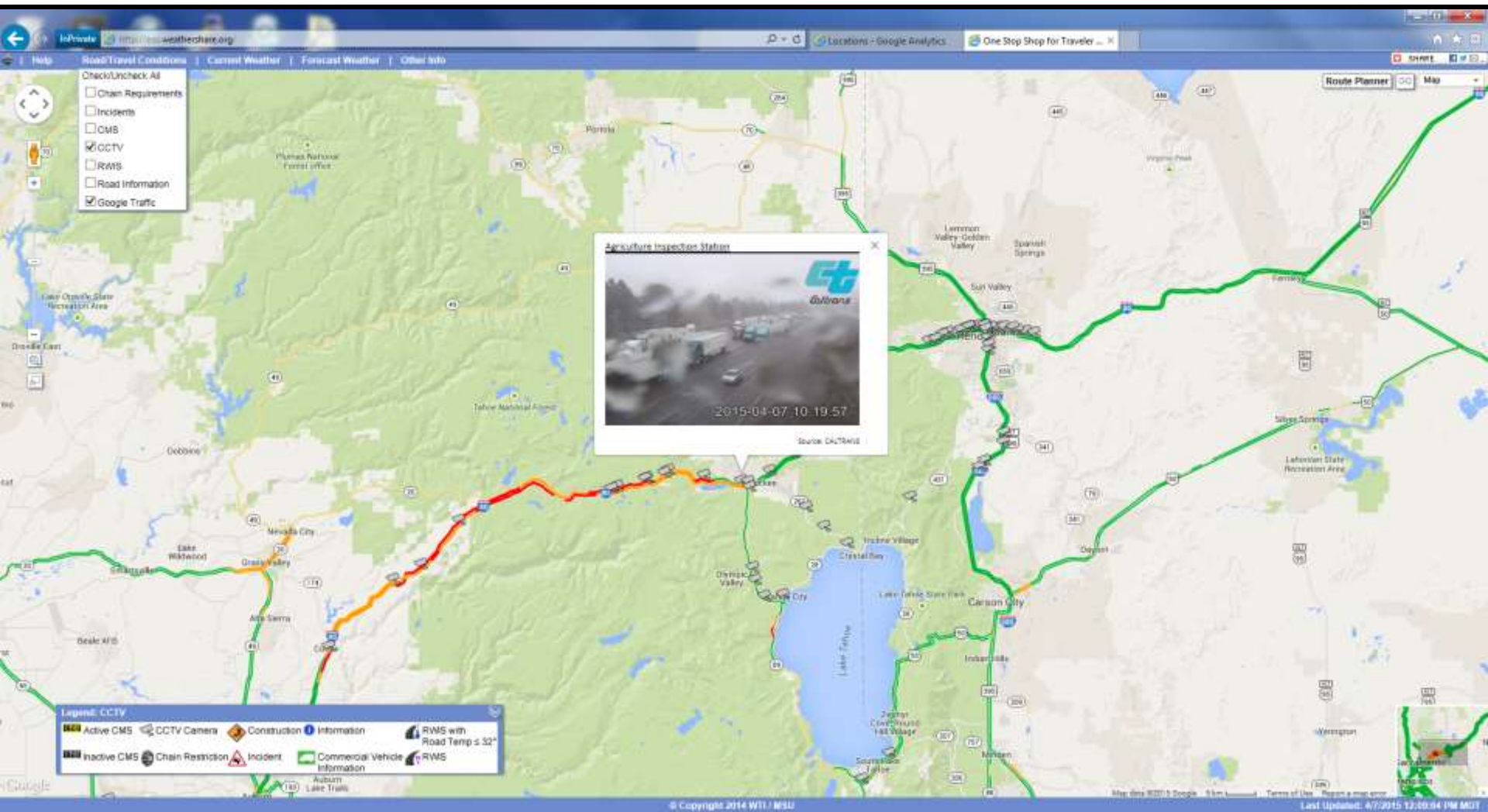


Source: Wyoming Department of Transportation

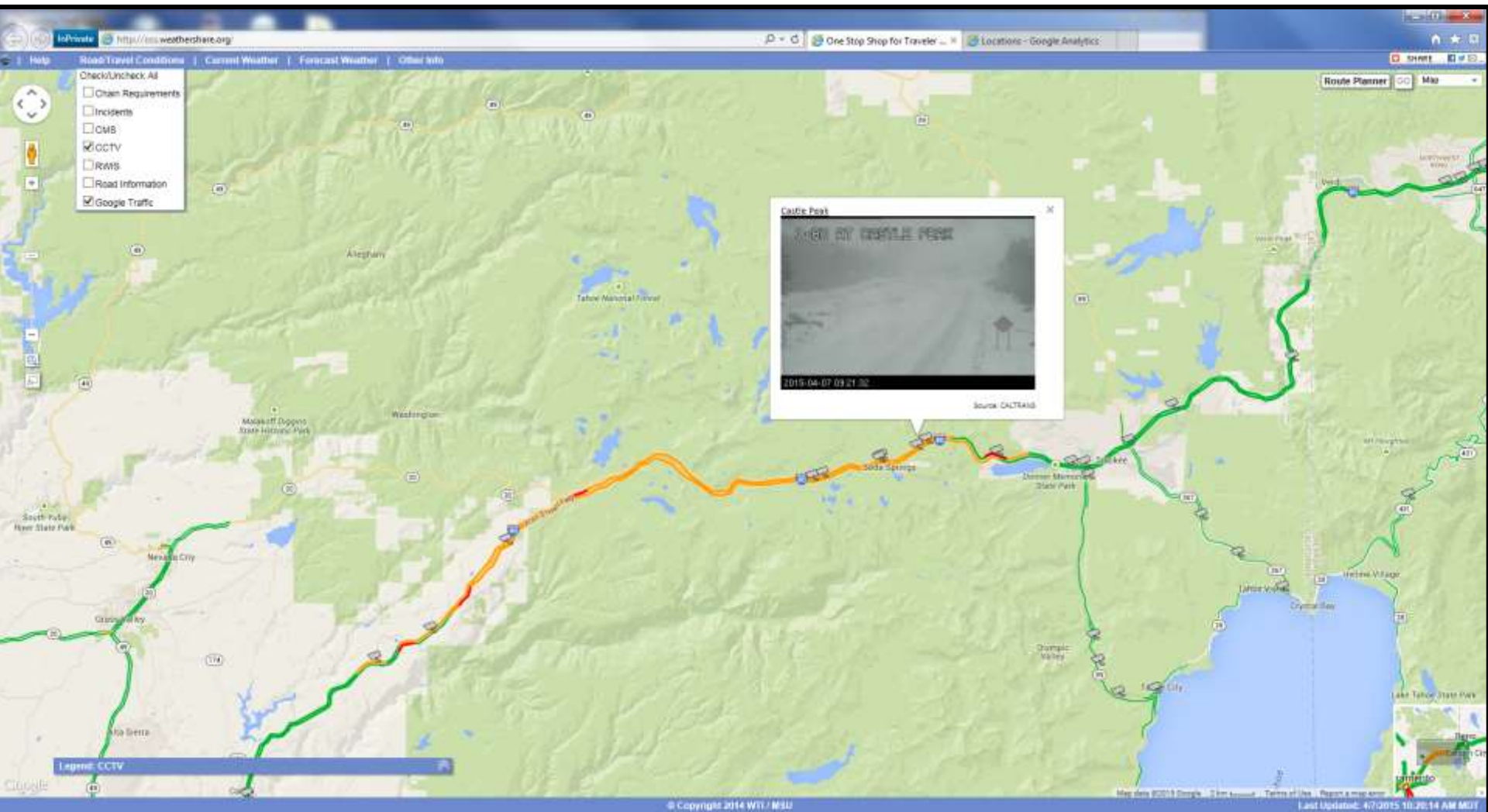
Camera Images (2014-11-10)



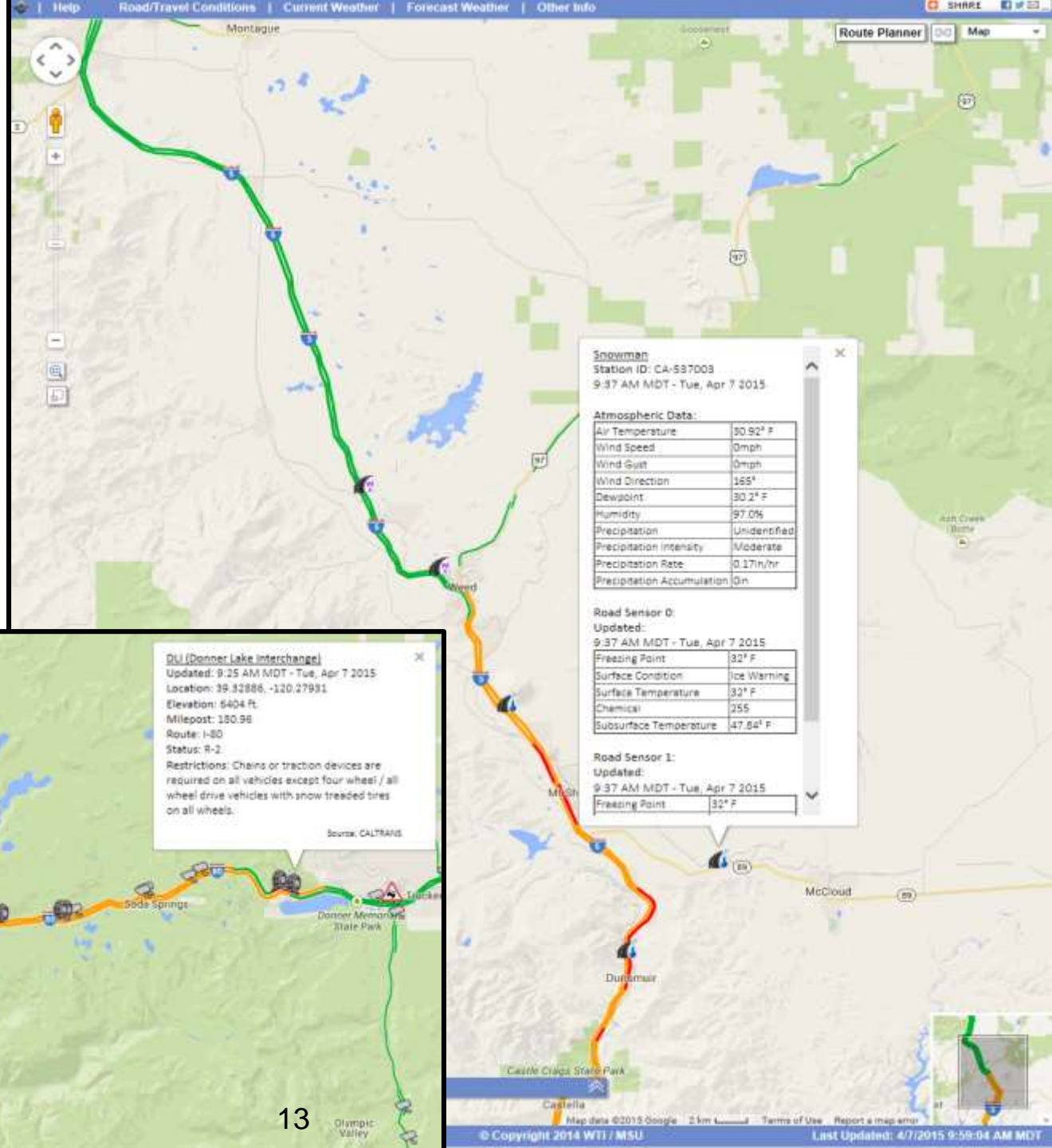
Google Traffic



Google Traffic

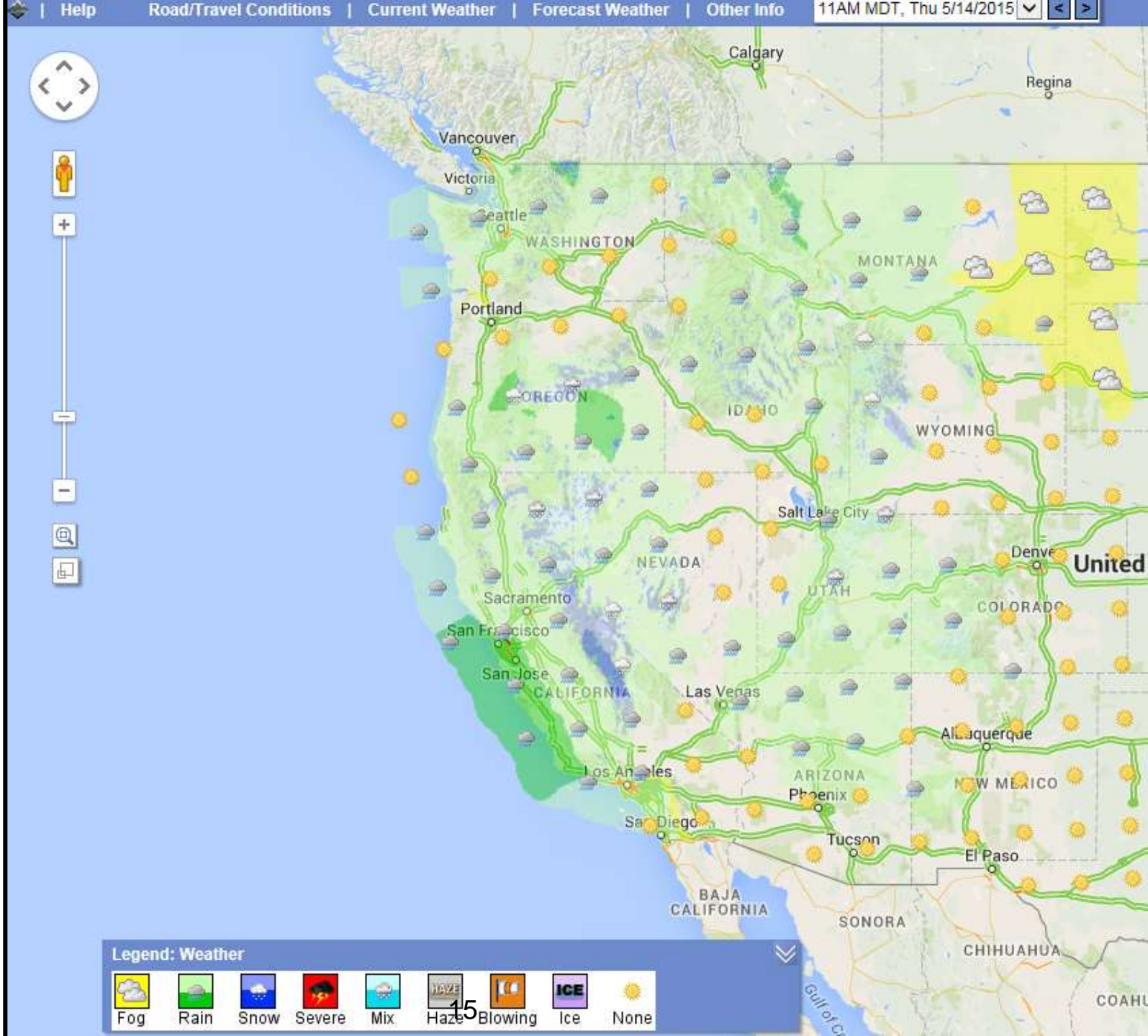


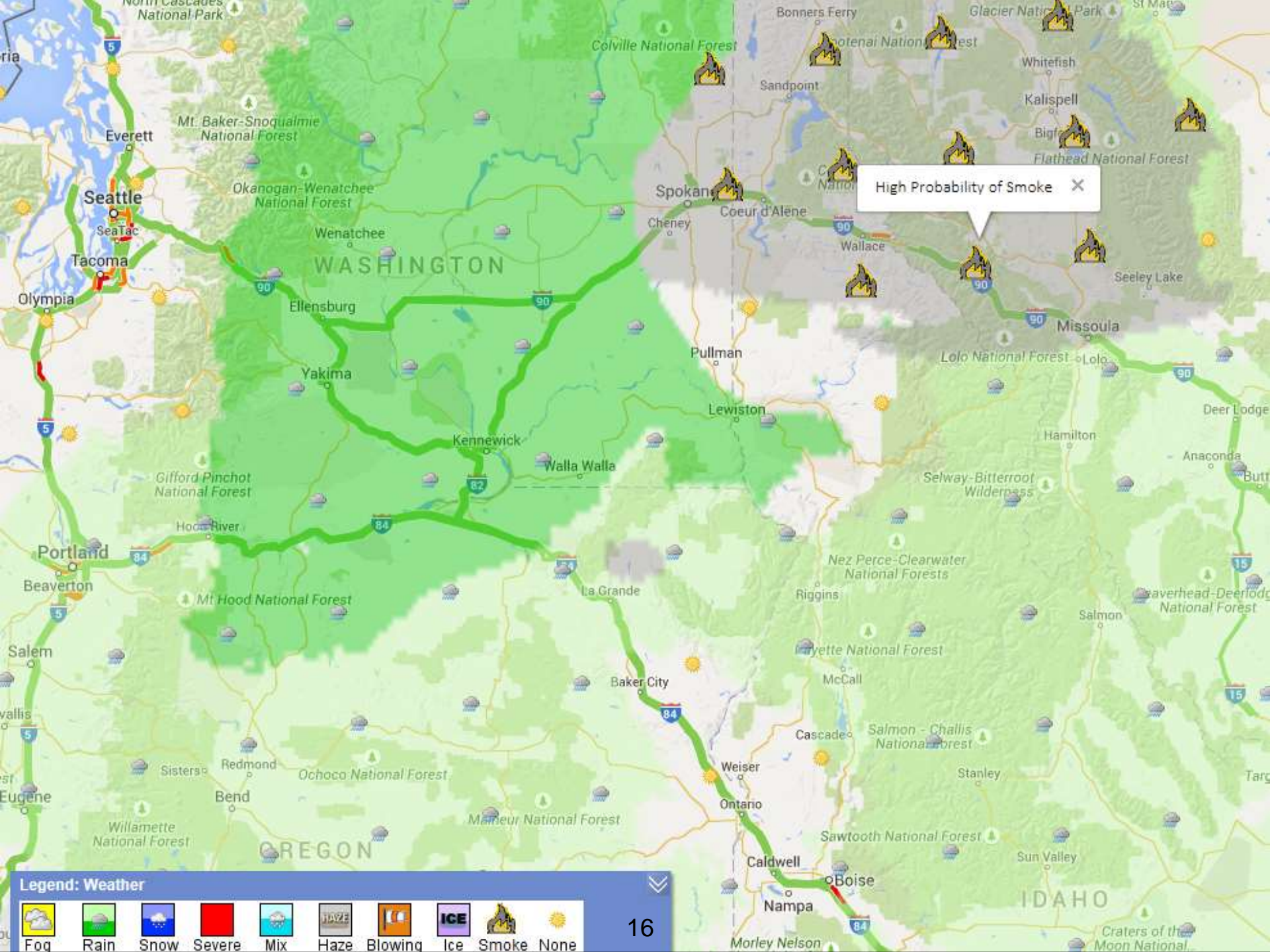
Chain Requirements and RWIS Data



Red Bruff

Weather Forecasts

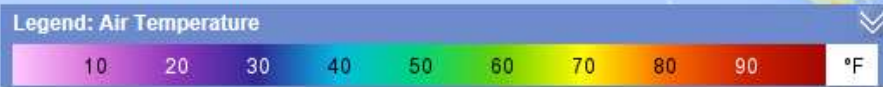
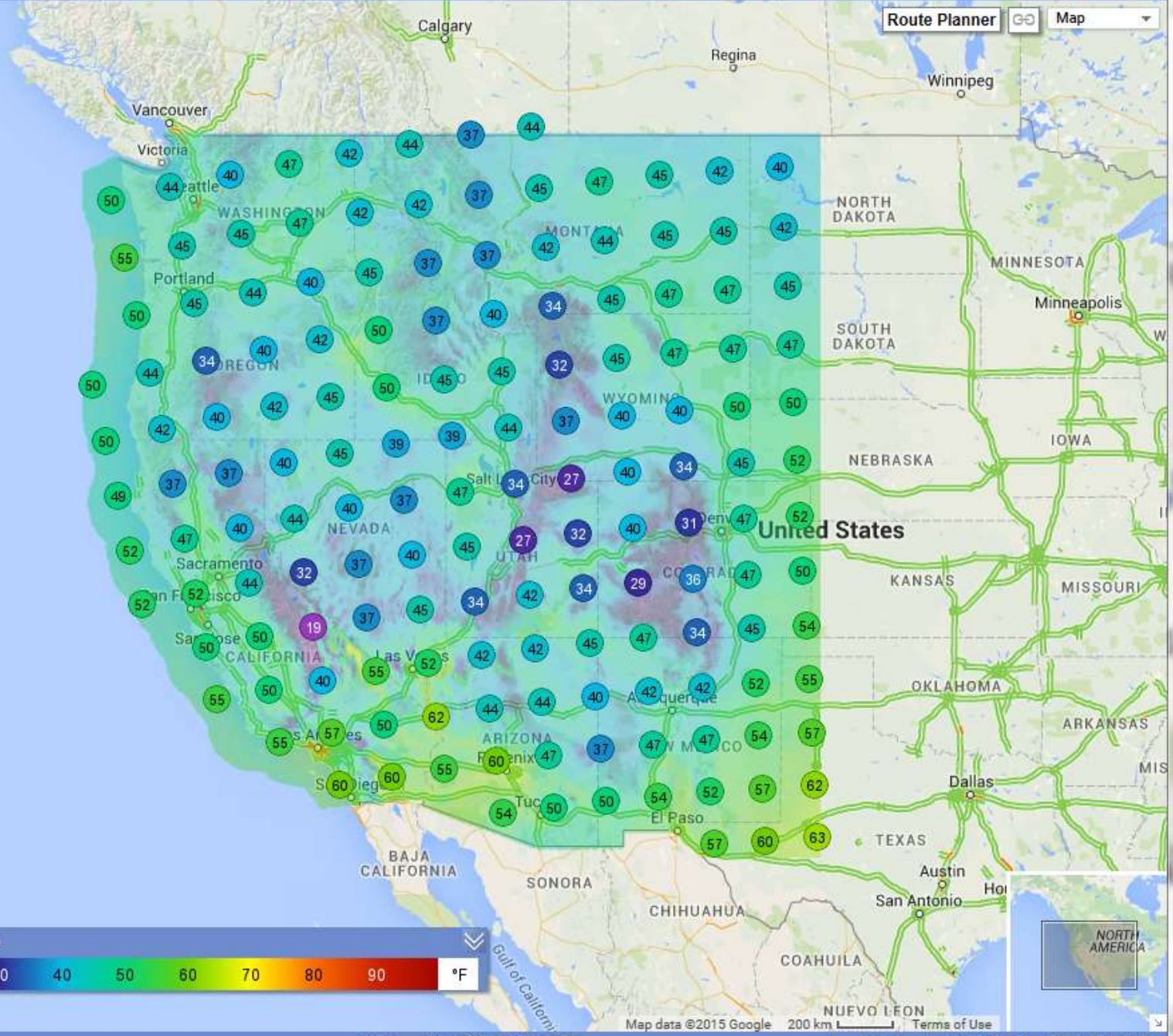




High Probability of Smoke X

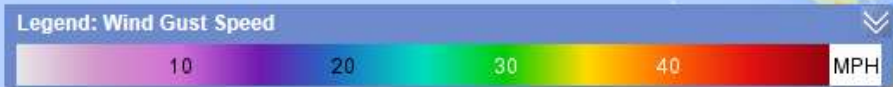
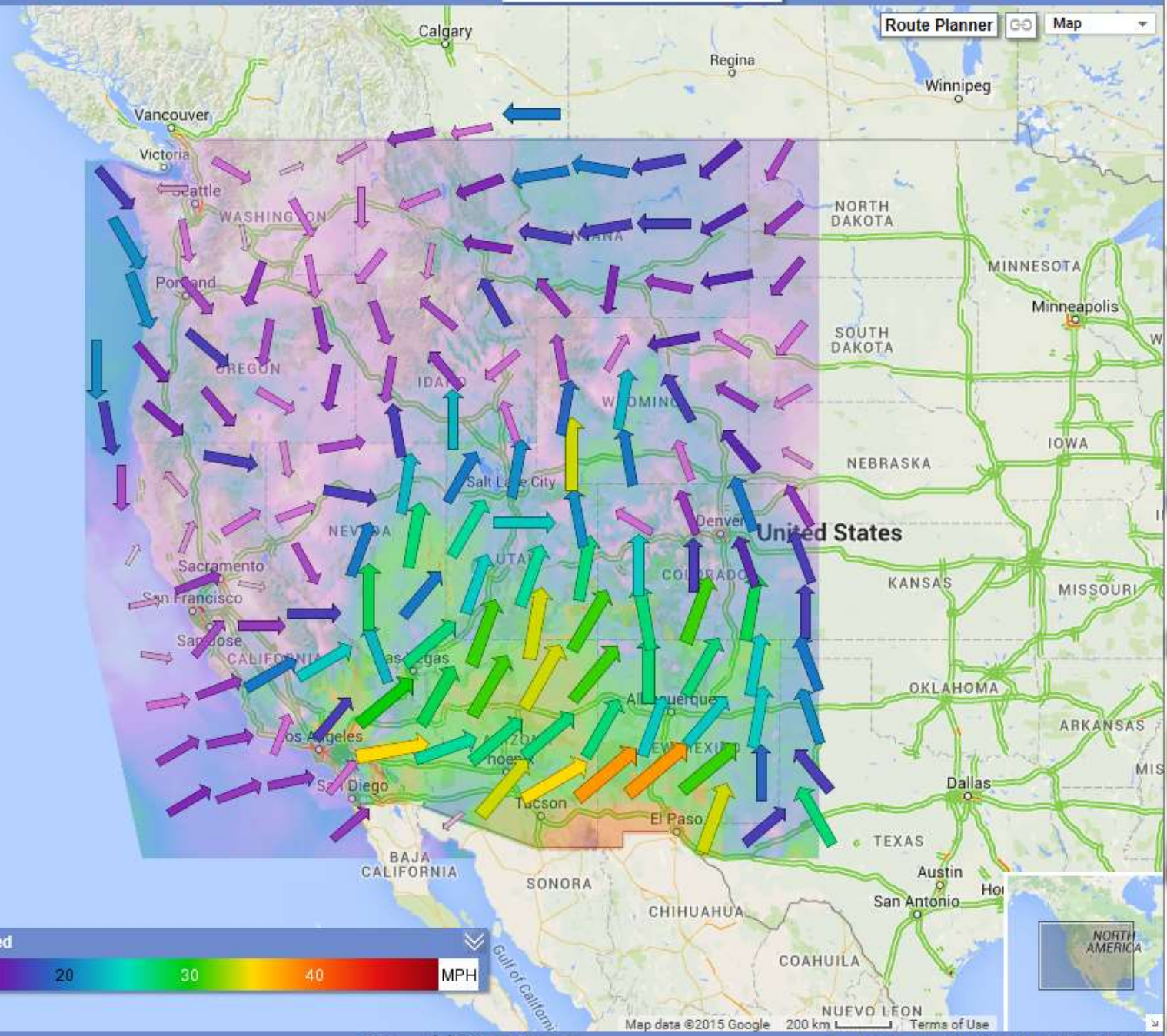
Legend: Weather

- Fog
- Rain
- Snow
- Severe
- Mix
- Haze
- Blowing
- Ice
- Smoke
- None





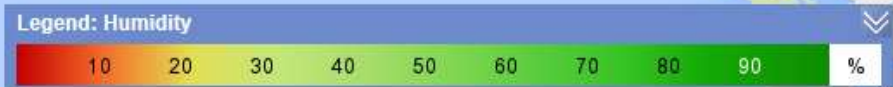
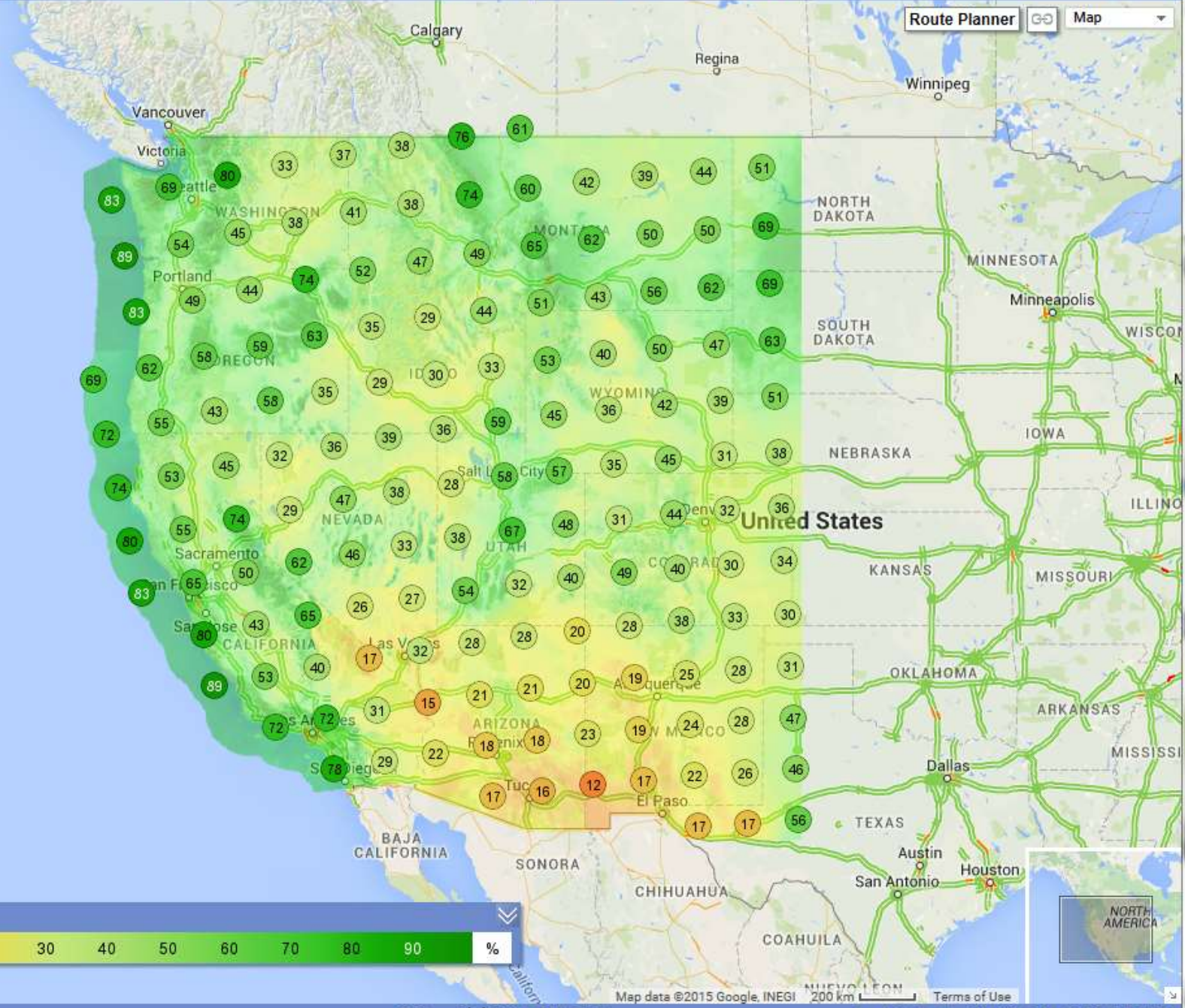
Route Planner Map



Google



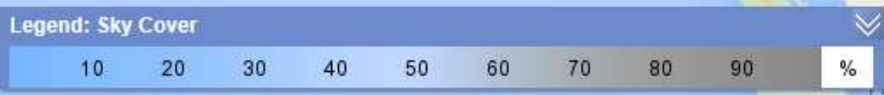
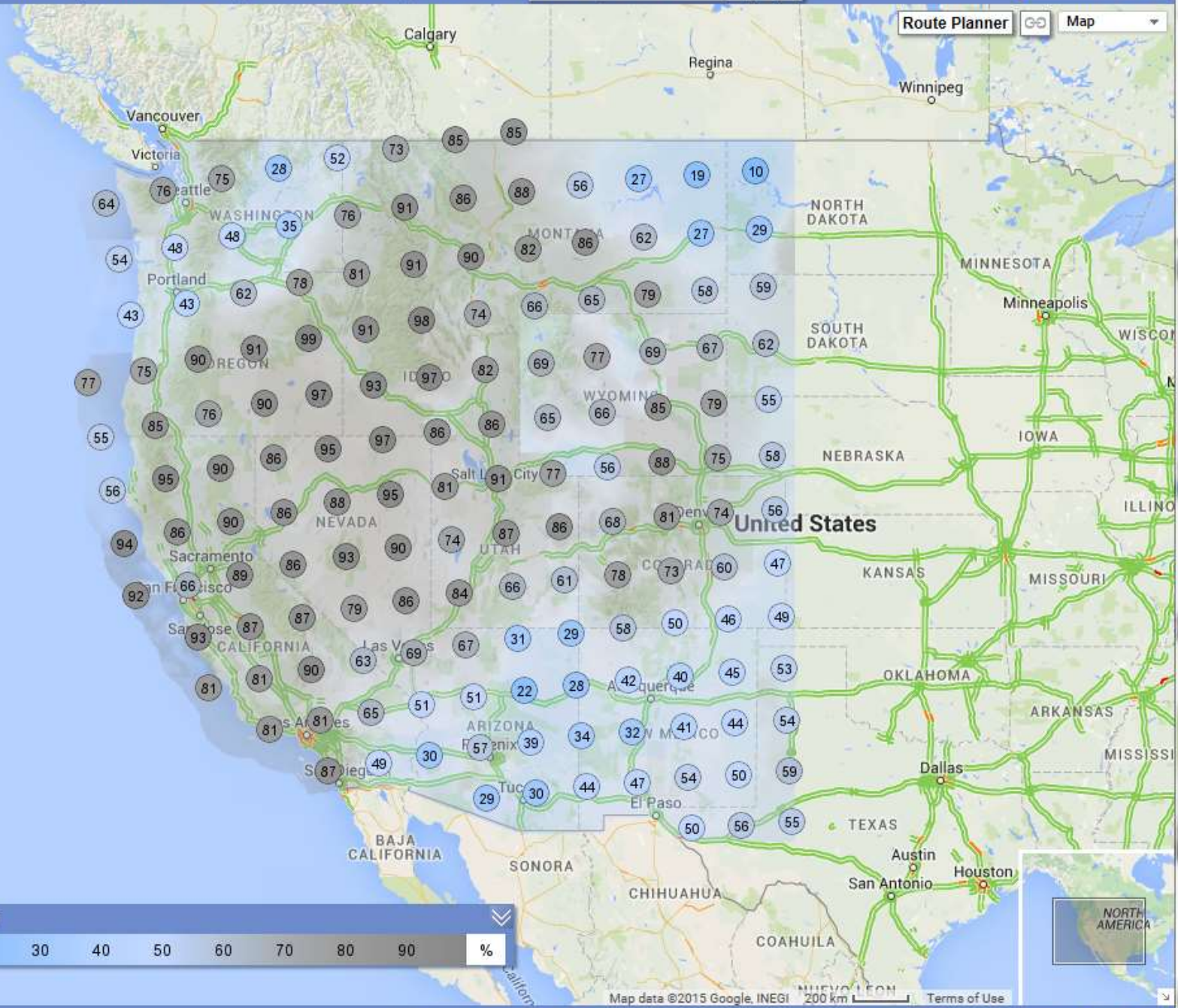
Route Planner Map



Google



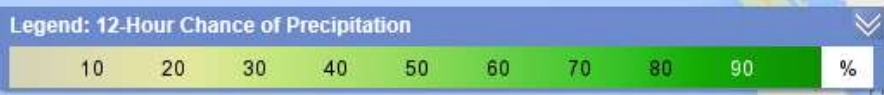
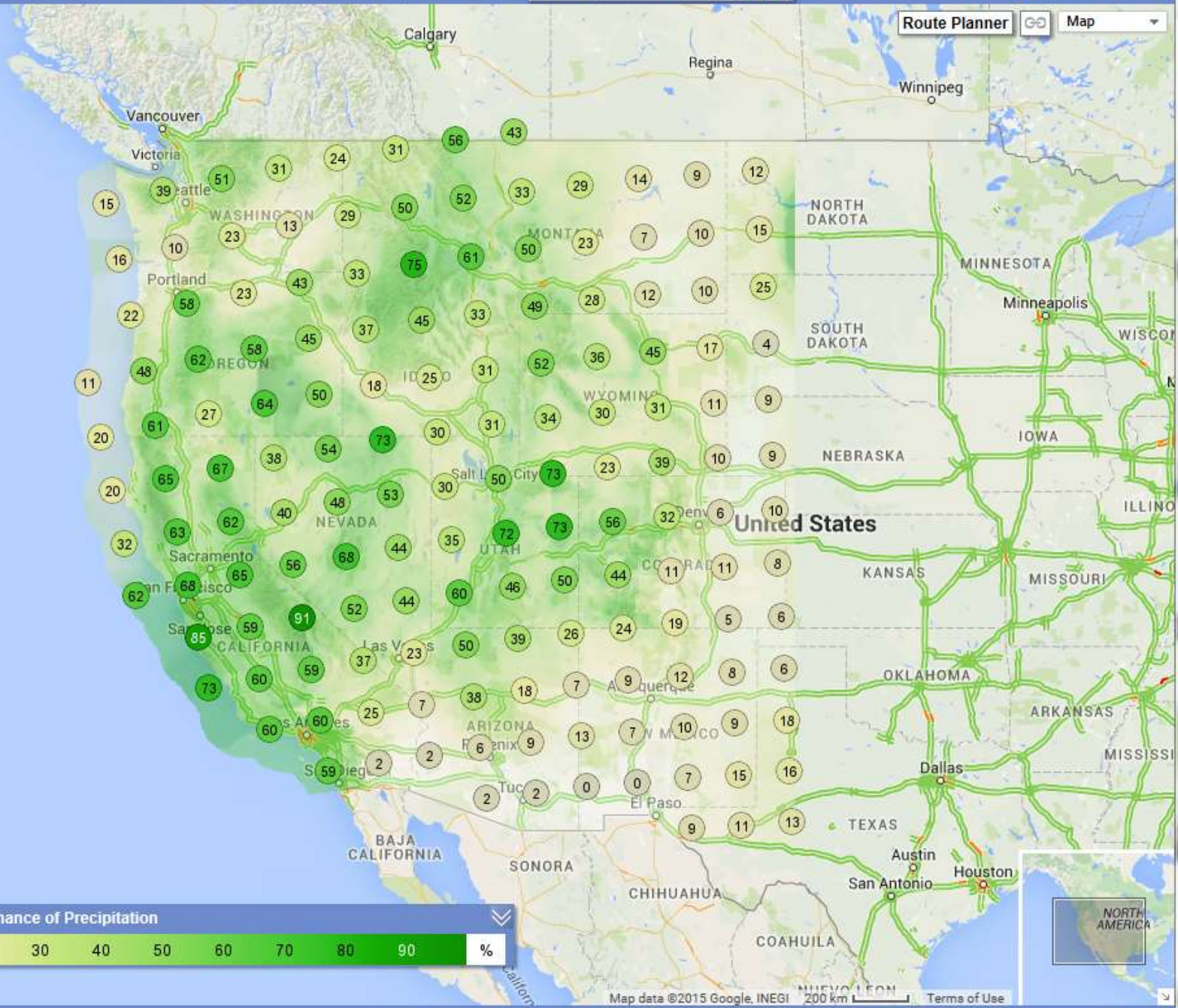
Route Planner Map



Google

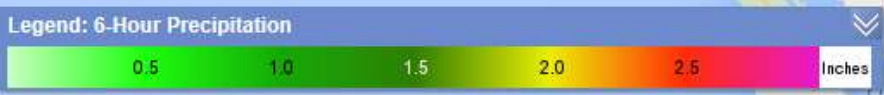
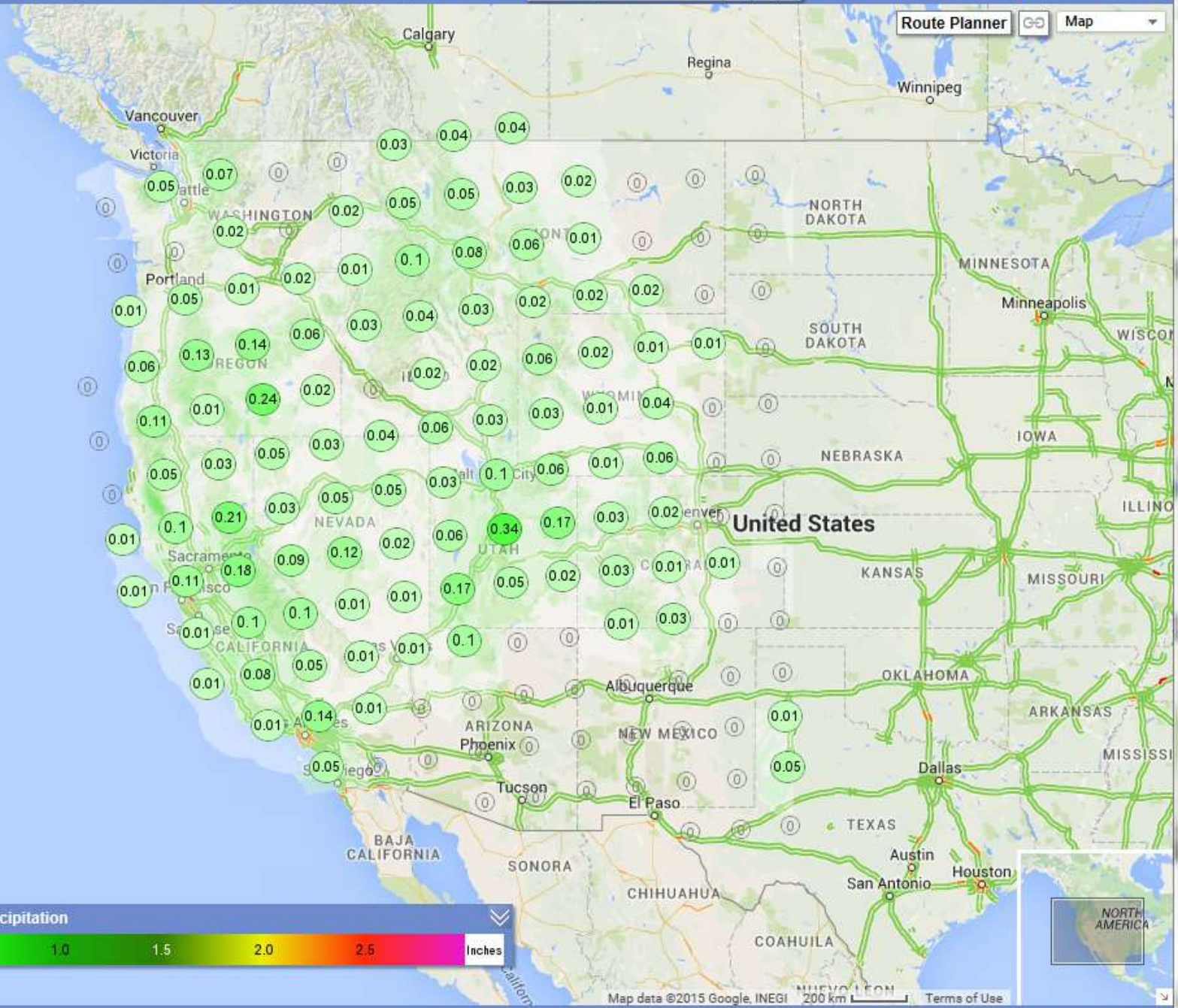


Route Planner Map

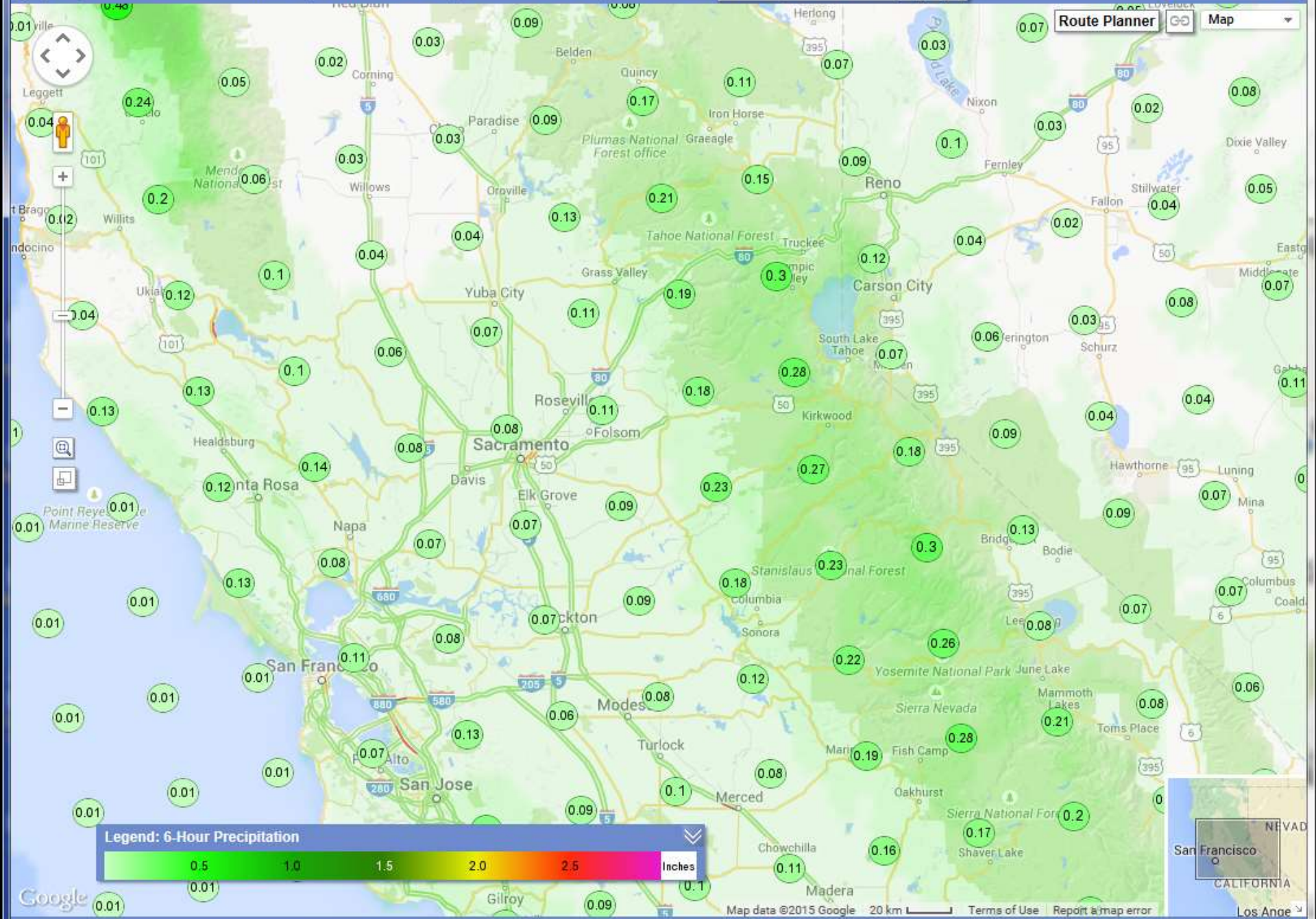




Route Planner | Map

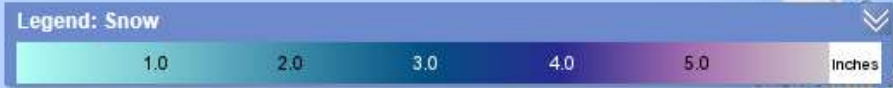
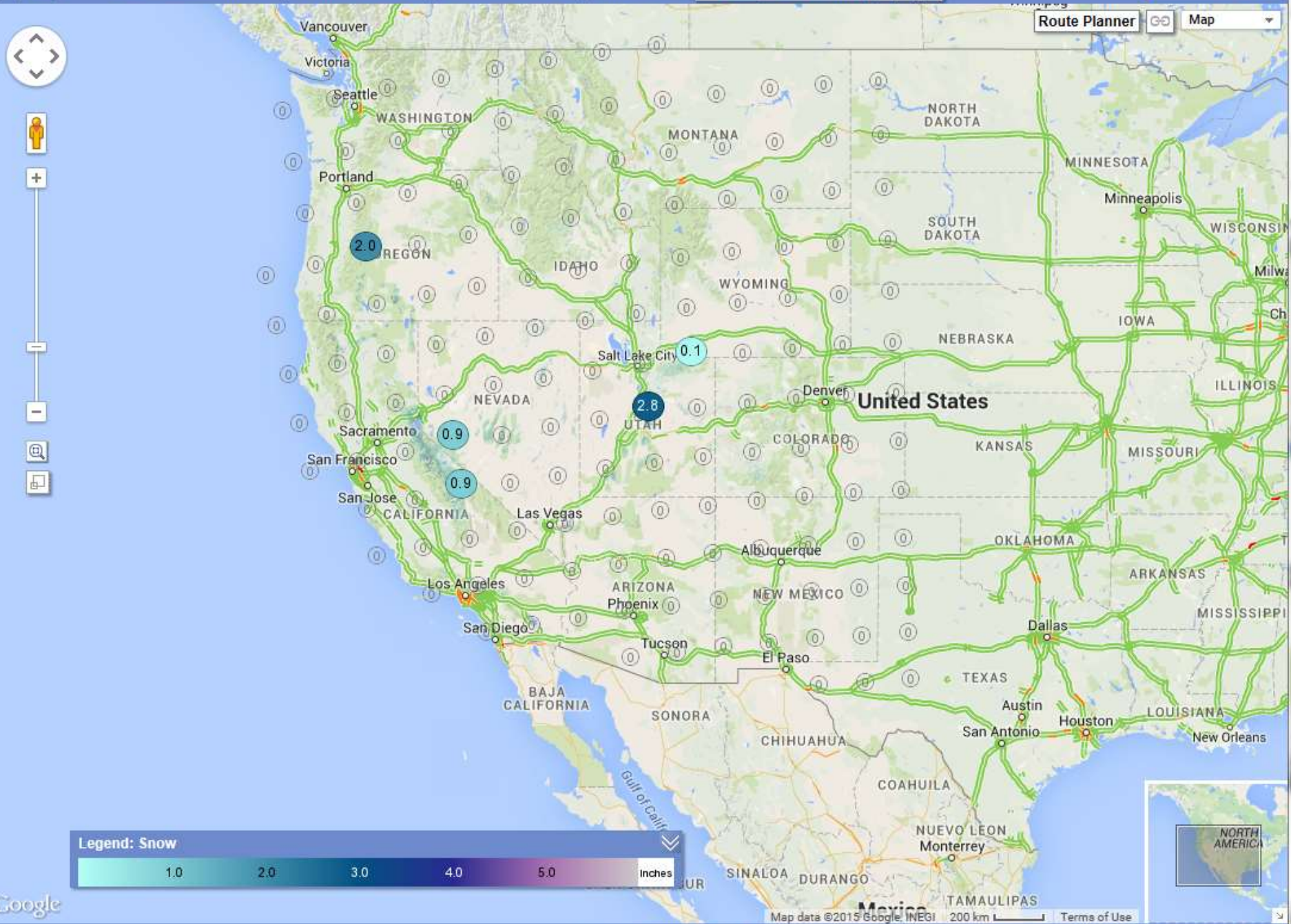


Google

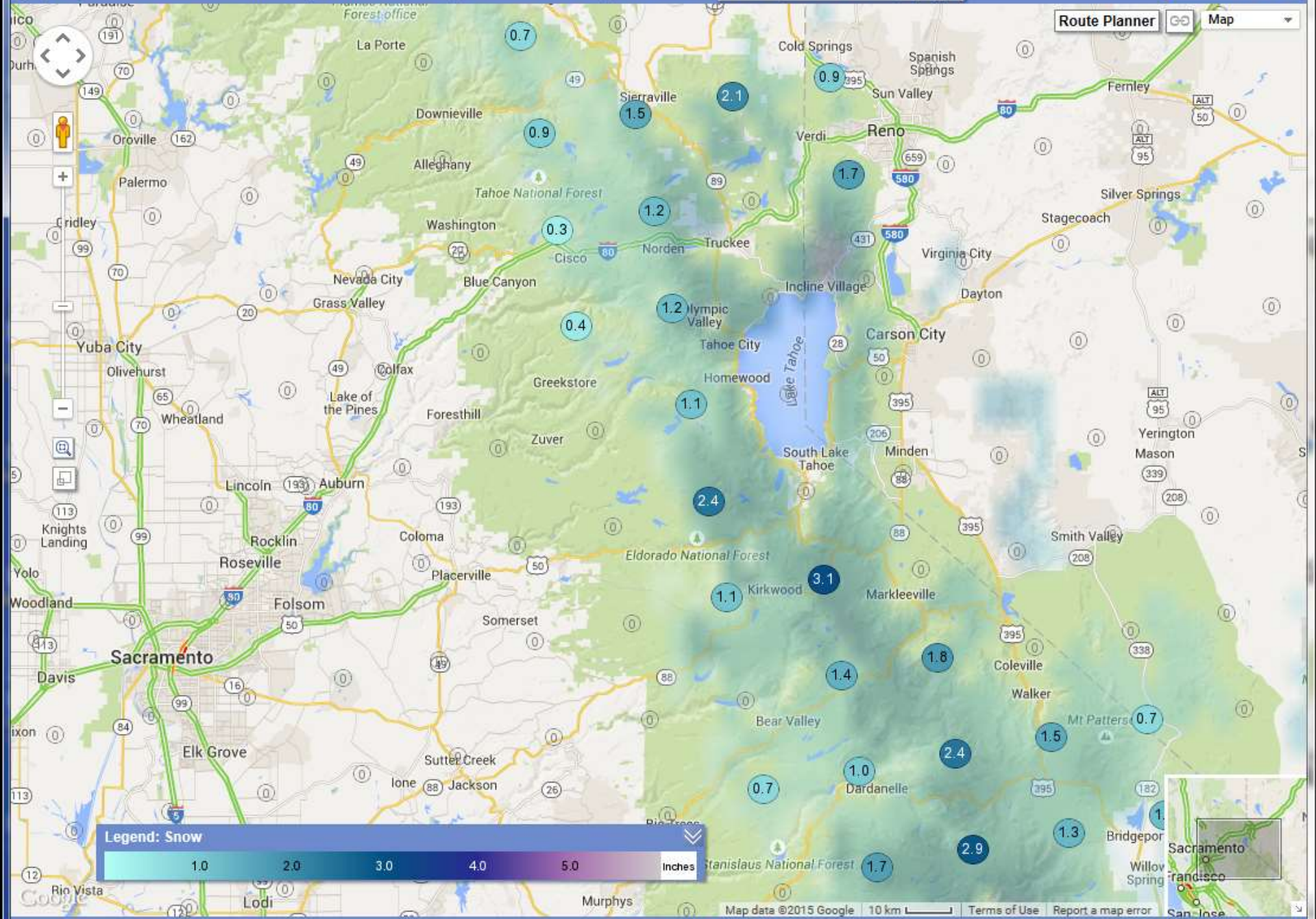




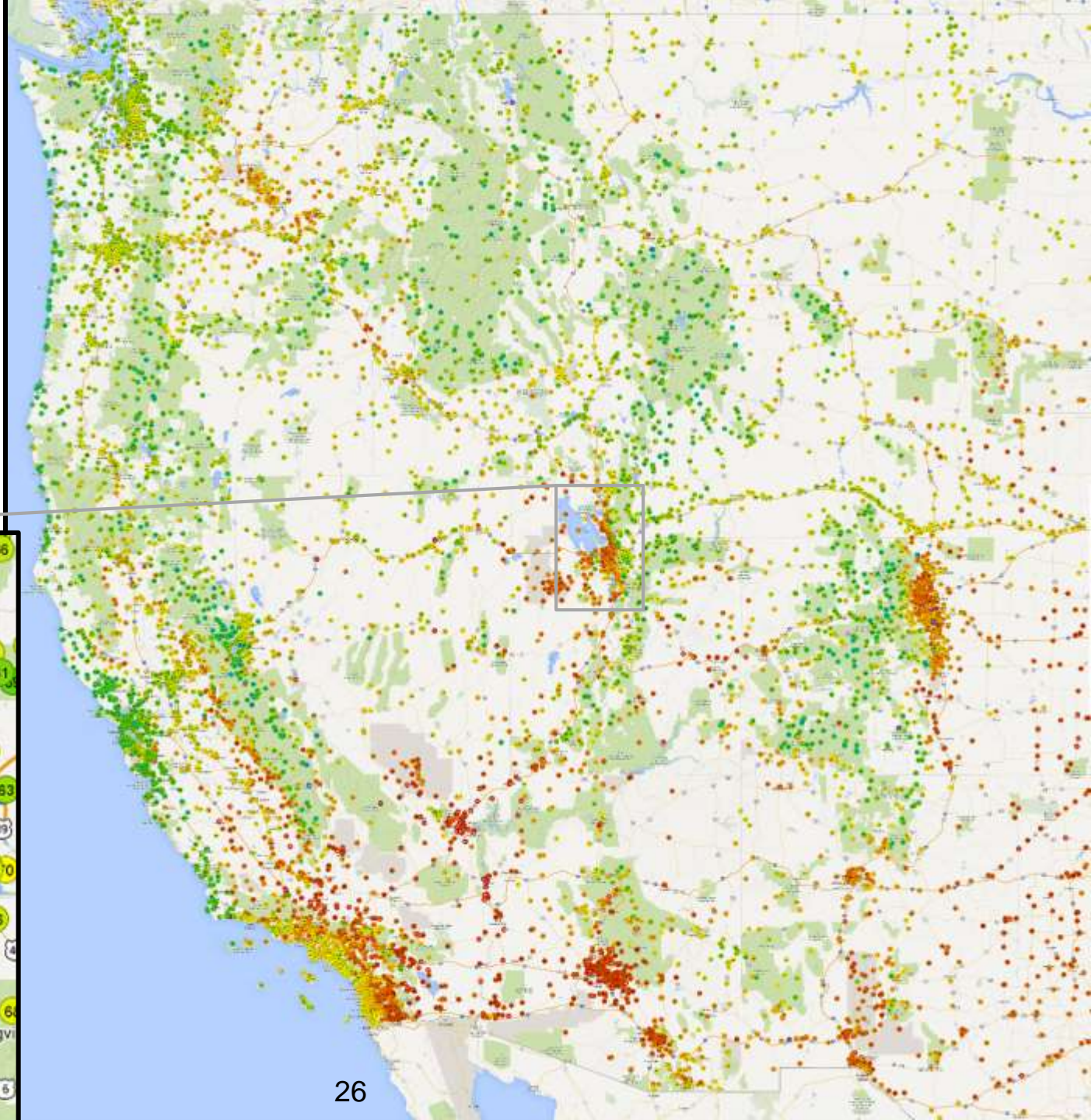
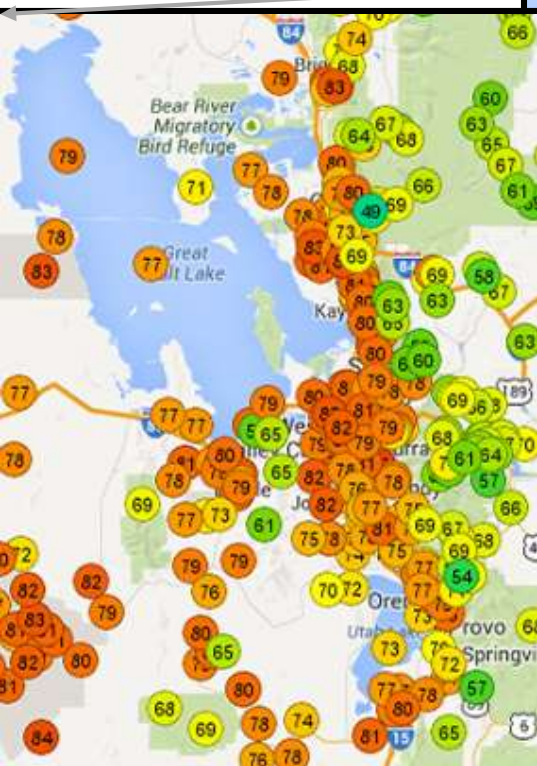
Route Planner | Map



Google



Thousands of Weather Observations



The Layers

Current Weather

Air Temperature
Relative Humidity
1 Hour Precipitation
24 Hour Precipitation
AHPS 24 hr Precip.
Wind

Other Info

Rest Areas
Features of Interest
Truck Scales
Summit Locations

Road/Travel Conditions

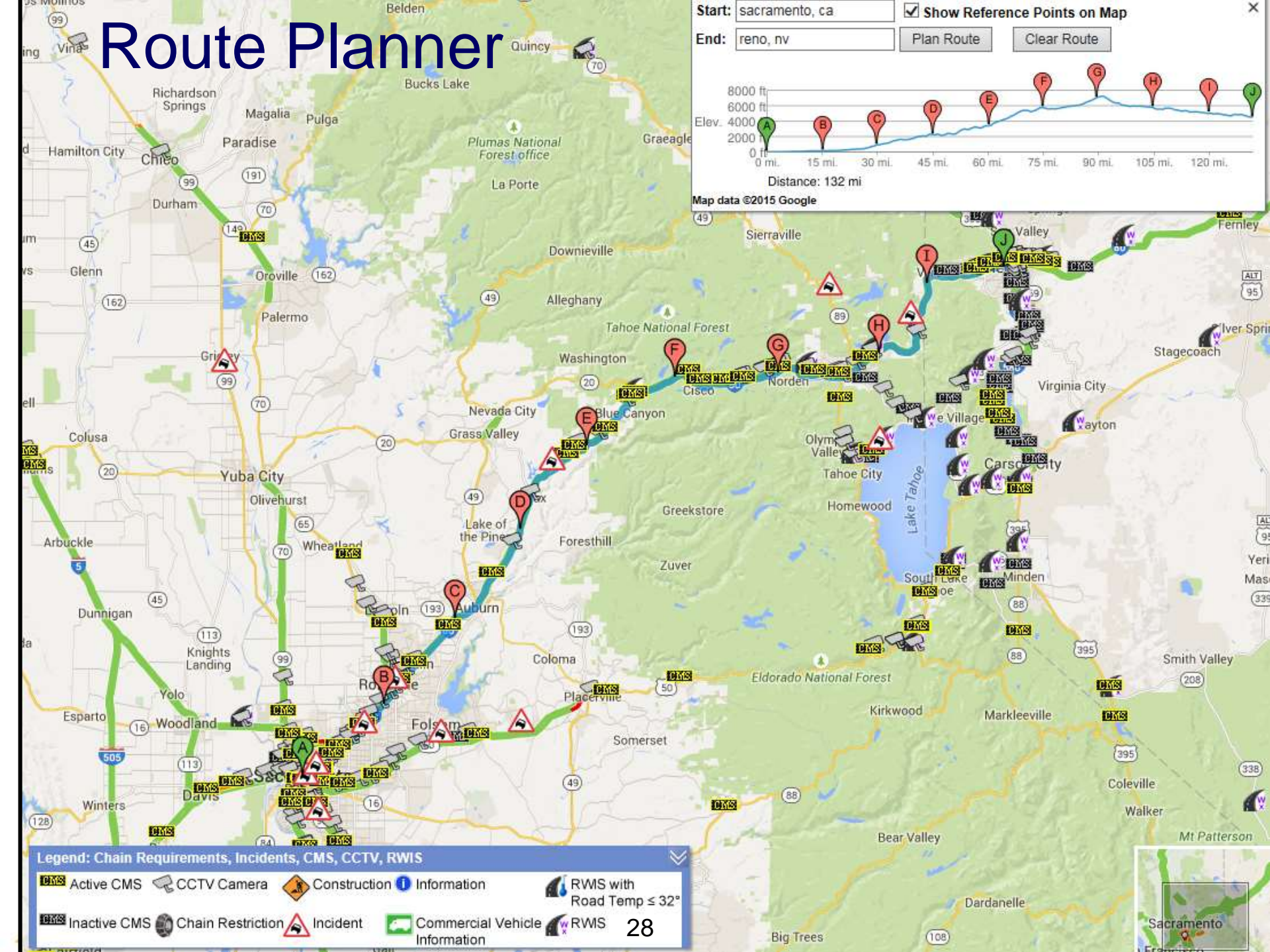
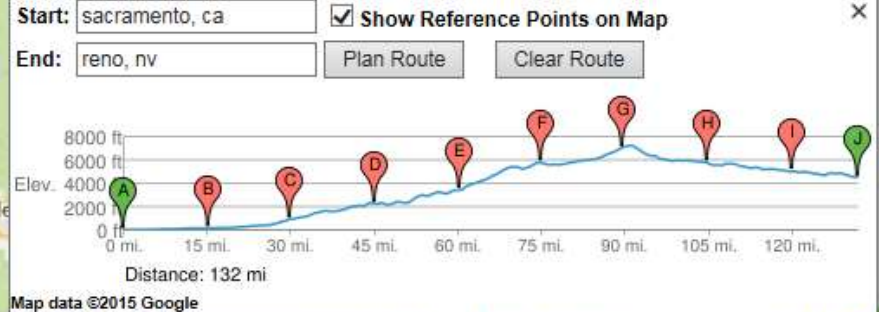
Check/Uncheck All

- ☒ Chain Requirements
- ☒ Incidents
- ☒ CMS
- ☒ CCTV
- ☒ RWIS
- ☐ Road Information
- ☒ Google Traffic

Forecast Weather

Air Temperature
Wind Speed
Wind Gust Speed
Humidity
Sky Cover
12-Hour Chance of Precipitation
6-Hour Precipitation
Snow
Weather

Route Planner



Expansion and Related Efforts

- *Summer 2014: The OSS team began experimenting with expanded coverage for weather conditions and forecasts.*
- *Summer 2014: Sean Campbell began work on feeds for CCTV and CMS from additional states.*
- *September 2014: The OSS team implemented mouse-over viewing of cameras and other data.*
- *September 2014: Caltrans (Sean Campbell) added links to OSS from the Caltrans camera/video page.*
- *November 2014: The OSS team expanded coverage from four states to eleven states.*
- *November 2014: An MSU press release is picked up by local (Montana) news and other regional sources.*

User Sessions

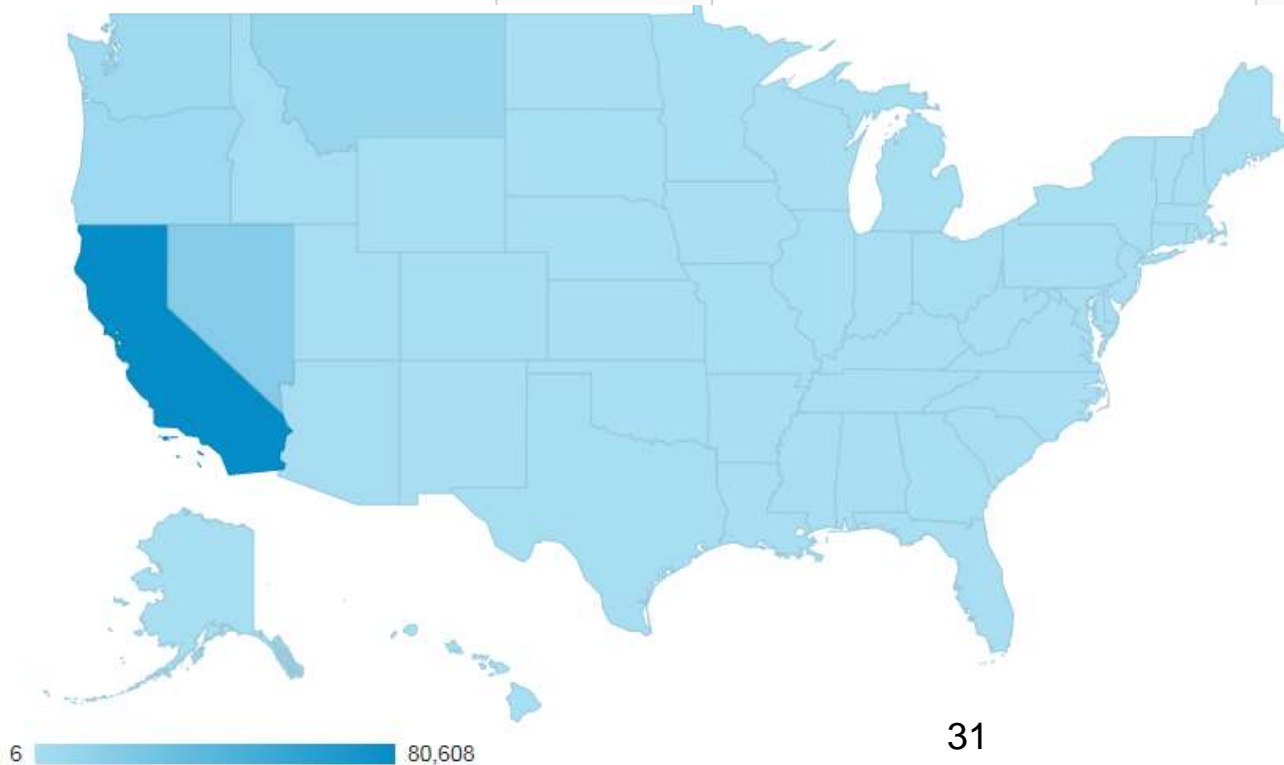
A session is a user visit to the site.



1.	California	80,608 (59.26%)
2.	Nevada	18,664 (13.72%)
3.	Montana	8,671 (6.37%)
4.	Oregon	6,191 (4.55%)
5.	Washington	4,874 (3.58%)
6.	Arizona	1,773 (1.30%)
7.	Idaho	1,580 (1.16%)
8.	Colorado	1,409 (1.04%)
9.	Texas	1,344 (0.99%)
10.	Ohio	924 (0.68%)

11.	Utah	867 (0.64%)
12.	Iowa	586 (0.43%)
13.	Florida	554 (0.41%)
14.	Wyoming	487 (0.36%)
15.	Illinois	468 (0.34%)
16.	Minnesota	429 (0.32%)
17.	Hawaii	421 (0.31%)
18.	Oklahoma	371 (0.27%)
19.	South Dakota	337 (0.25%)
20.	Missouri	327 (0.24%)

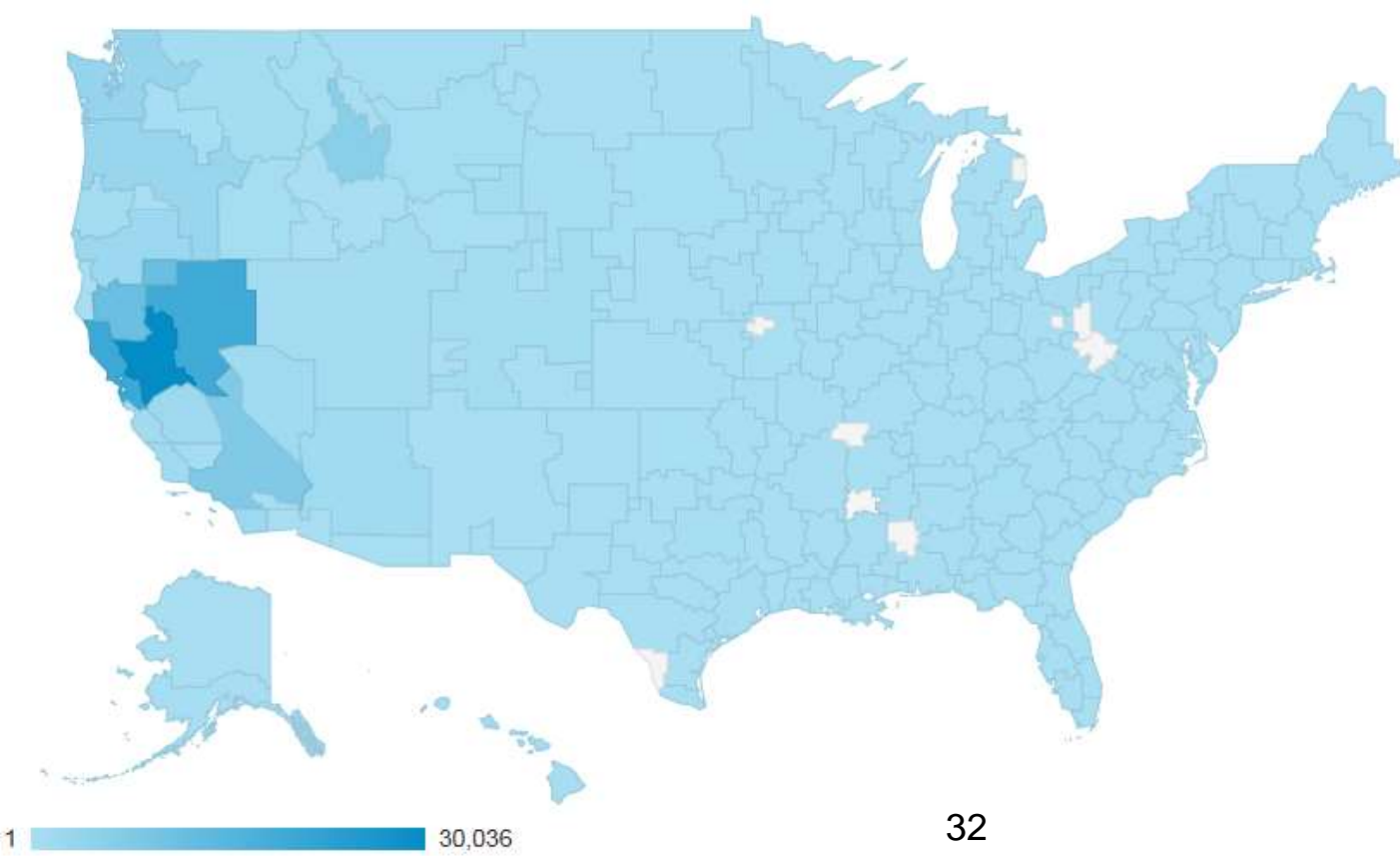
21.	Nebraska	325 (0.24%)
22.	Alaska	321 (0.24%)
23.	New York	317 (0.23%)
24.	Michigan	299 (0.22%)
25.	Connecticut	294 (0.22%)
26.	Pennsylvania	276 (0.20%)
27.	Georgia	273 (0.20%)
28.	(not set)	253 (0.19%)
29.	Virginia	248 (0.18%)
30.	New Mexico	246 (0.18%)
31.	Maryland	223 (0.16%)
32.	North Carolina	219 (0.16%)
33.	Tennessee	212 (0.16%)
34.	New Jersey	157 (0.12%)
35.	Massachusetts	149 (0.11%)
36.	Wisconsin	145 (0.11%)
37.	Kentucky	144 (0.11%)
38.	Kansas	140 (0.10%)
39.	District of Columbia	123 (0.09%)
40.	Arkansas	120 (0.09%)
41.	Mississippi	116 (0.09%)
42.	Indiana	113 (0.08%)
43.	Louisiana	107 (0.08%)
44.	(not set)	83 (0.06%)
45.	South Carolina	48 (0.04%)
46.	Alabama	47 (0.03%)
47.	Delaware	33 (0.02%)
48.	North Dakota	31 (0.02%)
49.	West Virginia	27 (0.02%)
50.	Maine	21 (0.02%)
51.	New Hampshire	15 (0.01%)
52.	Vermont	12 (0.01%)
53.	Rhode Island	6 (0.00%)



1.	Sacramento-Stockton-Modesto CA	30,036 (22.08%)
2.	San Francisco-Oakland-San Jose CA	19,963 (14.68%)
3.	Reno NV	19,115 (14.05%)
4.	Chico-Redding CA	11,551 (8.49%)
5.	Los Angeles CA	7,571 (5.57%)
6.	Butte-Bozeman Mount	5,855 (4.30%)
7.	Seattle-Tacoma WA	3,516 (2.58%)
8.	Portland OR	3,275 (2.41%)
9.	Medford-Klamath Falls OR	2,507 (1.84%)
10.	San Diego CA	2,358 (1.73%)

11.	Fresno-Visalia CA	2,036 (1.50%)
12.	Las Vegas NV	1,572 (1.16%)
13.	Phoenix AZ	1,557 (1.14%)
14.	Santa Barbara-Santa Maria-San Luis Obispo CA	1,473 (1.08%)
15.	Monterey-Salinas CA	1,306 (0.96%)
16.	Eugene OR	1,140 (0.84%)
17.	Denver CO	1,135 (0.83%)
18.	Spokane WA	1,118 (0.82%)
19.	Salt Lake City UT	980 (0.72%)
20.	Boise ID	890 (0.65%)

21.	Billings Mount	882 (0.65%)
22.	Missoula Mount	854 (0.63%)
23.	(not set)	700 (0.51%)
24.	Bakersfield CA	668 (0.49%)
25.	Great Falls Mount	651 (0.48%)
26.	Dallas-Ft. Worth TX	515 (0.38%)
27.	Helena Mount	490 (0.36%)
28.	Des Moines-Ames IA	489 (0.36%)
29.	Houston TX	450 (0.33%)
30.	Cincinnati OH	440 (0.32%)
31.	Cleveland-Akron (Canton) OH	427 (0.31%)
32.	Honolulu HI	418 (0.31%)
33.	Eureka CA	363 (0.27%)
34.	Rapid City SD	353 (0.26%)
35.	Washington DC (Hagerstown MD)	352 (0.26%)
36.	Chicago IL	351 (0.26%)
37.	Minneapolis-St. Paul MN	317 (0.23%)
38.	New York NY	314 (0.23%)
39.	Omaha NE	286 (0.21%)
40.	Anchorage AK	286 (0.21%)
41.	Yakima-Pasco-Richland-Kennewick WA	284 (0.21%)
42.	Hartford & New Haven CT	274 (0.20%)
43.	Palm Springs CA	250 (0.18%)
44.	Albuquerque-Santa Fe NM	248 (0.18%)
45.	Colorado Springs-Pueblo CO	247 (0.18%)
46.	Bend OR	241 (0.18%)
47.	Twin Falls ID	197 (0.14%)
48.	Tulsa OK	191 (0.14%)
49.	Idaho Falls-Pocatello ID	189 (0.14%)
50.	Detroit MI	180 (0.13%)



Accessed from
602 Communities
in California



1.	Sacramento	15,389 (19.09%)
2.	Chico	4,915 (6.10%)
3.	San Francisco	4,752 (5.90%)
4.	Redding	4,126 (5.12%)
5.	San Jose	1,829 (2.27%)
6.	Oakland	1,800 (2.23%)
7.	Los Angeles	1,736 (2.15%)
8.	Folsom	1,269 (1.57%)
9.	San Diego	1,144 (1.42%)
10.	Santa Rosa	1,142 (1.42%)

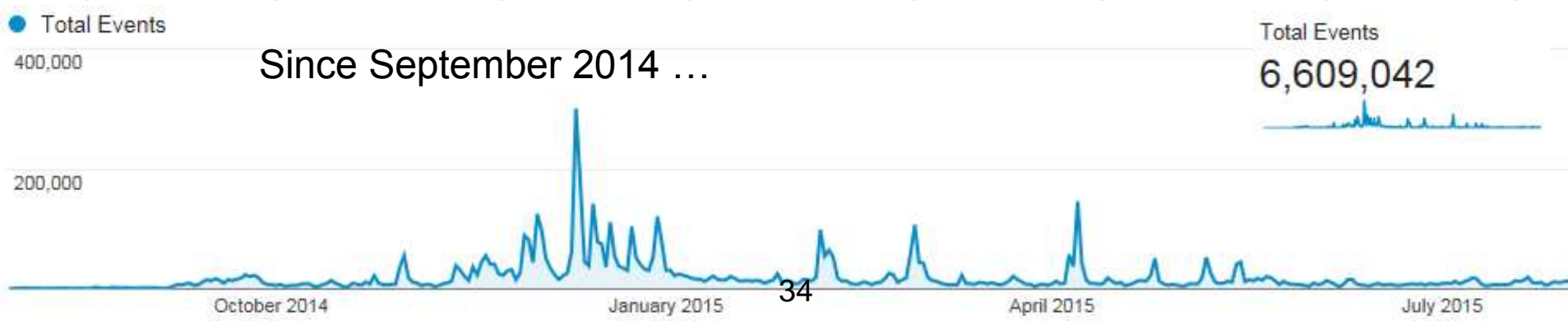
11.	Roseville	1,000 (1.24%)
12.	South Lake Tahoe	963 (1.19%)
13.	Susanville	950 (1.18%)
14.	Truckee	689 (0.85%)
15.	Auburn	669 (0.83%)
16.	Rocklin	652 (0.81%)
17.	Modesto	622 (0.77%)
18.	Fresno	614 (0.76%)
19.	Oroville	614 (0.76%)
20.	Stockton	614 (0.76%)

21.	Yuba City	592 (0.73%)
22.	Bakersfield	588 (0.73%)
23.	Grover Beach	564 (0.70%)
24.	El Dorado Hills	550 (0.68%)
25.	Elk Grove	527 (0.65%)
26.	Weaverville	526 (0.65%)
27.	Corona	513 (0.64%)
28.	Red Bluff	497 (0.62%)
29.	El Cajon	486 (0.60%)
30.	Fremont	469 (0.58%)
31.	Santa Cruz	458 (0.57%)
32.	Pleasanton	428 (0.53%)
33.	Rancho Cordova	420 (0.52%)
34.	Placerville	404 (0.50%)
35.	Santa Clara	395 (0.49%)
36.	Davis	390 (0.48%)
37.	Carmichael	379 (0.47%)
38.	Petaluma	363 (0.45%)
39.	McClellan Park	341 (0.42%)
40.	San Ramon	339 (0.42%)
41.	Sunnyvale	336 (0.42%)
42.	Grass Valley	331 (0.41%)
43.	Monterey	329 (0.41%)
44.	Milpitas	319 (0.40%)
45.	San Rafael	318 (0.39%)
46.	Mount Shasta	313 (0.39%)
47.	Walnut Creek	306 (0.38%)
48.	Citrus Heights	303 (0.38%)
49.	Chester	293 (0.36%)
50.	Visalia	293 (0.36%)

Events

An event is a user interaction such as selecting an icon or a layer.

1.	RTC-CCTV	5,130,129
2.	RTC-CMS	336,266
3.	RTC-Incidents	270,005
4.	RTC-ChainReq	140,547
5.	RTC-RWIS	133,332
6.	RTC-RoadInfo	99,288
7.	CWx-AirTemp	47,747
8.	FWx-Weather	21,533
9.	CWx-Wind	17,221
10.	CWx-24HrPrecip	10,885



Traffic Sources / Referrals

1.	(direct) / (none)	78,796 (56.85%)	21.	actionnewsnow.com / referral	65 (0.05%)
2.	dot.ca.gov / referral	46,051 (33.22%)	22.	excite.com / referral	63 (0.05%)
3.	google / organic	4,522 (3.26%)	23.	pwinet / referral	55 (0.04%)
4.	westernstates.org / referral	1,390 (1.00%)	24.	tripadvisor.com / referral	54 (0.04%)
5.	montana.edu / referral	1,285 (0.93%)	25.	wtiwebdev.coe.montana.edu:50004 / referral	54 (0.04%)
6.	visitmtshasta.com / referral	853 (0.62%)	26.	westerntransportationinstitute.org / referral	52 (0.04%)
7.	bing / organic	702 (0.51%)	27.	69.51.77.202:81 / referral	50 (0.04%)
8.	co.shasta.ca.us / referral	579 (0.42%)	28.	lassenuhd.lhs.schoolfusion.us / referral	50 (0.04%)
9.	yahoo / organic	495 (0.36%)	29.	lm.facebook.com / referral	48 (0.03%)
10.	kbzk.com / referral	337 (0.24%)	30.	us.mg203.mail.yahoo.com / referral	45 (0.03%)
11.	cawscportal.wr.usgs.gov / referral	331 (0.24%)	31.	redbluffdailynews.com / referral	40 (0.03%)
12.	facebook.com / referral	321 (0.23%)	32.	spokesman.com / referral	35 (0.03%)
13.	m.facebook.com / referral	304 (0.22%)	33.	thetruckersreport.com / referral	35 (0.03%)
14.	intranet / referral	268 (0.19%)	34.	t.co / referral	33 (0.02%)
15.	lassenhigh.org / referral	197 (0.14%)	35.	bozemanmagazine.com / referral	31 (0.02%)
16.	csntoday.org / referral	187 (0.13%)	36.	californiaagricultural.com / referral	29 (0.02%)
17.	carsonnow.org / referral	131 (0.09%)	37.	transportationradio.wordpress.com / referral	29 (0.02%)
18.	l.facebook.com / referral	96 (0.07%)	38.	onramp.dot.ca.gov / referral	27 (0.02%)
19.	semalt.com / referral	87 (0.06%)	39.	greatfallstribune.mt.newsmemory.com / referral	26 (0.02%)
20.	kxlf.com / referral	86 (0.06%)	40.	transnet.odot.state.or.us / referral	26 (0.02%)
			41.	36ohk6dgmcd1n-c.c.yom.mail.yahoo.net / referral	25 (0.02%)
			42.	crawler.semalt.com / referral	23 (0.02%)
			43.	charter.net / referral	22 (0.02%)
			44.	babylon / organic	20 (0.01%)
			45.	caltrans.ca.gov / referral	20 (0.01%)
			46.	staging.csntoday.org / referral	20 (0.01%)
			47.	10.160.32.18 / referral	19 (0.01%)
			48.	semalt.semalt.com / referral	19 (0.01%)
			49.	duckduckgo.com / referral	16 (0.01%)
			50.	webhelper.centurylink.com / referral	16 (0.01%)

Caltrans Links

1.	/research/its/cctv/hq/nevada.htm	34,752 (75.46%)
2.	/dist2/cctv/allcams.shtml	3,005 (6.53%)
3.	/research/its/cctv/hq/oregon.htm	2,942 (6.39%)
4.	/dist2/	2,398 (5.21%)
5.	/dist2/chainup/allcntys.htm	1,132 (2.46%)
6.	/research/its/cctv/hq/arizona.htm	759 (1.65%)
7.	/dist2/index.shtml	335 (0.73%)
8.	/dist2/maps.htm	219 (0.48%)
9.	/dist10/	185 (0.40%)
10.	/ctnews/sep14/tc03.shtml	141 (0.31%)
11.	/research/OSS.htm	58 (0.13%)
12.	/hq/paffairs/news/pressrel/14pr097.htm	39 (0.08%)
13.	/research/its/cctv/iframe.htm	28 (0.06%)
14.	/dist3/departments/traffic/cameras/	24 (0.05%)
15.	/dist6/cctv/	17 (0.04%)
16.	/ctnews/sep14/sum.shtml	10 (0.02%)
17.	/	3 (0.01%)
18.	/ctjournal/2012CTJournal_Annual_Report/CTJournal2012.html	1 (0.00%)
19.	/ctjournal/2012CTJournal_Annual_Report/Journal_samp.html	1 (0.00%)
20.	/dist2/pdf/oss091214.pdf	1 (0.00%)
21.	/dist2/planning/pdf/sr139tcr.pdf	1 (0.00%)



<http://dot.ca.gov/dist2/>

QUICK LINKS

- Travelers
- Local Agencies
- Projects
- Local News Releases & Public Information
- Public Records Request
- Traffic Concern Form
- Report Maintenance Work
- Garage Clerk

TRAFFIC ALERTS FOR TUESDAY, MAY 12, 2015

Road Conditions 530 225-3452

Please call the hotline for current road and traffic conditions. The office is not staffed on nights and weekends, but the hotline will be updated as needed.

*****290 CONSTRUCTION PROJECTS*****This summer several safety, curve alignment and paving projects will be in construction on State Route 290 between Redding and Arcata. Please be advised: maximum delays could reach 1 hour, 45 minutes. A public open house will be held Wednesday, May 6, 2015 FROM 5:00 P.M. - 7:00 P.M. at the Trinity County Library. Log on to <http://www.dot.ca.gov/dist2/projects.htm> to view the map and delay times.

BUCKHORN GRADE: Crews have begun work on the split phase of the Buckhorn Grade Safety Improvement project on State Route 290 between Redding and Weaverville. One-way traffic control will be in effect Monday-Saturday from 7:00 a.m. - 7:00 p.m. with peak times and delays. Motorists could experience delays of up to 30 minutes.





GENERAL DAY WEEKEND SCHEDULE: Crews will be working on Buckhorn Grade Friday, May 22, 2015 and 3:00 p.m. They may work Saturday and Sunday but there will be no lane closures at that time. They will not work Monday, May 25, 2015.

OPEN HOUSE: Caltrans will hold an open house on Wednesday, May 6, 2015 from 5:00-7:00 p.m. at the Trinity County Library to discuss the SR 290 and Downtown Weaverville projects. Project managers will be on hand to answer questions or concerns.

290 WOLD SHASTA: Shasta ADA will remove obstructions and barriers for pedestrians. One-way traffic control Monday-Friday from 7:00 a.m. - 5:00 p.m. just west of Mackley Alley to Red Bluff Road in the westbound direction. Expected delays: 12-30 mins. Work is expected to continue through November.

290 E/Bella Glady Project: Crews will be performing a paving operation from Intermission Rd. to 2.5 miles west of Ingot beginning Tuesday, May 5, 2015. Traffic control will be in place between the hours of 7 a.m. - 4:00 p.m. Delays are expected to be about 10 mins.

290 SPAT CREEK: 36 ALIGNMENT PROJECT: One-way traffic control will be in effect eight miles from Burney from 7:00 a.m. - 7:00 p.m., including some weekends. Motorists could experience up to 15 minutes delays. This project is expected to be completed by July.

1.	/research/its/cctv/hq/nevada.htm		31,146 (85.57%)
2.	/research/its/cctv/hq/oregon.htm		2,672 (7.34%)
3.	/dist2/		817 (2.24%)
4.	/research/its/cctv/hq/arizona.htm		612 (1.68%)

U.GOV TRANSPORTATION

[Home](#) [Travel](#) [Business](#) [Engineering](#) [News](#) [Maps](#) [Jobs](#) [About Caltrans](#) [Contact Us](#)

[District 3 & North Region Map](#) [Travel Information Map](#) [Caltrans District Map](#)

ADDITIONAL LINKS

- District 3 Projects
- District 3 Planned Roadwork
- Live Traffic Cameras
- District 3 Divisions
- Latest News and Traffic Alerts
- Request for As-Built Plans
- Damage Claims
- All District Offices
- Caltrans is Hiring
- Contact Us

RELATED LINKS

- Business, Transportation and Housing
- California Highway Patrol
- Department of Motor Vehicles

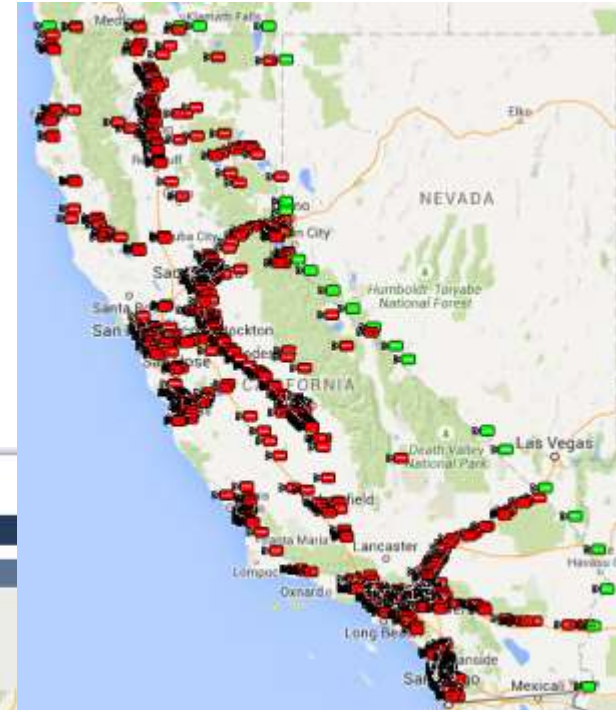
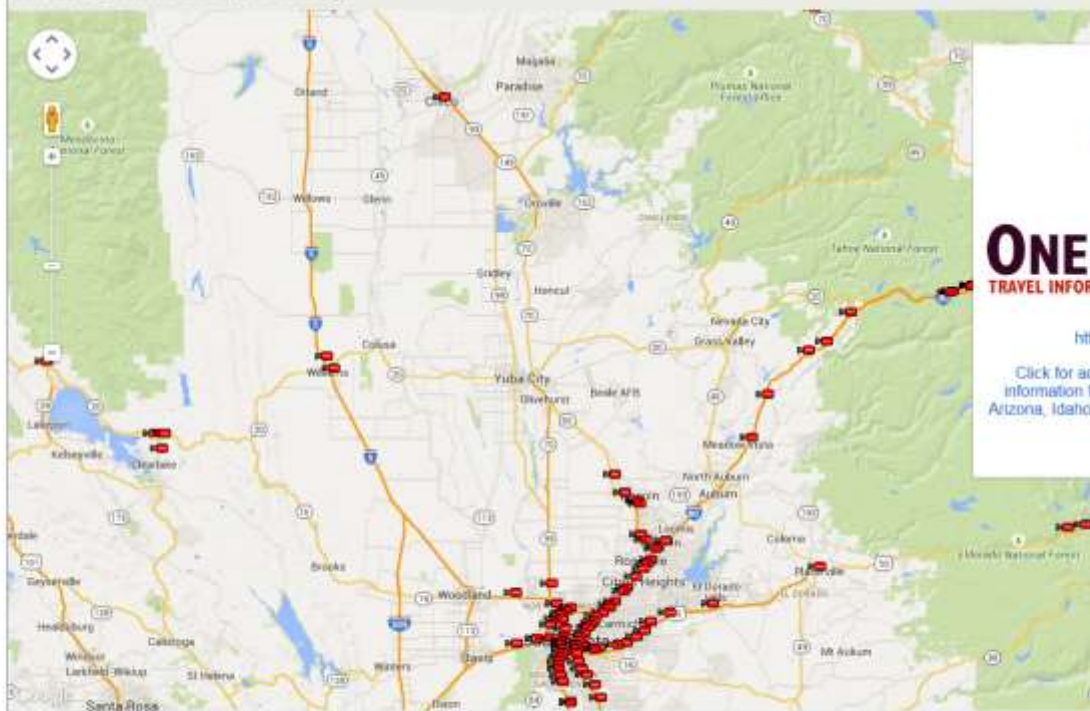


DISTRICT 3 - BUTTE, COLUSA, EL DORADO, GLENN, NEVADA, PLACER, SACRAMENTO, SIERRA, SUTTER, YOLO AND YUBA COUNTIES

[Smart Phone Users click here for Caltrans Sacramento area traffic cameras](#)

The live traffic videos are in a Windows Video format. In order to play them on a Mac you will need to install the Windows Media Components for QuickTime.
<http://windows.microsoft.com/US/windows/products/windows-media-player/whmcomponents>

Click on a red camera icon on the map to view an image.



ONE STOP SHOP
TRAVEL INFORMATION FOR THE WESTERN STATES

<http://oss.earthshare.org>

Click for additional camera images and road information from Nevada, Oregon, Washington, Arizona, Idaho, Utah, Montana, Wyoming, Colorado and New Mexico

MSU Links

<http://www.montana.edu/news/15240/msu-39-s-wti-launches-new-traveler-website-for-montana-rockies-region>

<http://www.montana.edu/weather/>



Montana State University > Weather and Road Conditions

Weather and Road Conditions

- [One-Stop Shop for Traveler Information \(OSS\)](#)
- [Montana State University ECE/ORSL Weather Station](#)
- [Gallatin National Forest Avalanche Center Advisories](#)

Montana Department of Transportation

- [Montana Hourly Weather Roundup](#)
- [Montana Zone Forecasts -- Western](#)
- [Montana Zone Forecasts -- Southwest and North Central](#)
- [Montana Zone Forecasts -- South Central and Southeast](#)
- [Montana Zone Forecasts -- Northeast](#)
- [State Forecast for Montana](#)
- [Extended Outlook for Montana](#)
- [Montana Weather Summary](#)
- [Montana Detailed Road Report](#)
- [Montana Road Report Maps and Traveler Information](#)

The NWS weather and road information is provided by a network feed from the Montana Department of Transportation. Weather items are updated starting at 20 minutes after the hour. Road reports are updated around 7:00 a.m. every day, and again around 3:00 p.m. except for weekends and holidays. Road reports may be updated during the day as conditions warrant.

1.	/news/15240/msu-39-s-wti-launches-new-traveler-website-for-montana-rockies-region	1,063 (84.23%)
2.	/news/15120/wti-project-wins-award-for-intelligent-transportation-technology	185 (14.66%)
3.	/weather/	14 (1.11%)

A-Z Index | Directories | Search MSU

University Communications > MSU News

MSU's WTI launches new traveler website for Montana, Rockies region

November 14, 2014 - MSU News Service

BOZEMAN – As Montanans prepare for the winter holiday travel season, a website developed at Montana State University is set to provide motorists in the Rocky Mountain region with up-to-the-minute information on weather and road conditions.

The [One-Stop Shop for Traveler Information \(OSS\)](#), which was developed at MSU's Western Transportation Institute and sponsored by Caltrans, offers travelers a website that integrates weather and road information from multiple Western states. Unlike websites for state transportation departments, the OSS provides travelers with current road information that does not stop at jurisdictional boundaries. Combined with real-time weather information, the OSS provides motorists with a seamless decision-making tool for maintaining and enhancing traveler safety and mobility.

While the [award-winning website](#) has been in operation since 2011 for routes in California, Oregon, Washington and Nevada, the WTI team working on the project have now added Montana, Idaho, Wyoming, Utah, Colorado, New Mexico and Arizona.

Doug Galarus, senior research scientist and manager of WTI's Systems Engineering, Integration and Development Program, said the pioneering effort at integrating information from various agencies will be a major asset to motorists in the Rockies, where winter driving can be particularly hazardous.

"During a storm that hit California over the Halloween weekend, we had nearly 2,000 user sessions and showed over 87,000 roadside camera images to users mostly in California and Nevada," Galarus said. "With the expansion to other states, including Montana, and with winter having just started, we really think the site will take off."

With its mission to make rural transportation systems safer for everyone, Galarus said that OSS is the kind of work that WTI was meant to do.

WTI is a collaborative research partnership involving MSU's College of Engineering, the Montana Department of Transportation and California's Caltrans, which serves the nation's most populous state. Now celebrating its 20th year, the Western Transportation Institute at MSU was established to provide innovative solutions to transportation problems at all levels, from local to international. More information about the WTI is available at www.westerntransportationinstitute.org.

Contact: Doug Galarus, (406) 994-5268 or dgalarus@coe.montana.edu.

111
1
1
6

Recommend
Tweet
+1
Share

The One-Stop Shop for Traveler Information (OSS), which was developed at MSU's Western Transportation Institute and sponsored by Caltrans, offers travelers a website that integrates weather and road information from multiple Western states that does not stop at jurisdictional boundaries. Combined with real-time weather information, the OSS provides motorists with a seamless decision-making tool for maintaining and enhancing traveler safety and mobility.

High-Pin Available

Subscribe to MSU Newsletters

E-mail:

Subscribe

Recent News

- [Sweet science](#)
- [Type of Place](#)
- [Elemental bond](#)
- [A triple threat](#)
- [What it means to be human](#)



WTI Link

WTI

 Western Transportation
INSTITUTE

[About WTI](#)
[Research Areas](#)
[Centers](#)
[Laboratories](#)
[Professional
Development](#)
[Publications](#)
[Search WTI](#)



The Western Transportation Institute is the country's largest National University Transportation Center focused on rural transportation issues.

Because we live and work in rural communities, we understand the critical roles rural transportation plays in the lives of people, in the environment and in the economy.

We draw from our [eight integrated research groups](#) to create solutions that work for our clients, sponsors and rural transportation research partners. WTI focuses on rural issues, but some of our program areas also address the concerns of the urban environment. Whatever the objective, we bring innovation and expertise to each WTI transportation research project.

WTI Project News

The One Stop Shop for Traveler Information now includes Montana – and Idaho, Utah, Arizona, New Mexico, Colorado, and Wyoming! OSS has been providing travelers in California, Oregon, Washington, and Nevada access to route-oriented, real-time and near real time weather and road information through a single website, and now the Rocky Mountain States have access to this valuable traveler tool. Developed in partnership by WTI and Caltrans, OSS won an International award from the Intelligent Transportation Society of America for Best New Innovative Practice earlier this fall. Visit the OSS site at <http://oss.weathershare.org/>.

Great job goes out to Doug Galarus, Leann Koon, Dan Richter, and Caltrans Project Manager, Sean Campbell and Caltrans Project Champion, Ian Turnbull.

See the MSU news article here: <http://www.montana.edu/news/15240/msu-39-s-wti-launches-new-traveler-website-for-montana-rockies-region>

to the [Montana State University](#) campus in Bozeman, Montana. We Washington, and a [large testing facility in rural Montana](#) near rural transportation research needs.

es Montana – and Idaho, Utah, Arizona, New Mexico, Colorado, and a, Oregon, Washington, and Nevada access to route-oriented, real-rough a single website, and now the Rocky Mountain States have ership by WTI and Caltrans, OSS won an International award from the w Innovative Practice earlier this fall. Visit the OSS site at

Richter, and Caltrans Project Manager, Sean Campbell and Caltrans

[/news/15240/msu-39-s-wti-launches-new-traveler-website-for-](#)

On the News ...

D2 on ActionNewsNow (February 2014)



<http://www.westernstates.org/Projects/OSS/Updates/2014-02-21.html>

ABC Montana (November 16th, 2014)



FOX Montana (November 16th, 2014)



KTVM (November 17th, 2014, 10 PM)



KTVM (November 17th, 2014, 6 PM)



<http://www.kbzk.com/weather/>

<http://www.kxlf.com/news/msu-launches-new-rocky-mountain-weather-and-road-condition-reports/>

TRENDING

Search



7 KBZK.com

Bozeman, MT | Continuous News and Weather

 **13°**
Bozeman >



NEWS

SPORTS

WEATHER

COMMUNITY

VIDEOS

ON KBZK

NEWS - WEATHER

[More News - Weather](#)



32 minutes 26 seconds ago

MSU launches new Rocky Mountain weather and road condition reports

BOZEMAN - Just in time for the winter travel season, a Montana State University website is ready to provide continuing information on weather and road conditions across the Rocky Mountain region. In a news release, MSU said, "The One-Stop Shop for Traveler Information (OSS), which was developed at MSU's Western Transportation Institute and sponsored by Caltrans, offers travelers a website that integrates weather and road information from multiple Western states. Unlike websites for state transportation departments, the OSS provides travelers with current road information that does not stop at jurisdictional boundaries. Combined with real-time weather information, the OSS... [Read Story >](#)

SHARE:   

Hospitality workers like you are earning wireless discounts.

[Check eligibility](#)



Get the LG G Pad Tablet for 99¢ with purchase of any smartphone.*

*Each req.'s new 2-yr wireless agmt (or AT&T Next™ on smartphone) w/qual. plans. Offer req's.



WEATHER NEWS

- MSU launches new Rocky Mountain weather and road condition reports



Twelfth Annual Sheriff's Open House Free Admission!



Saturday, May 16th, 2015 ★ 10am-2pm

call for more info 775.283.7809

FREE

Food!

Music!

Games!

911 E. Musser St.

Home

Chains, snow tires required over Sierra mountain passes

Submitted by Jeff Munson on Wed, 12/24/2014 - 4:34pm

[Tweet](#) 2 [Like](#) 49 [+1](#) 0 [Share](#)

UPDATE: Snow is falling down to the valley floor on this Christmas Eve night. [Go here](#) for the latest road conditions before you head out traveling. [Go here](#) for the latest forecast from the National Weather Service.

Snow and lower elevation rain this afternoon is expected to change to snow at all elevations this evening behind a cold front. A period of moderate to heavy snow is expected in the Sierra through early evening, with whiteout conditions possible over the passes, according to the weather service. Lake Tahoe and much of Northern Nevada is under a Winter Weather Advisory.

Snow will end tonight as the front moves into eastern and southern Nevada. Snowfall totals through this evening are forecast to be 6-12 inches over Sierra passes, 3-6 inches around Lake Tahoe (at lake level), and 1 to 3 inches for the valley floors of northeast California and western Nevada, according to the weather service.



Visit Carson City

Something for everyone at #Brew #Brats and #Ballet this Saturday, an annual event at the Brewery Arts Center for more info and tickets link here ...

Get closer to the divine at Brew, Brats and Ballet
[rgj.com](#)

Brew, Brats and Ballet choreographers talk about their inspiration and process.





D0bby
N. Idaho

Destination Expert
for Yellowstone
National Park

posts: 11,915
reviews: 86

3. Re: safe places to stay on a roadtrip from Toronto to San Franci

Nov 17, 2014, 8:19 AM

Save this Post

I posted this elsewhere, but I found this neat link to road conditions in the Western US. Once your trip gets to the edge of this map, you can use the route planner to give you up-to-the-minute road conditions for your route. I would bookmark this on your mobile device.

<http://oss.weathershare.org/>

(I had trouble getting to this website this morning, so had to google * One-Stop Shop for Traveler Information *)

When you are parking at your overnight stops, I would also try to back up to a light pole in the parking lot which will block the doors shut.



D0bby
N. Idaho

Destination Expert
for Yellowstone
National Park

posts: 11,915
reviews: 86

2. Re: Ohio to Berkeley/SF area end of December

Nov 22, 2014, 8:58 PM

Save this Post

I'll just add a couple of things to Randy's thorough post.

Carry paper maps, either from AAA or buy a good Road Atlas at a brick and mortar bookstore. If you have to divert during your trip due to weather this will be more useful (and safer) than trying to depend on GPS routing.

editing to add: Here is a good Road Condition site which covers multi-states. I did find in looking at the Idaho DOT site for comparison the DOT site had more information, but this one is a good start for a general look-see.

<http://oss.weathershare.org/>

As a woman traveling solo, I would plan to stop by dark each night. www.sunrisesunset.com will give you your daylight hours.

I also recommend audio books to listen to as you make your way across the country.

Keep your gas tank topped up especially in the West. At 1/2 start planning where you are going to fill and fill by 1/4. I would not let it get to 1/4 in winter.

Have fun, be safe and give us a trip report when you get there!

Edited: 9:00 pm, November 22, 2014



D0bby
N. Idaho

Destination Expert
for Yellowstone
National Park

4. Re: 4 day road trip through Oregon and Washington

Nov 17, 2014, 8:49 AM

Here is a link to road conditions across the Western States. If you zoom it will give you current chain/traction tire recommendations/requirements.

<http://oss.weathershare.org/>

You can use the route planner feature (only has begin and end, can't do midpoints) which also pops up an elevation profile.



D0bby
N. Idaho

Destination Expert
for Yellowstone
National Park

posts: 11,915
reviews: 86

Winter Road Conditions link for Western US

Nov 17, 2014, 8:15 AM

http://oss.weathershare.org

(I did have trouble getting to this web address the first time I tried it this morning and had to google One-Stop Shop for Traveler Information and link from there.)

I saw an item on this website in the local paper this morning which provides motorists with current info on weather and road conditions in multiple western states. It's pretty neat because it goes across jurisdictional boundaries. It was developed by folks at Montana State University in Bozeman.

If you look at the upper right, there is a trip planner where you can put in start and end points and it will even pop up an elevation profile. If you zoom in a bit you can see road conditions, chain/traction tire requirements, closures, warnings, all sorts of stuff! FWIW I84 in Oregon still looks to be a mess and is still requiring/recommending carrying chains or having traction tires from the bad storm that moved thru a few days ago. In the instructions I also saw where it will show you all the rest stops!

I've only played with it a bit this morning (hey, it's 5AM and I don't have much coffee on board!) and the only downside I can see is that it may give you more information than you want, lol.

Reply

[Report inappropriate content](#)




D0bby
N. Idaho

 Destination Expert
for Yellowstone
National Park

posts: 11,915
reviews: 86

1. Re: Driving from Spokane to San Francisco in the winter

Dec 04, 2014, 11:44 AM

 Save this Post

Well Heather, it will probably just depend on what is going on at the time. For instance today on the Idaho Palouse (Moscow ID area) down to Lewiston we've had freezing rain with snow on top of it. Yuck. Supposed to have rain for tomorrow. I would much rather drive thru snow than on ice caused by freezing rain.

What routes are you considering?

From Spokane or CdA south to Pullman or Moscow, then down US95 in Idaho to Boise, south from there to Oregon and in to Nevada?

Or thru Eastern Washington, SW from Spokane on 395 to the Tri Cities, pick up I82 there to I84 then along the east side of the mountains to Bend?

Since you are going multi state, you might also want to post on the Road Trip forum.

tripadvisor.com/ShowForum-g1-i12567-Road_Tri...

Here also is an interesting website that shows you road conditions all over the West. It's great for an overview, but go to the individual state sites for more specific information.

<http://oss.weathershare.org/>

Good luck. Just heading to the local airport this morning and hope it is less treacherous in 45 minutes!

Pam



Tet14
Uden, The...

22. Re: 11-day trips from Seattle to Grand Canyon in Christmas 2014

Dec 11, 2014, 10:34 AM

Maybe try this site:

<http://oss.weathershare.org/>



Tet14
Uden, The...

 Destination Expert
for Road Trips

5. Re: winter roads from texas to washington

Dec 18, 2014, 11:55 AM

Watch 10 days weatherforecast on www.weather.com or use a site like this one:

<http://oss.weathershare.org/>



D0bby
N. Idaho

 Destination Expert
for Yellowstone
National Park

posts: 11,915
reviews: 86

5. Re: Winter Trip: Quad Cities (IA/IL) to San Francisco 12/20/14

Dec 18, 2014, 10:14 AM

Here is a road condition link that might be helpful to you as you travel. It covers the Western states. In just looking at it and comparing data for my local area it does give a good overview, but you will want to focus in on individual states for more comprehensive data, especially if the weather is bad as Photoguy indicates it is predicted to be.

<http://oss.weathershare.org/>

I also always feel compelled to say this, but make sure you have paper maps in case you need to divert from your chosen route due to weather. Do not depend on GPS. Keep your eye on your gas tank especially in the west. Don't let it get below 1/4. You should start planning when you are going to fill when you get to about 1/2 a tank.

Edited: 10:18 am, December 18, 2014



D0bby
N. Idaho

 Destination Expert
for Yellowstone
National Park

posts: 11,915
reviews: 86

4. Re: Denver to Las Vegas - Elevation Migraines - Southern Route

Jan 08, 2015, 11:10 AM

 Save this Post

You can also go to this website for road conditions which will also give you an elevation profile.

<http://oss.weathershare.org/>

Click on the Route Planner in the upper right. Plug in your route. You will have to do it in segments since I have not found that you can plug in intermediate waypoints to make it follow the route you want. Anyway, an elevation chart will pop up after you click on the Plan Route button.

Pam

Dec 11, 2014

#64



Lepton1
Road Train Member

Messages: 4,308
Likes Received: 3,888

I just found this amazing web site for fast information traveling in the western states. Gives up to date status of chaining requirements and a variety of other stuff:

<http://oss.weathershare.org>

Lepton1, Dec 11, 2014

#64

otherhalftw and Mr.X like this.

Jan 3, 2015

#4



Lepton1
Road Train Member

Messages: 4,308
Likes Received: 3,888
Joined: Nov 23, 2012

MyRadar is an excellent app.

Web sites I regularly consult for trip planning:

m.accuweather.com/en/us/national/weather-radar

www.weather.com/maps/current

oss.weathershare.org <--- outstanding for 11 western states, gives current road conditions, highway camera views, road hazards including crash incident updates from highway patrol, etc. etc.

I consult all of these before any trip for trip planning, during 30 minute breaks, before starting each day, etc. etc.

Lepton1, Jan 3, 2015

#4

Floorguy1 likes this.

<https://transportationradio.wordpress.com/2014/11/19/rural-traveler-information-site-grows/>

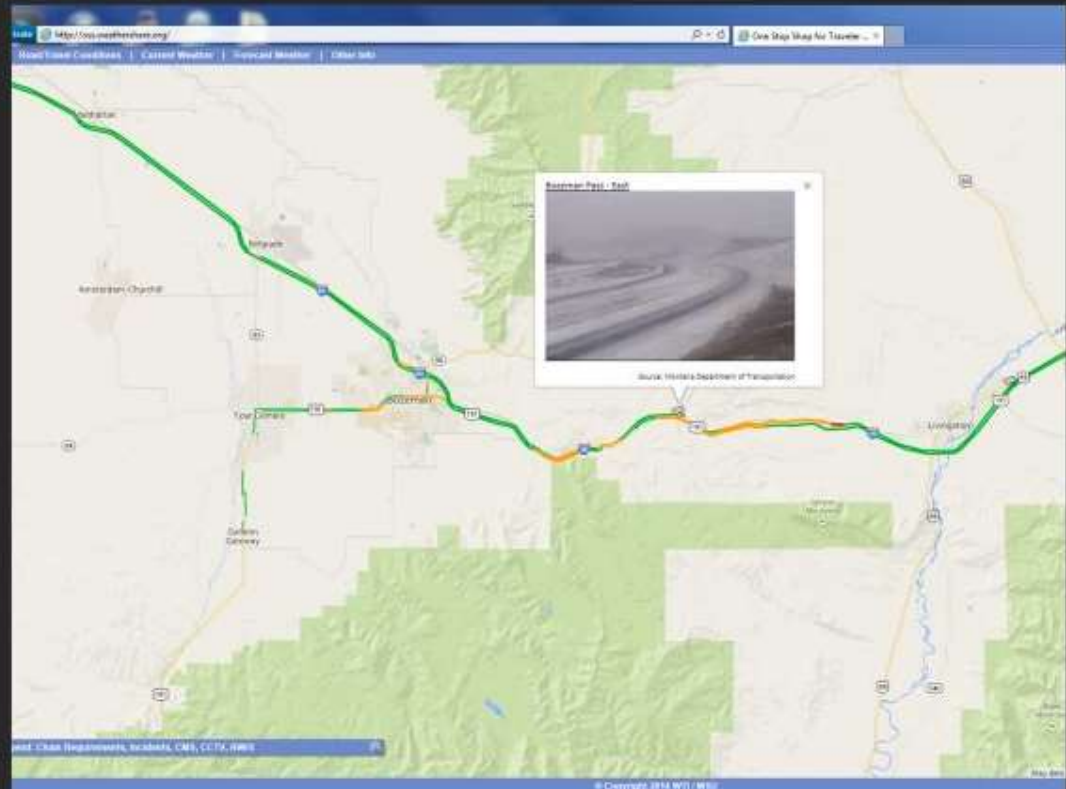
Transportation Radio

Rural Traveler Information Site Grows

Posted on November 19, 2014 by brwagenblast

Just in time for winter weather, the [One-Stop Shop for Rural Traveler Information](#) now includes many of the states in the western lower 48. The site was developed by the [Western Transportation Institute](#) at [Montana State University](#). We learn more in this [report](#) from Bernie Wagenblast.

[Listen to story](#)



Traffic Map

This Traffic Map provides a color schemed map of Los Angeles showing areas of high impact traffic opposed to areas of low traffic. By clicking on the layer options at the top left of the map you can control the amount of information available.

Help Road/Travel Conditions Current Weather Forecast Weather Other Info SHARE


Route Planner Map

Check/Uncheck All
☐ Chain Requirements
☐ Incidents
☐ CMS
☒ CCTV
☐ RWIS
☐ Road Information
☒ Google Traffic

Welcome to the One-Stop-Shop (OSS).
 If you're unsure how to use OSS, take a look at the [User Guide](#) and the [Basic Usage video](#). To get help when using OSS, click on "Help" in the upper left of the screen.
 OSS is provided as service to the public. System performance and data quality cannot be guaranteed. As with all traveler information data, drivers are responsible for the decisions they make when using this data.
 Thanks for using OSS!
 Click [here](#) if you don't want to see this message again.

Legend: CCTV
 Active CMS CCTV Camera Construction Information
 Inactive CMS Chain Restriction Incident Commercial Vehicle Information
 RWIS with Road Temp $\leq 32^{\circ}$ RWIS

Map data ©2015 Google, INEGI 20 km Terms of Use Report a map error

 **David Chamberlain** All the webcams, weather, incident reports etc on one page: <http://oss.weathershare.org/...#>


One Stop Shop for Traveler Information

If you're unsure how to use OSS, take a look at the User Guide and the Basic Usage video . To get help when using OSS, click on "Help" in the upper left of the screen.

OSS.WEATHERSHARE.ORG

facebook

👍 1 · December 20, 2014 at 10:11am

 **US National Weather Service Reno Nevada** ✓ We use that one here for situational awareness. Thanks for sharing!

👍 1 · December 20, 2014 at 10:13am

 **KTVN Channel 2 News** ✓ shared US National Weather Service Reno Nevada's photo.

March 11 · 🌐

There are no chain requirements on Donner Summit right now. For the latest road conditions, call 511 or go to www.ktvn.com.

You can stay up to date on weather in our area with our KTVN Storm Watch weather app.

The app gives you forecast information, like radar, storm tracking and more for any location in the country, all in the palm of your hand.

You can download it for free for your iPhone, iPad, or Android smartphone. Just search KTVN in the iTunes or Google Play Store.



US National Weather Service Reno Nevada

Just wet over Donner Summit. No chain requirements at this time. Here is a great site for monitoring current road conditions and chain and snow tire requirements...

<http://oss.weathershare.org/#>

Like · Comment · Share

👍 Elisabeth Mendoza, Howard Borja, CindyLou Peek and 3 others like this.



US National Weather Service Reno Nevada ✓ added 2 new photos.

April 5 · 🌐

Isolated snow showers have resulted in light accumulations on Highway 36 at Fredonyer Summit and Highway 44 at Bogard Rest area. Road temperatures in the low 40s have kept snow from accumulating on roads so far, but as seen in the webcam screenshots they are shiny and likely slick early this morning. Keep up-to-date on road conditions before you venture out for Easter festivities today! (<http://oss.weathershare.org/#>)



Like · Comment

👍 Linda Boegle, Jennifer Hiler, Colleen Gayle Price-Garcia and 48 others like this.

🔄 2 shares

*I will get things done
for Montana*

**Apply
to serve in
AmeriCorps**



Turkey Day Sa

Hard to believe, but Thank filled with tasty food, festive safety concerns to keep in

According to the National F caused by cooking accident than on an average day! S

- Never leave your hom food is baking in the o. Additionally, set an ov you don't burn your fo
- Keep young children a away from the stove.
- Clear the floor in your from any tripping haza
- Stay in the kitchen wh cooking on the stove.
- Avoid wearing loose c dangling jewelry while
- Check the batteries in smoke alarms

Food Safet

It's an American tradition to ourselves on Thanksgiving

- Cook your turkey until
- Avoid leaving food ou more hours
- If you are traveling w higher by wrapping in filled with ice.
- The 5-second rule is a

Holiday Travel

If you are heading out to eat someone else's Thanksgiving feast, keep these travel safety tips in mind before you go:

- Check road conditions frequently. Montana weather can vary drastically from one end of the state to the other. <http://oss.weathershare.org/#>
- Keep an emergency supply kit in your car for all members of your family:
 - Heavy coat, gloves, hat
 - Sturdy boots
 - Blanket or sleeping bag
 - Extra water and food
 - Small shovel or scoop (you can also pop off a hubcap or the windshield visor and use it to scoop snow)
 - Bright flagging or a flashlight to identify your location
 - First aid kit
- Don't rush. Expect heavy traffic. Leave early so you don't have to hurry.
- Keep your gas tank full- no one wants to be stranded in a cold car.



One Stop Shop for Traveler Information

Another great traveler's link is oss.weathershare.org the One Stop Shop for Traveler Information (OSS). This website, developed by the Western Transportation Institute in cooperation with Caltrans District 2, contains road and weather information for California, Oregon, Washington, and Nevada. OSS utilizes a multi-state road conditions map including a planning feature that allows the user to indicate the start and end points of their trip and uses Google routing to find an efficient route.

For more information call the Public Information Office at 530-229-0511 or 530-225-3260.

MyOutdoorBuddy.com®

Outdoor News

Home Fishing Hunting Outdoors Columnists Destinations Photos Store



New Feature

Click on [Columnists](#) to access travelogues, field reports, advice, humorous tales and answers to your Q's!

Weather
Advertising

Contact

Opinion

Products-Services



Website of the Week



Share
Your
Photo

PACIFIC
PRIDE

Medford Fuel

HOME HEAT FUEL DELIVERY COMMERCIAL FUELING

Bill Terpening

Click here for info!

Now featuring

Ethanol Free Clear Super

Caltrans warns drivers to be vigilant

10/22/12 -- Caltrans' Redding office is reminding motorists traveling in northern California to be vigilant regarding winter driving and be prepared on the roadways for possible changes in the weather or road conditions. With the current rain and snowfall prediction, now is the time to become familiar with the informational tools and tips available on the internet and to prepare for travel in the north state. The website links listed below have the traveling public in mind and are readily available on the Caltrans District 2 [webpage](#).

District 2 Chain Control Map/QuickMap

At this [website](#), motorists can keep track of changing conditions and plan a route of travel specifically within northern California. The Caltrans District 2 Northstate Chain Control Map includes the counties of Siskiyou, Modoc, Lassen, Shasta, Trinity, Tehama, Butte, and Plumas and has information on road conditions, chain control restrictions, and definitions of what the restrictions mean. Also available is the Caltrans [Quickmap](#), which features the same traveler's information but includes statewide road information.

One Stop Shop for Traveler Information

Another great traveler's link is oss.weathershare.org the One Stop Shop for Traveler Information (OSS). This website, developed by the Western Transportation Institute in cooperation with Caltrans District 2, contains road and weather information for California, Oregon, Washington, and Nevada. OSS utilizes a multi-state road conditions map including a planning feature that allows the user to indicate the start and end points of their trip and uses Google routing to find an efficient route.

For more information call the Public Information Office at 530-229-0511 or 530-225-3260.

Search

Go

Click on ads for more info

VISIT
**ROARING CAMP
MINING CO.**
**Gold Mining
Camping
Guided Tours
Fishing**
IN THE CALIFORNIA
MOTHER LODGE

ITS America Award

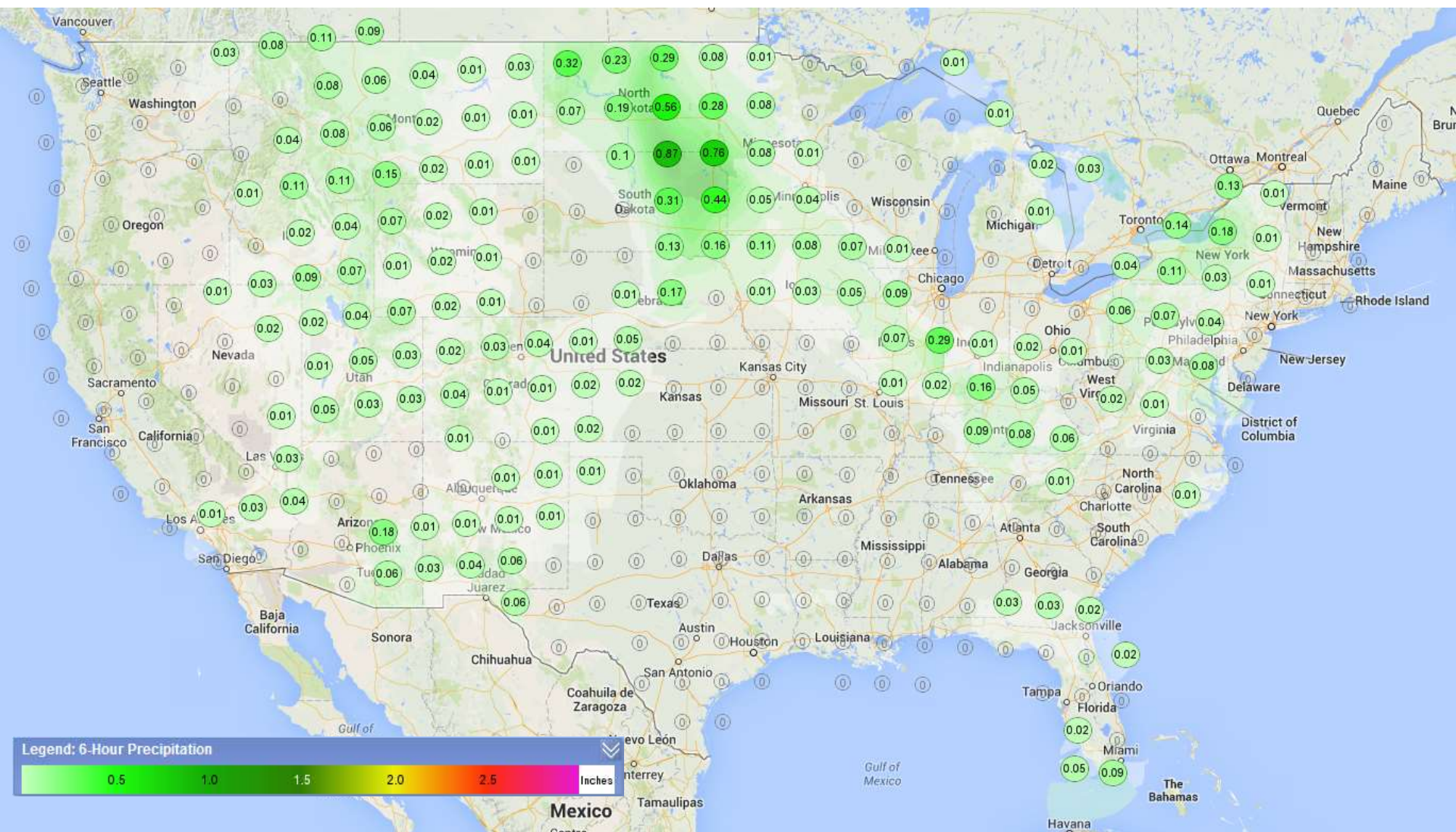
At the 2014 ITS World Congress in Detroit, Michigan, the One-Stop Shop was announced as the winner of ITS America's Best of ITS Award for Best New Innovative Practice – Research Design and Innovation.



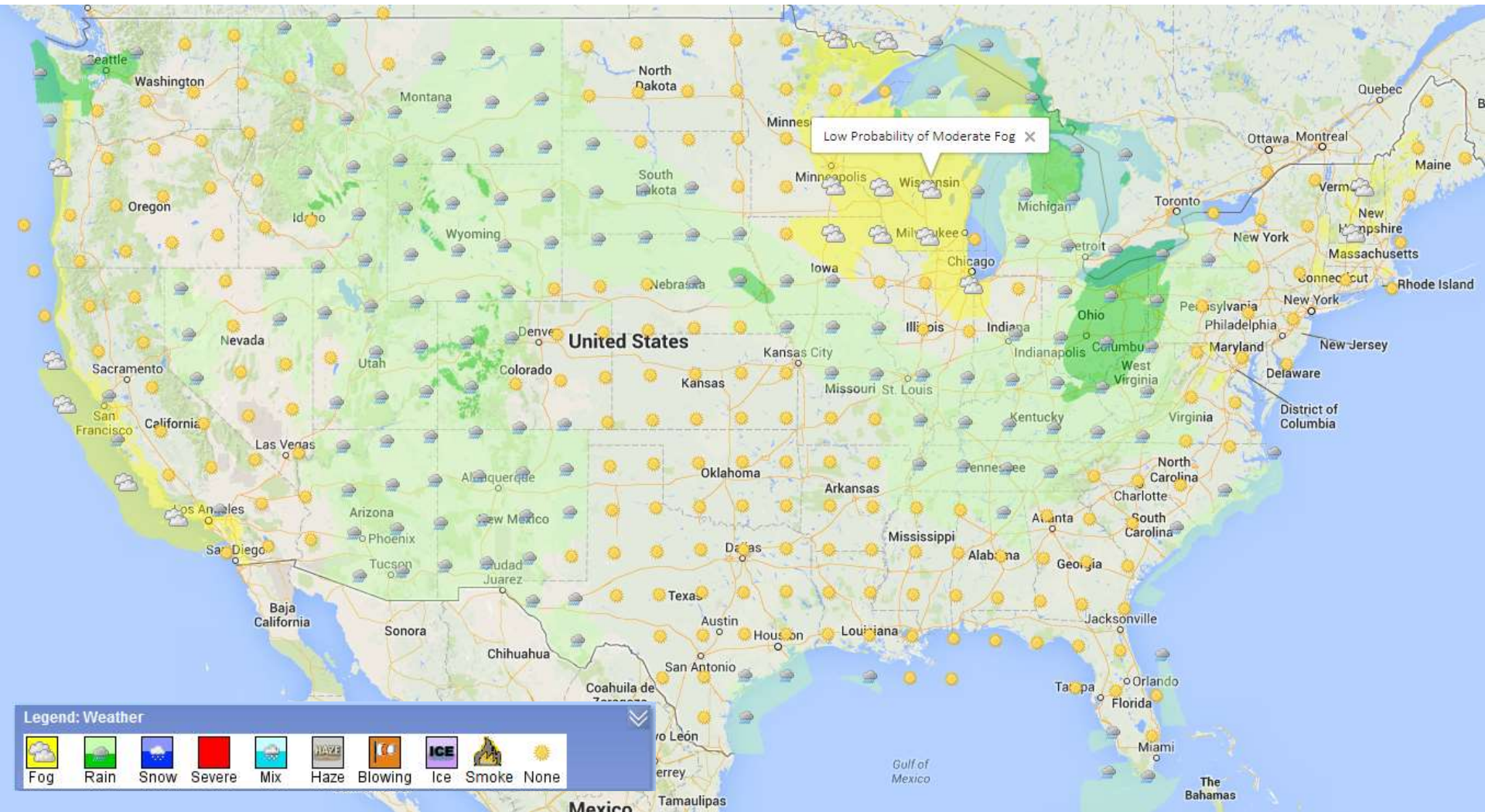
Next Steps : Phase 3

- *Add Missing Field Elements for Current States*
- *Add Layers : Fire?*
- *Address Mobile Use*
- *Expand Further?*

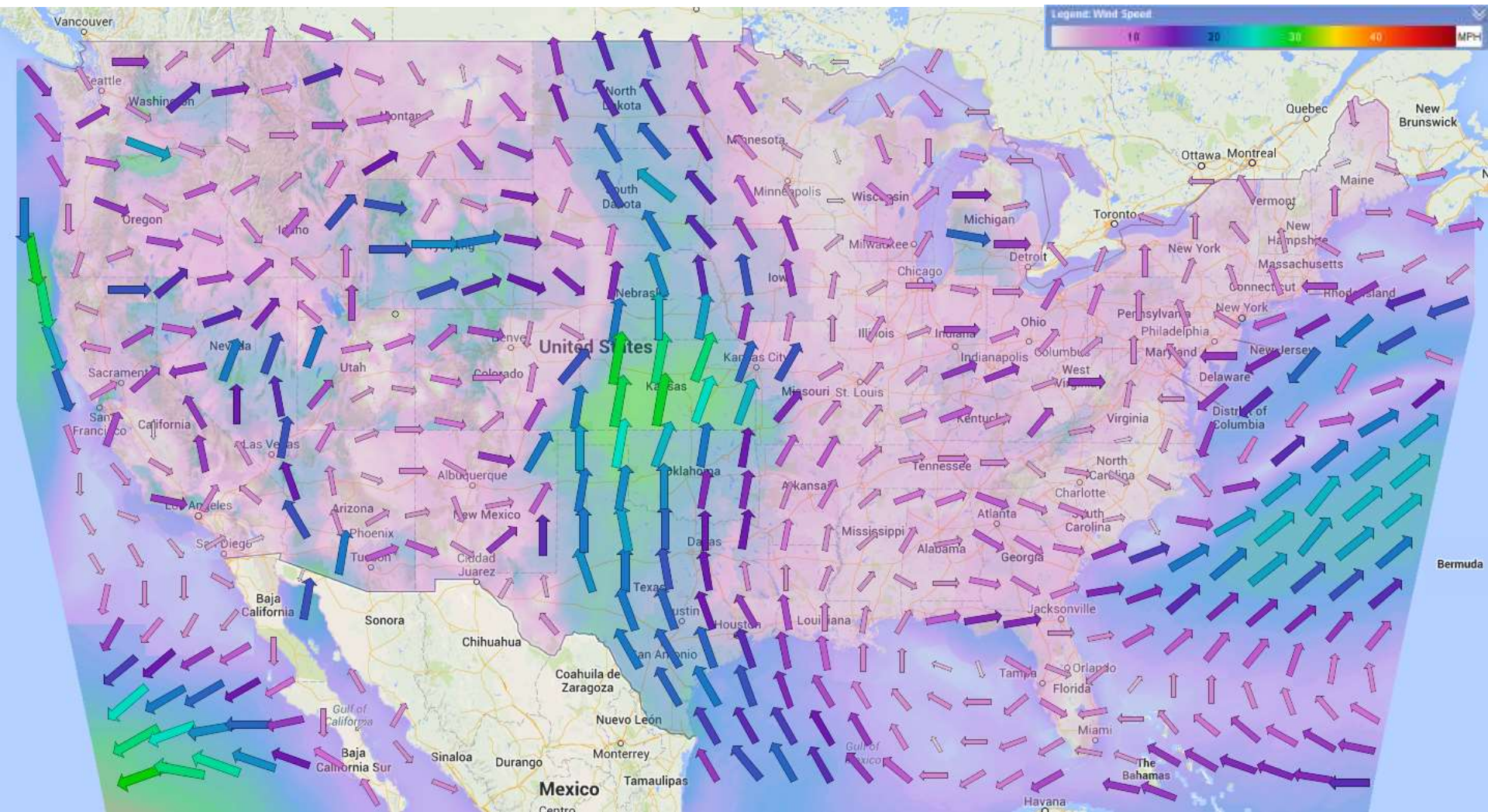
Expansion?



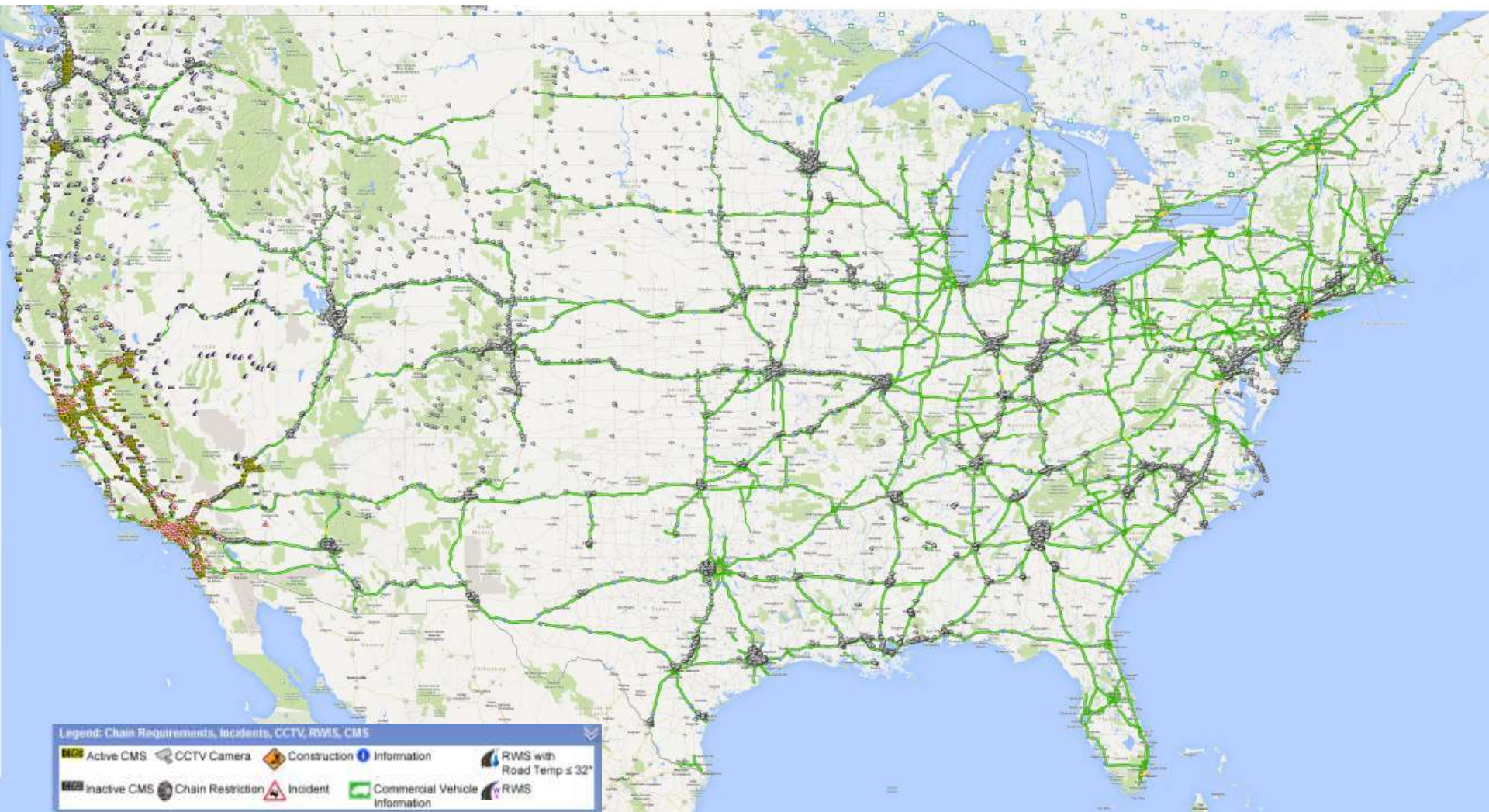
Expansion?



Expansion?



Expansion?



Acknowledgements

- *Caltrans D2*
- *Caltrans DRI*
- *WSRTC*
- *FHWA – Clarus*
- *WTI UTC*
- *David Veneziano*



Contacts:

Sean Campbell
Caltrans DRISI
(916) 654-8868

Sean.Campbell@dot.ca.gov

Doug Galarus
Western Transportation Institute
(406) 994-5268

dgalarus@coe.montana.edu

Ian Turnbull
Caltrans District 2
(530) 225-3320

Ian.Turnbull@dot.ca.gov

For Further Information see:

<http://oss.weathershare.org>

<http://www.westernstates.org>

<http://www.westernstates.org/Projects/OSS/>