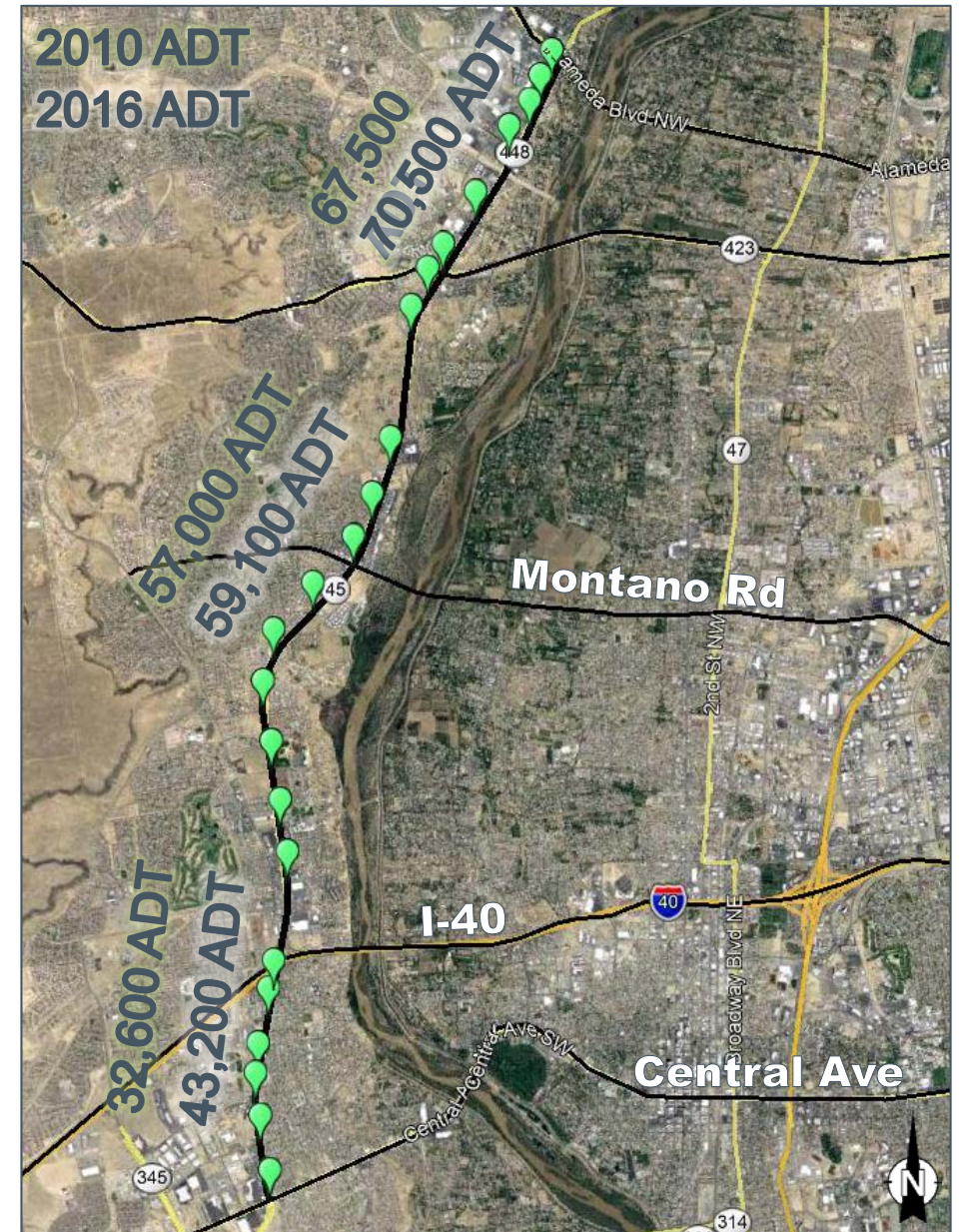


Evolving to ATSPM for Safety and Mobility within Small Communities

Coors Boulevard Albuquerque, NM



Central Avenue, Albuquerque, NM

› Implementation of Bus Rapid Transit



Plum Creek Parkway, Castle Rock, CO

- › Remote Server Set-up
- › Implementation
- › Training

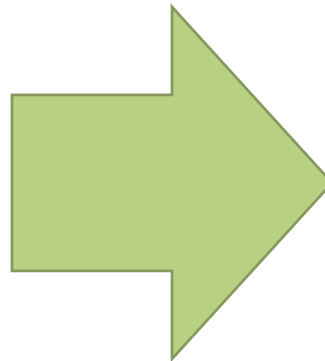


I25/Rio Bravo Interchange Reconstruction



Fitness Tracker for Traffic Signals


High Resolution
Data Collection



Data Analysis and
Performance Report Tools



Value at Any Level

 LEE ENGINEERING		Version #	2			
		.19.2.204_2017_05_31_1545.dat				
		Intersection #	10.19.2.204			
		IP Address:	10.19.2.204			
		MAC Address:	00:04:81:02:8b:ba			
		Controller Data Log Beginning:	5/31/17 3:45 PM			
Time	EventType	Parameter	TimeAsDecimal	EventText	ParameterText	EventGroup
7:01:29 AM	90	8	7.02472	PedDetector On	DET Channel # (1- 16)	Detector
7:01:29 AM	90	8	7.02472	PedDetector On	DET Channel # (1- 16)	Detector
7:01:51 AM	90	8	7.03083	PedDetector On	DET Channel # (1- 16)	Detector
7:01:52 AM	90	8	7.03111	PedDetector On	DET Channel # (1- 16)	Detector
7:02:52 AM	90	6	7.04778	PedDetector On	DET Channel # (1- 16)	Detector
7:02:52 AM	90	6	7.04778	PedDetector On	DET Channel # (1- 16)	Detector
7:02:53 AM	90	6	7.04806	PedDetector On	DET Channel # (1- 16)	Detector
7:02:53 AM	90	6	7.04806	PedDetector On	DET Channel # (1- 16)	Detector
7:02:53 AM	90	6	7.04806	PedDetector On	DET Channel # (1- 16)	Detector
7:02:53 AM	90	6	7.04806	PedDetector On	DET Channel # (1- 16)	Detector
7:03:29 AM	90	6	7.05806	PedDetector On	DET Channel # (1- 16)	Detector
7:03:29 AM	90	6	7.05806	PedDetector On	DET Channel # (1- 16)	Detector
7:03:35 AM	90	8	7.05972	PedDetector On	DET Channel # (1- 16)	Detector
7:04:03 AM	90	6	7.06750	PedDetector On	DET Channel # (1- 16)	Detector
7:04:04 AM	90	6	7.06778	PedDetector On	DET Channel # (1- 16)	Detector
7:04:19 AM	90	6	7.07194	PedDetector On	DET Channel # (1- 16)	Detector
7:04:20 AM	90	6	7.07222	PedDetector On	DET Channel # (1- 16)	Detector
7:04:20 AM	90	6	7.07222	PedDetector On	DET Channel # (1- 16)	Detector
7:06:44 AM	90	8	7.11222	PedDetector On	DET Channel # (1- 16)	Detector

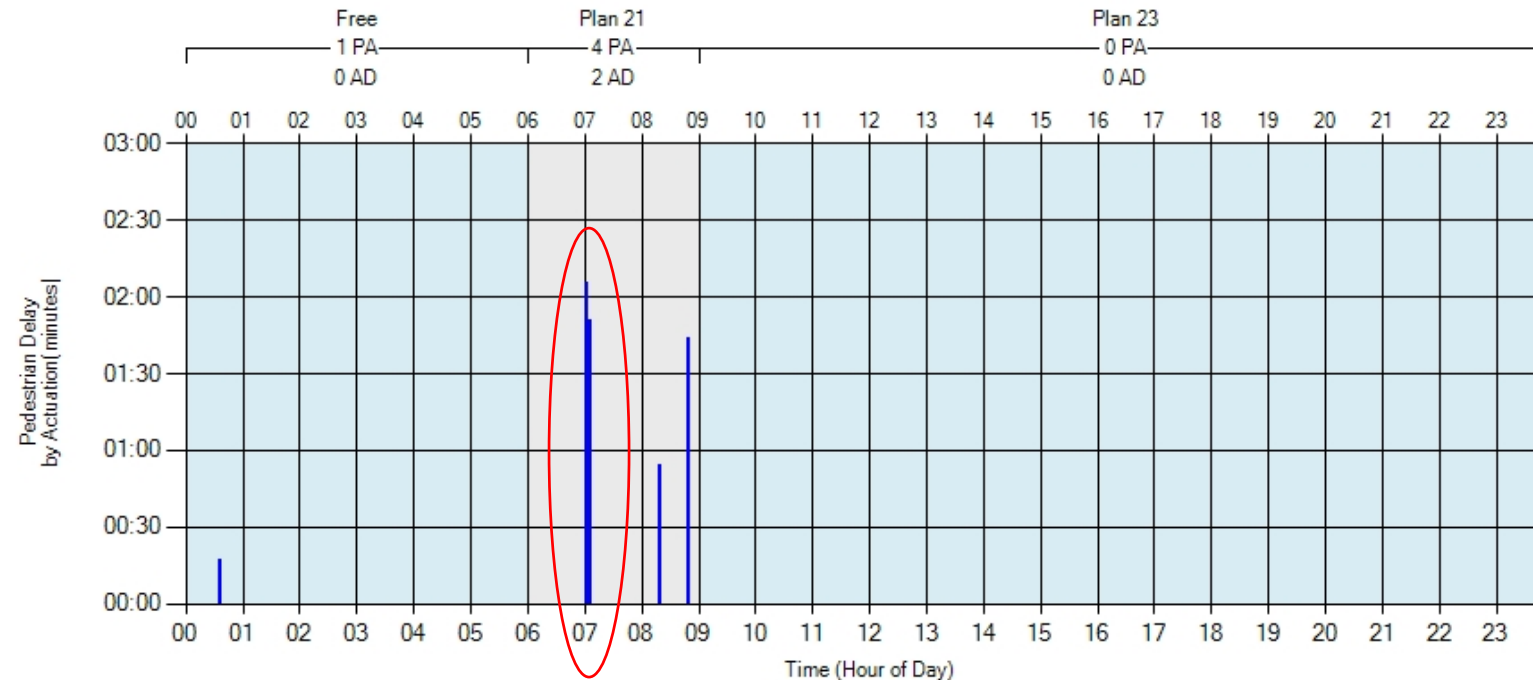


8	Timestamp	Event Type	Parameter	Event Description
186	06/09/2017 7:01:28.7	45	8	Pedestrian Call Registered
312	06/09/2017 7:02:52.0	45	6	Pedestrian Call Registered
475	06/09/2017 7:03:34.6	21	8	Pedestrian Begin Walk
478	06/09/2017 7:03:34.8	45	8	Pedestrian Call Registered
648	06/09/2017 7:04:50.1	21	6	Pedestrian Begin Walk
913	06/09/2017 7:06:44.3	45	8	Pedestrian Call Registered
1137	06/09/2017 7:08:35.2	21	8	Pedestrian Begin Walk

Phase 8

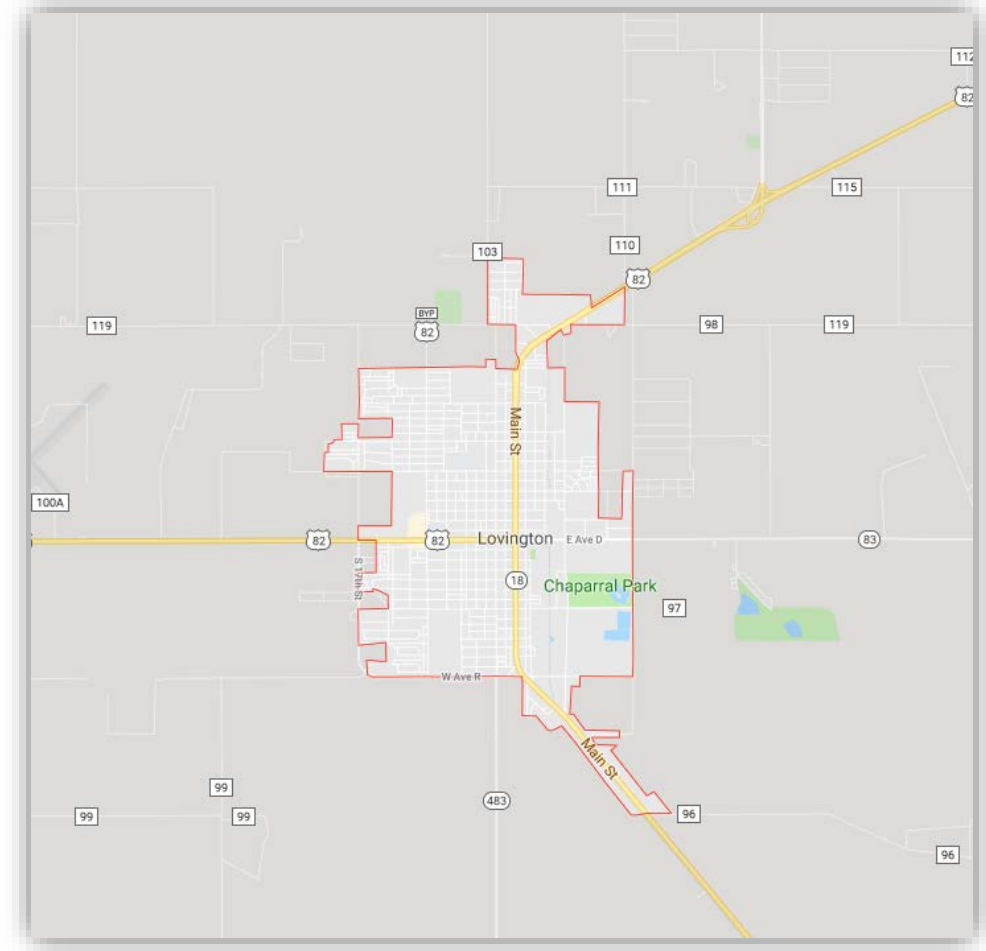
Ped Actuations(PA) = 5; Min Delay = 00:16; Max Delay = 02:05; Average Delay(AD) = 01:22

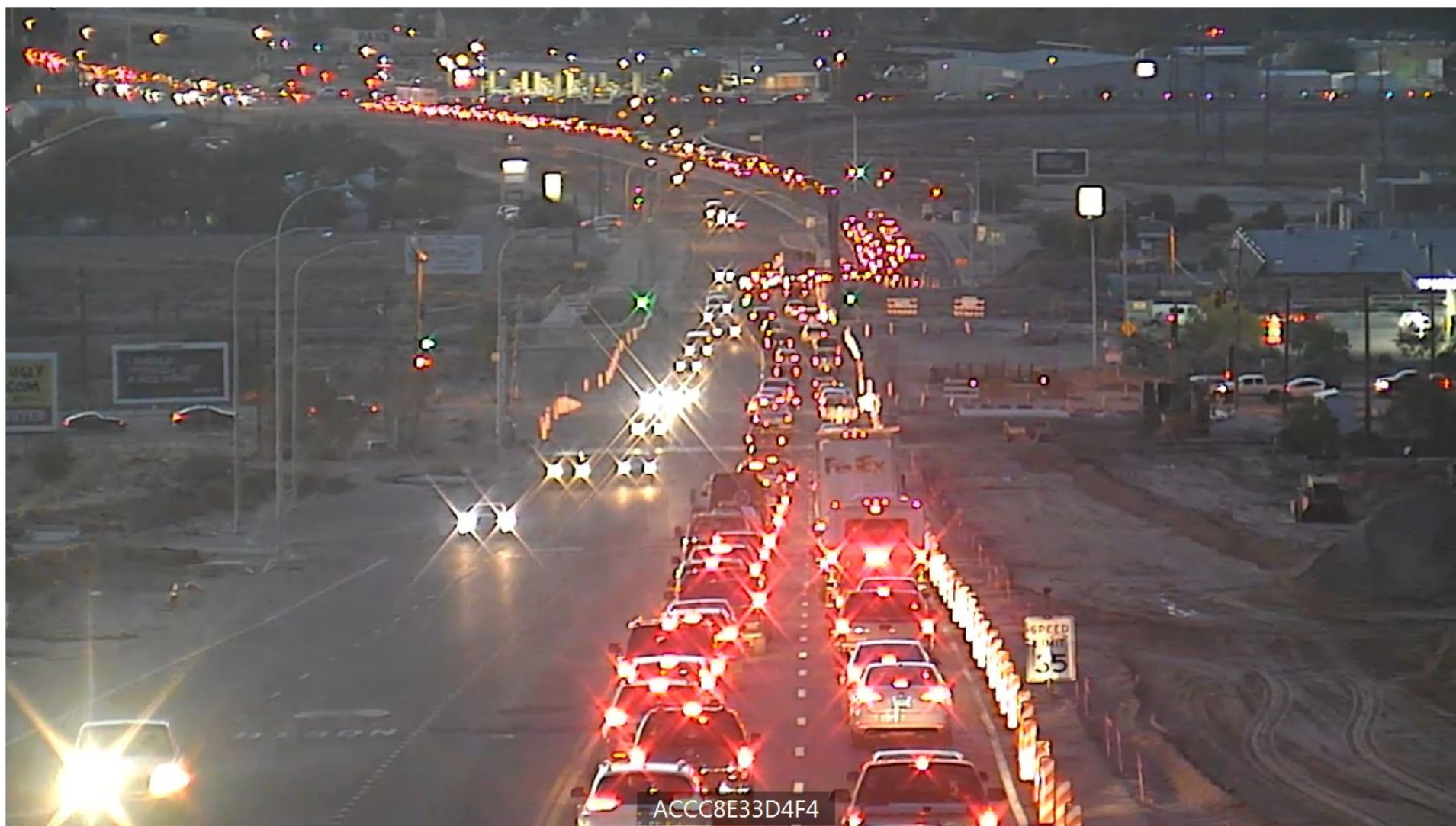
Pedestrian Delay
by Actuation



Rural / Small Community Signal Timing Challenges

- › Staffing
 - Availability
 - Skill set
- › Remote Locations
 - Travel Time Savings
- › Safety
 - Verified Functionality
 - Timely Responses





ACCC8E33D4F4

Solutions

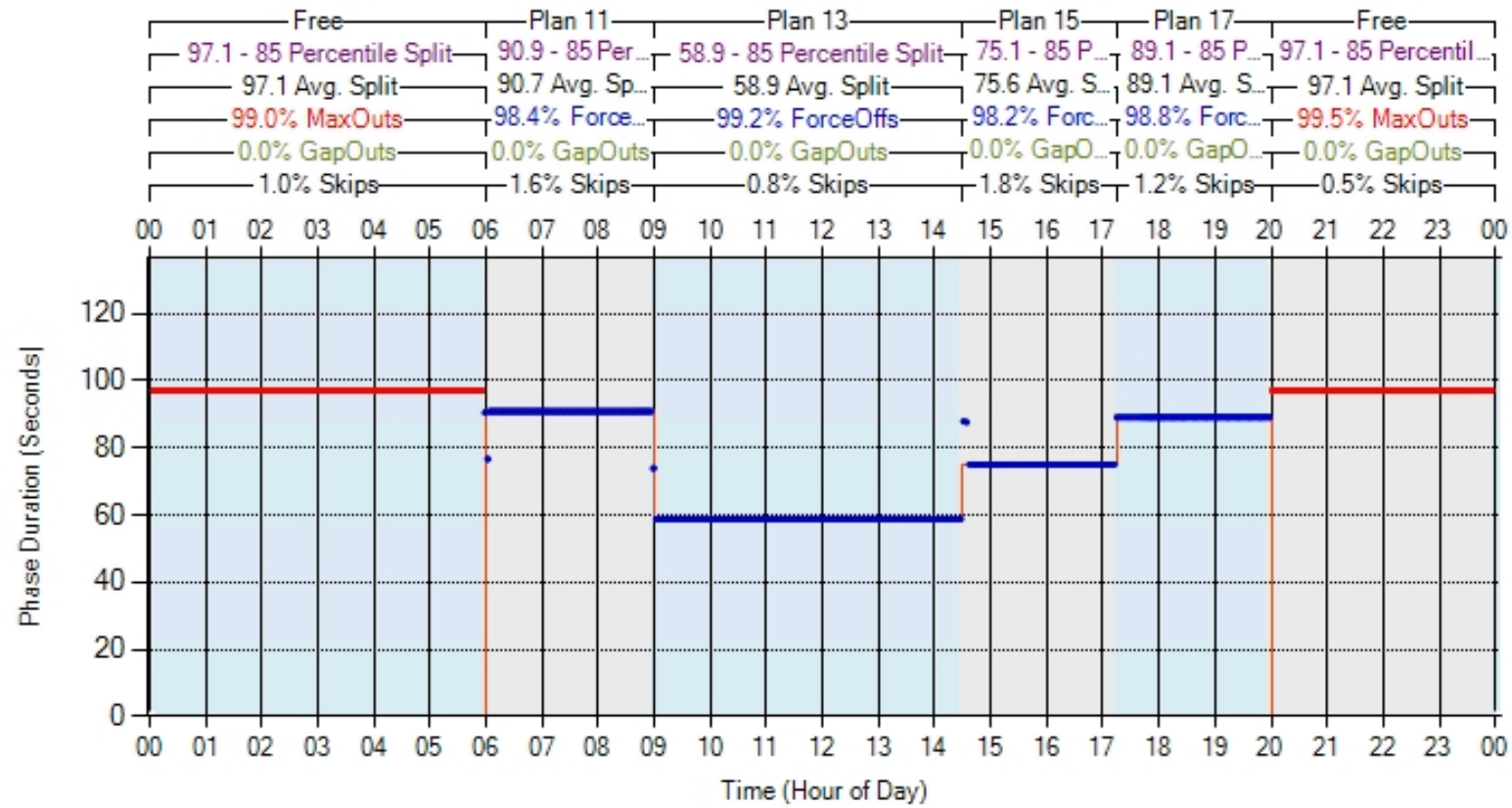
- › Remote Communications
 - CDMA Modems
 - Network Switch
- › CCTVs
 - Repurposed Existing Cameras
 - Early Installs
- › Detection Systems
 - Cameras and Radar

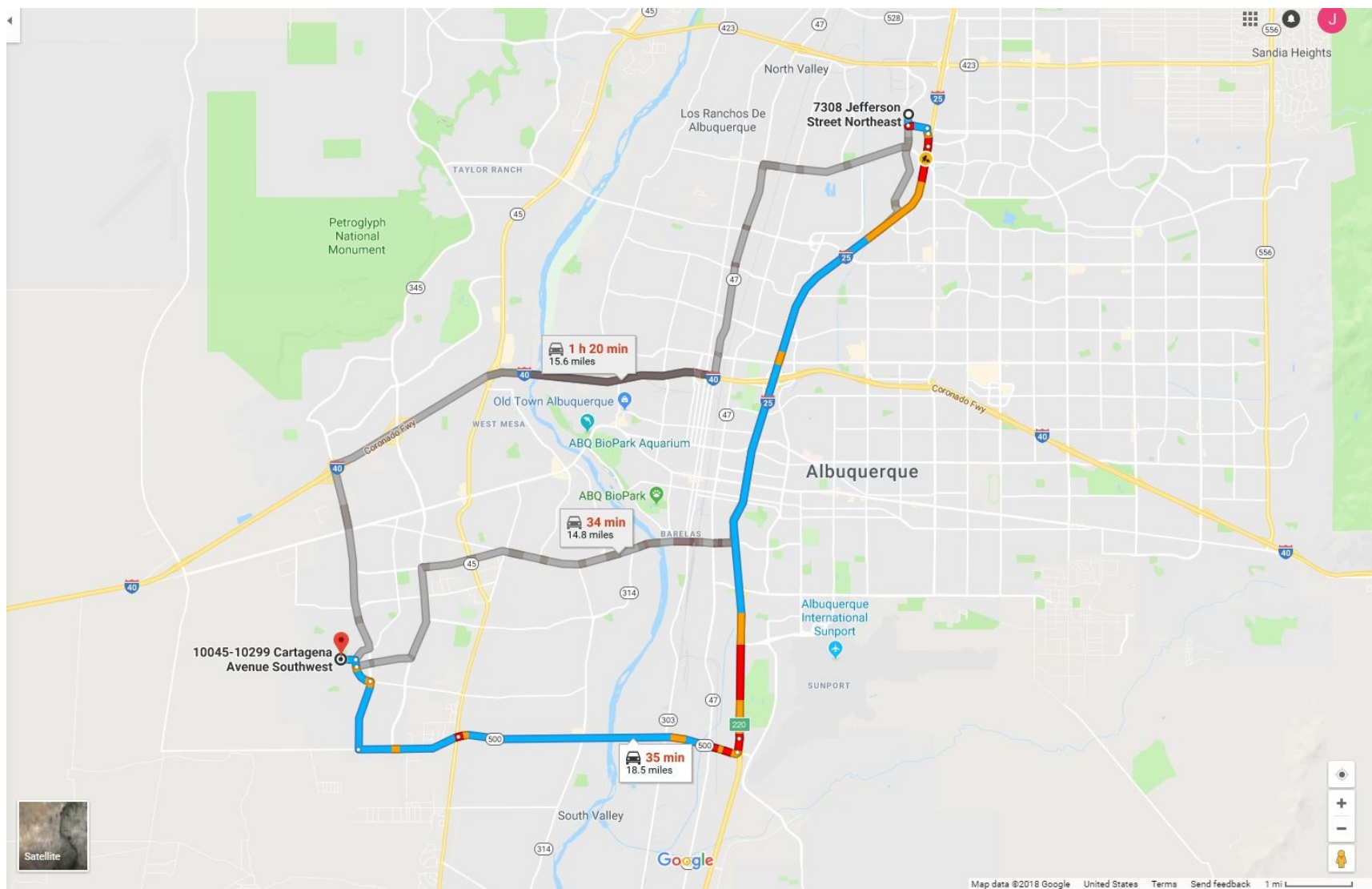


Split Monitor

Rio Bravo @ Broadway - SIG#100
Thursday, March 8, 2018 12:00 AM - Thursday, March 8, 2018 11:59 PM

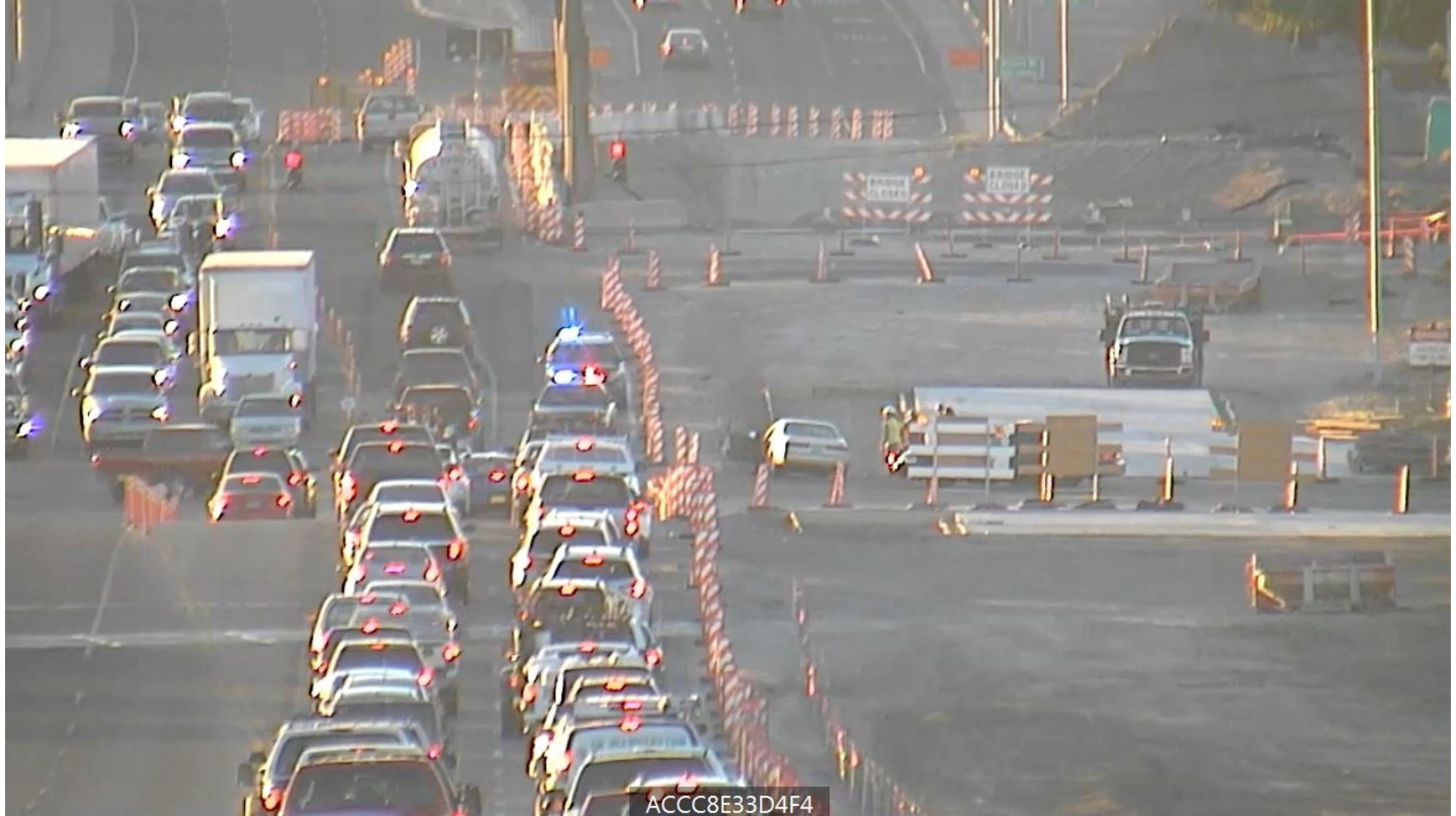
Phase 6













Lessons Learned

- › Procurement Methods
 - Project Specifications
 - Construction Phase Services
- › Contractor Motivations
- › Communications are Essential
 - Active vs Passive FTP
- › Value of ATSPMs are Increased with Accurate Detection

Questions

Paul Barricklow, PE, PTOE
Lee Engineering
pbarricklow@lee-eng.com