

July 23, 2021



The Eastern Transportation Coalition

TSMO & Freight: Working Together for Better Goods Movement

Connecting for Solutions



SO WHO IS THE COALITION?

17 States + D.C. and 190 agencies

40% OF THE U.S. POPULATION

38% OF THE NATION'S JOBS

35% U.S. VEHICLE MILES TRAVELED

21% OF THE U.S. ROAD MILES

Connecting for Solutions

2 TRILLION

IN ANNUAL
DOMESTIC
TRADE

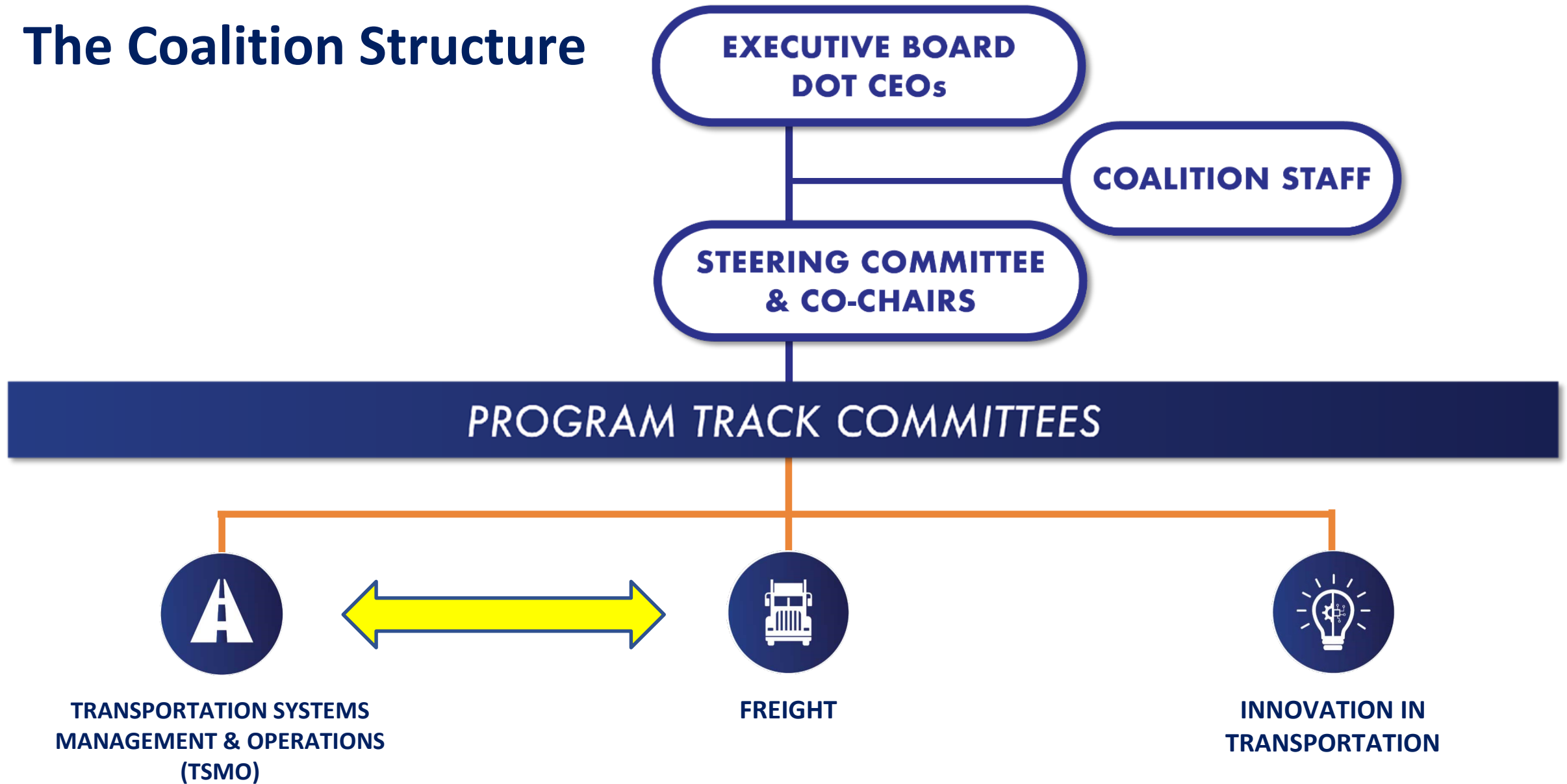
3 RD

LARGEST
ECONOMY
IN THE WORLD

28

MAJOR
SEAPORTS

The Coalition Structure





TSMO & FREIGHT

“Working Together for Safer Goods Movements”

Agenda

Road Congestion and Safety

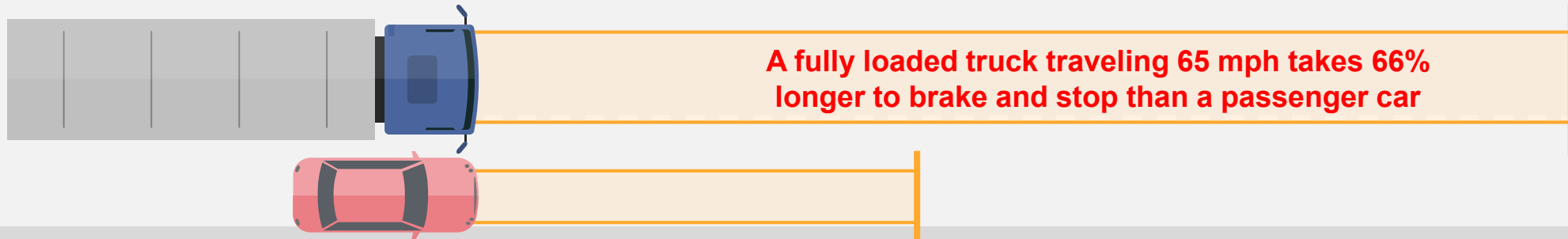
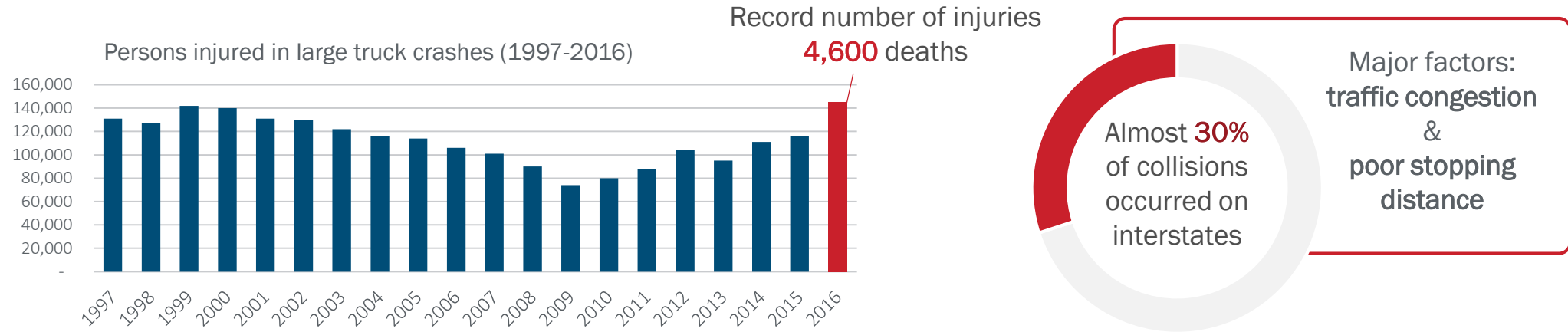
Traveler Information-Getting the Word out to Truckers

- Portals and Third Party Apps
- Work Zones
- Truck Parking
 - Rest Areas
 - Emergency Parking
- Incident Response



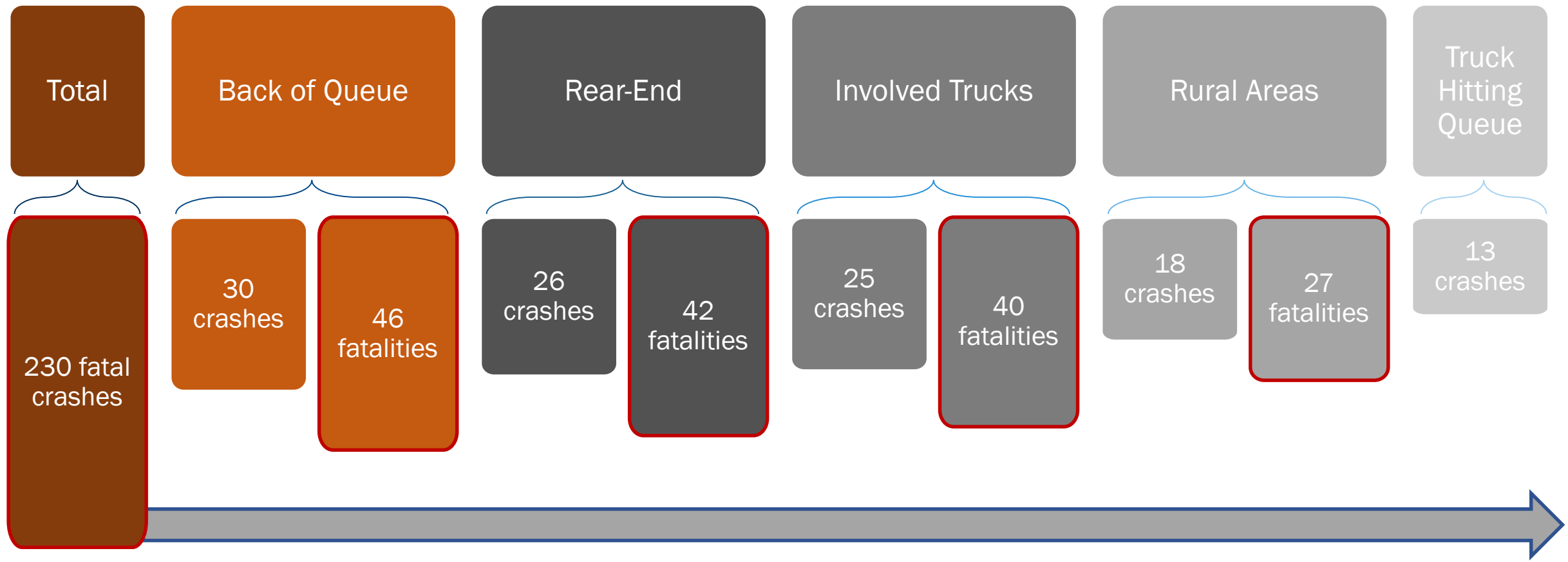
Road Congestion is a Critical Safety Issue

Reducing congestion reduces dangerous and unanticipated slowdowns – and reduces collisions



Interstate Fatalities in Indiana, 2012-2014

- (from Published TRB Paper 16-1194)*



TRAVELER INFORMATION

CALL 511 OR 800-288-1047



TRAVELERS

Traffic events, speeds, cameras, winter road conditions

FULL FEATURED



HIGH-SPEED INTERNET

STREAMLINED



SLOWER INTERNET



TRUCKERS

Trucker-focused traveler information

FULL FEATURED



HIGH-SPEED INTERNET

STREAMLINED



SLOWER INTERNET

TRAVELER INFORMATION – GETTING THE WORD OUT TO TRUCKERS



View **snowplow locations** and **photos** that show real-time road conditions that you may encounter.



Easily view Iowa's traveler information on your **Android** or **iOS** device, by downloading the app.



Get statewide or regional traveler information via social media by following us on **Facebook** or **Twitter**.



waze

Some reports contributed by **Waze**.

What information do truckers want/need?

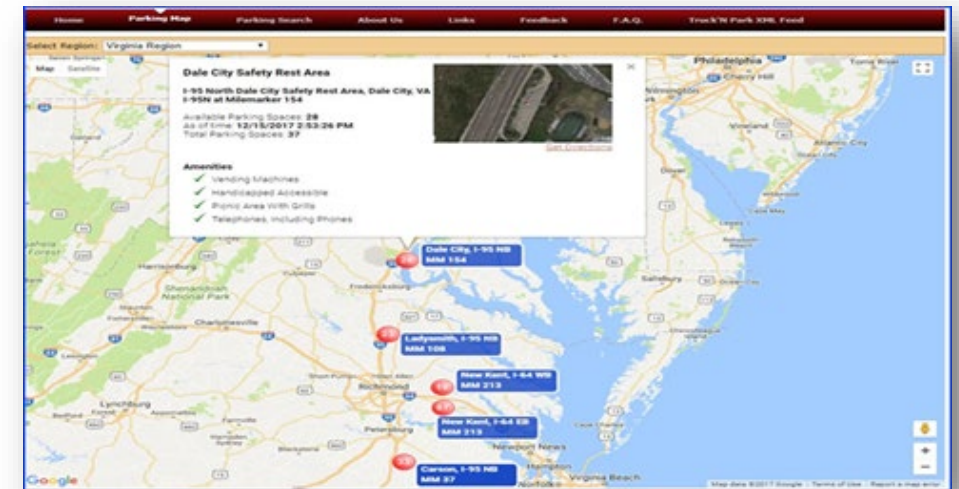
Road conditions:

- ☐ Incidents/delays/closures (including detours, travel times)
- ☐ Construction and work zone locations and status (i.e. active, lane restrictions/shifts, dimensional/weight limitations)
- ☐ Oversize/overweight restrictions
- ☐ Weather/pavement conditions

Weigh station/electronic screening sites

Detour information (must be “truck friendly”)

....and more



How are Truckers getting Information

- ❑ Public Websites/Data Portals
- ❑ Transportation agencies:
 - ❑ 511, Dynamic Message Signs, Website, Email, text alerts
- ❑ Company dispatcher (fleet drivers)
- ❑ Radio (i.e. Sirius, others)
- ❑ Weather services (i.e. NOAA)
- ❑ “Apps” (trucker specific/general apps)



Total Traffic
& Weather Network

Highway Advisory Radio
1640 AM

-- OR --

Turnpike Traffic Channel
on iHeartRadio

URGENT MESSAGE WHEN FLASHING

A screenshot of the Washington State Department of Transportation (WSDOT) website. The page has a green header with the WSDOT logo and name. Below the header, there is a section titled "Email Updates" with a description: "Subscribe to nearly 200 specialized email or text alerts from WSDOT to help you know before you go. Receive current traffic conditions, mountain pass reports, construction updates and more." Below this, there is a form with a "Subscription Type" dropdown menu set to "Email", an "E-mail Address" field with a red asterisk indicating it is required, and "GO" and "CANCEL" buttons at the bottom.

TETC Commercial Vehicle Portal

<https://i95coalition.org/commercial-vehicle-operations-online-portal/>



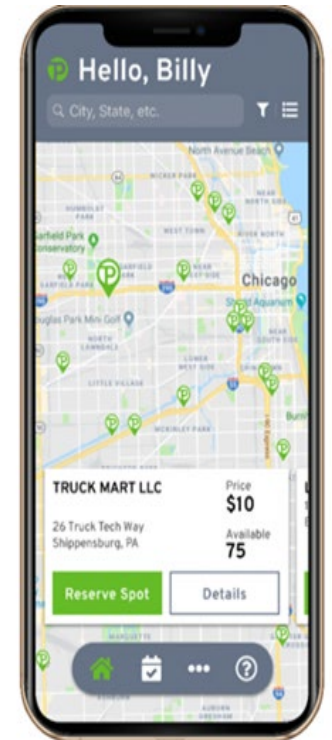
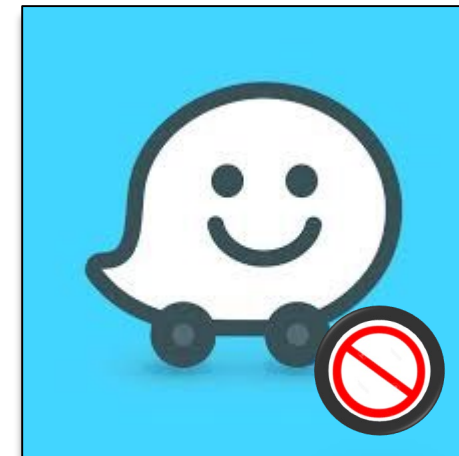
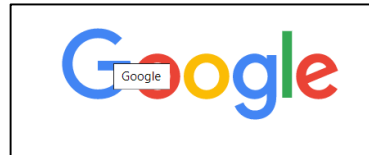
5 BILLION

TONS OF FREIGHT

Almost 40% of America's
GDP passes through the
Corridor



Third Party Providers



The Value of a Timely Alert

WITHOUT ALERT

Driver, now in a more dangerous scenario, has less time to react

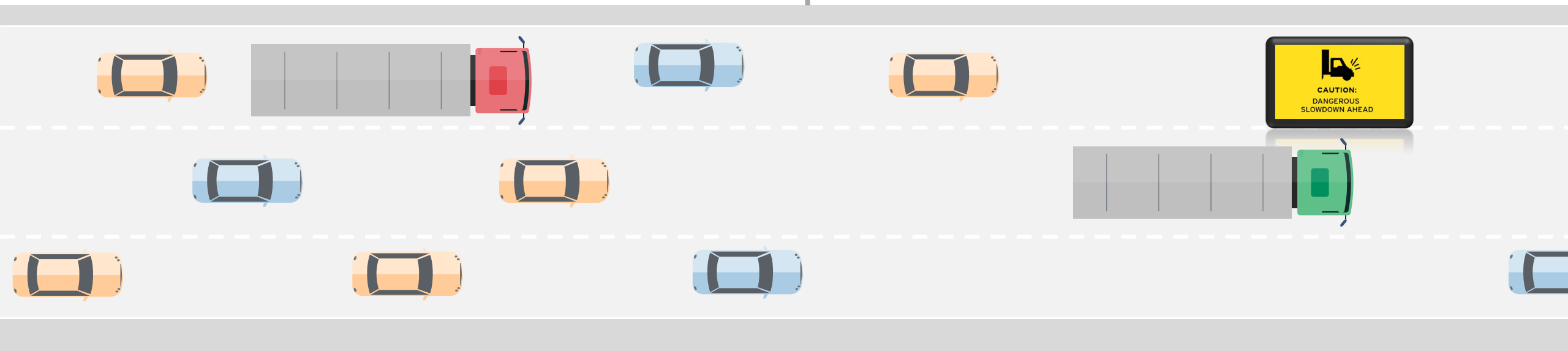
In a more congested scenario the driver has fewer safe options available to them

VS

WITH PROACTIVE/REAL-TIME ALERT

Driver is in a safer scenario and has more time to react

With a proactive alert, the driver has time to adjust while it is still safe to do so



By slowing down, a truck is also slowing down traffic around it

INRIX and Drivewyze Partnering to Reduce Truck Collisions

Unmatched Data, Unmatched Reach...

Real-time monitoring of nationwide road network
Detects and characterizes closures, queues, and slowdowns
Updates every minute, including location and severity

Road Closures

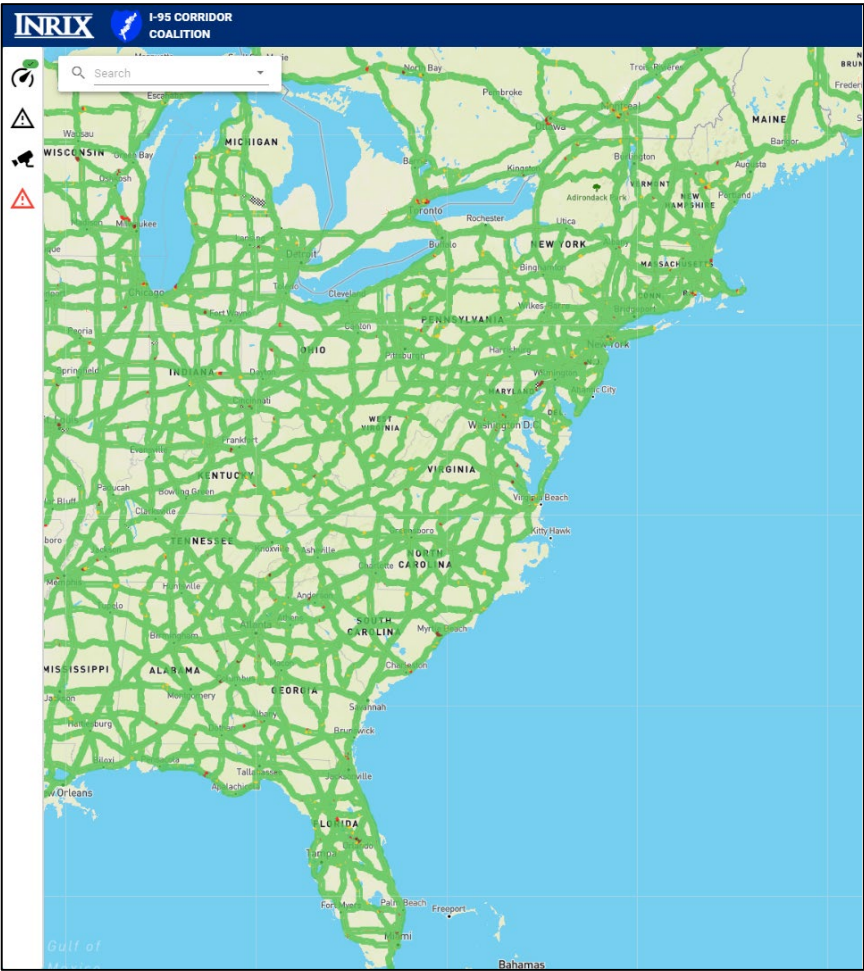
| | |
|-------------|--|
| Description | Road closed due to accident on I-95 Southbound between Exits 100,100B-A MD-272 and Exit 93 MD-222-TRUCK. |
| Where | Southbound I-95 between I-95 Exits 100,100B-A / MD-272 / MD-272 North East Rd and I-95 Exit 93 / MD-222-TRUCK / MD-275 |
| Status | active |
| When | 2020-06-01 3:10 pm - 2020-06-01 4:39 pm |

Congestion/Queues

| | |
|-------------------|---|
| Description | Severe delays of ten minutes and delays increasing on I-90 Westbound in West Brimfield. Average speed 15 mph. |
| Where | Westbound I-90 between I-90 Exit 9 / I-84 and I-90 |
| Status | active |
| When | 2020-06-01 2:06 pm - 2020-06-01 5:08 pm |
| Length | 3.70 Miles |
| Delay from Normal | 10.00 minutes |

Slowdowns

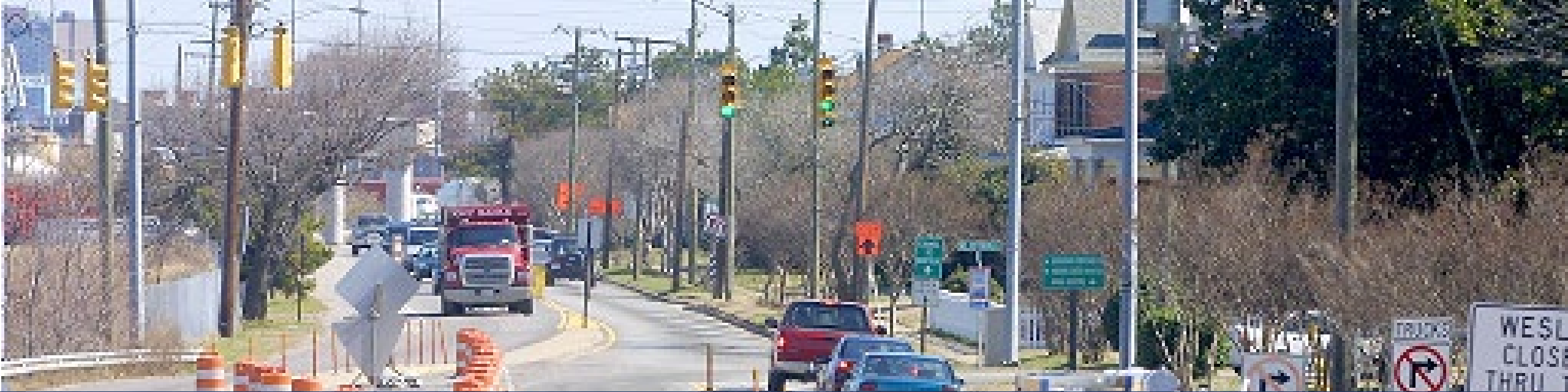
| | |
|--------------------|---------------------|
| Dangerous Slowdown | |
| ID | 10212266 1386692759 |
| Where | I-85 |
| Severity | High Impact |
| Delta | 47 mph |
| Speed At | 19 mph |
| Start | 2020-06-01 4:26 pm |



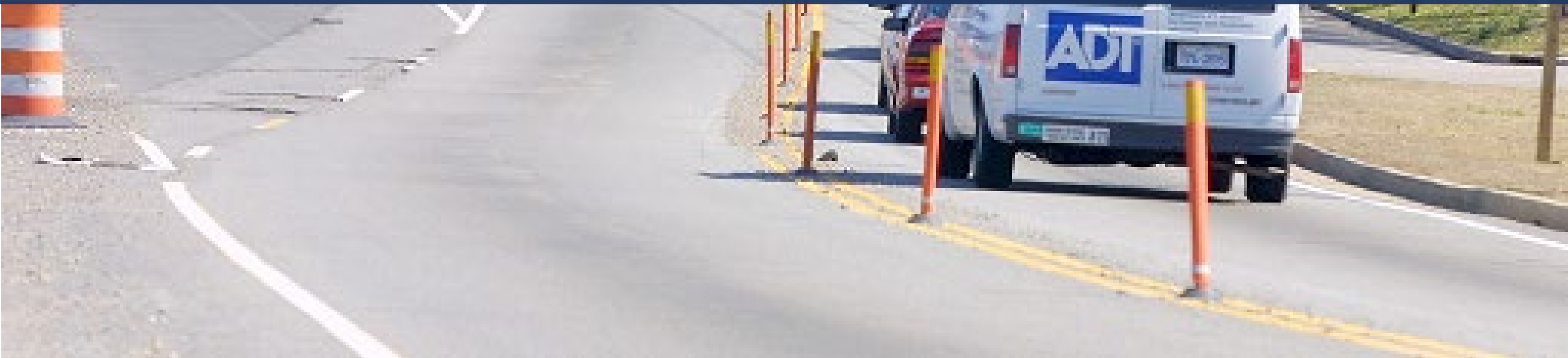
Recommendations

- ❑ Provide BETTER information to Truckers
- ❑ Improve on providing timely notifications
- ❑ Work with Trucking App providers to determine what they really need and in what format
- ❑ Work to define common data source formatting amongst trucking app providers





Work Zones



Work Zone Challenges

- ☐ Restriction Information is needed
 - ☐ (Width, Height, Weight)
- ☐ Detours and Alternate Routing
- ☐ Back of Queue Notifications
- ☐ Just in Time Delivery is endangered by Road Congestion
- ☐ WZDX





TRUCK PARKING “FINDING SAFE PLACES TO PARK AND REST”





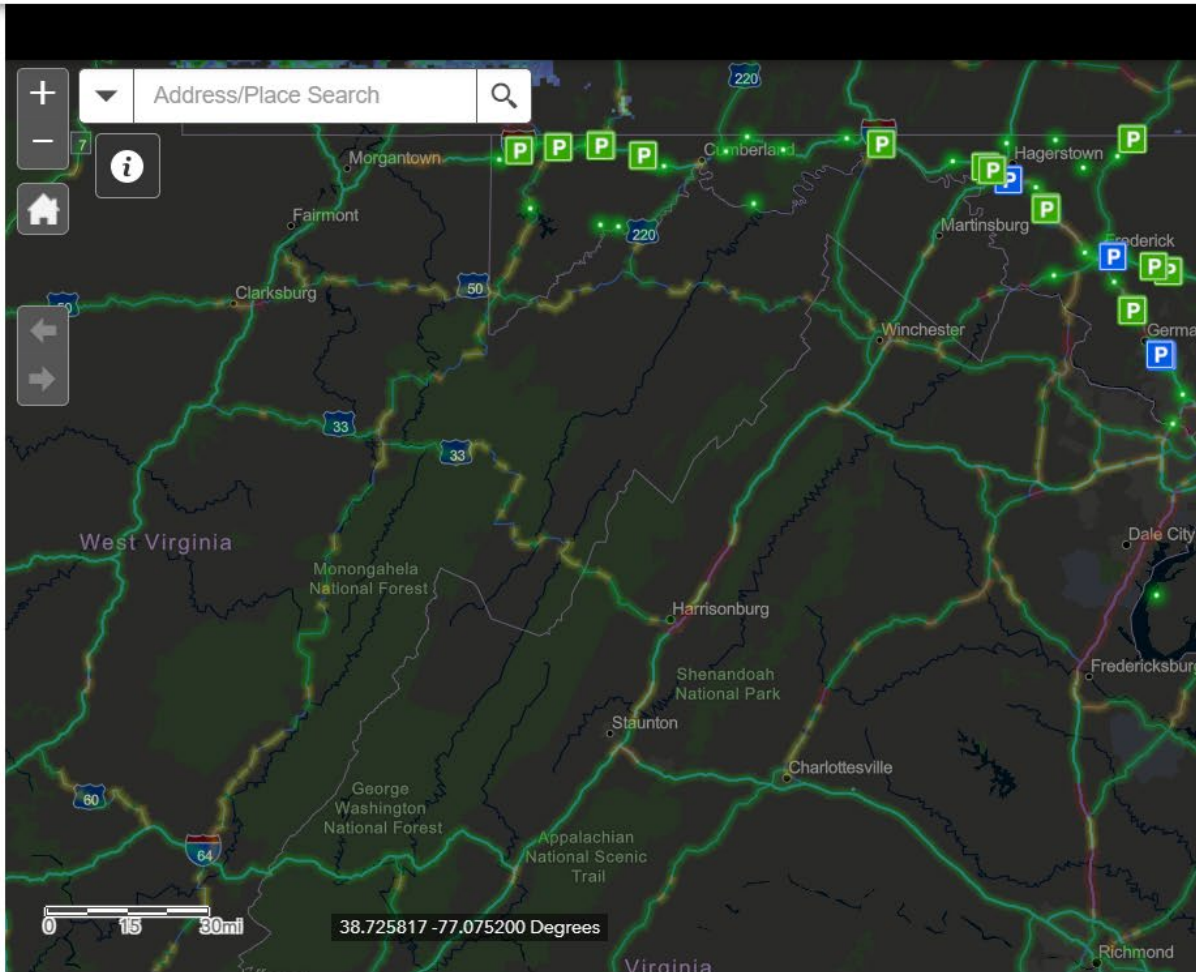
Truck in Decel/Entrance Lane



Trucks in hatched no parking area



Trucks in signed no parking area



Overview



Maryland Emergency Truck Parking Locations

During 6+ inch snow storms, tractor trailer drivers may use several commuter park and ride lots for safe haven to ride out the storm instead of parking on ramps and roadsides. This initiative provides an alternative for truckers traveling during heavy storms. **Green Parking symbols represent Regular Truck Parking** and the **Blue Parking symbols represent Emergency Truck Parking** at park and rides lots for potential parking during storms.

Where am I going to park during this severe weather?



Reserved Parking – The future of truck parking?



Reserved Truck Parking - Issues to consider

- ❑ Does continued expansion of parking spaces available as reserved (“pay to park”) locations add to capacity?
- ❑ Does additional private sector capacity diminish the public sector role in providing truck parking?
 - ❑ Is the issue left to private sector?
 - ❑ Can “business model” be built into local land use/commercial development?
- ❑ Where does industry stand on this
 - ❑ What is the “data” on trucker willingness to pay for parking?
- ❑ Are there safety implications?
 - ❑ Given most drivers do not get paid to park, could reserved (“pay to park”) take \$ from other places (i.e., vehicle maintenance?)

Recommendations

- ❑ We all agree that with the proliferation of the movement of goods, access to safe truck parking is becoming an essential function.
- ❑ More dialogue is needed about how to provide safe Truck Parking whether through the public or private sector.
- ❑ There is a need to provide real time emergency parking locations especially in severe weather.
- ❑ Like traveler information to truckers, we need to work with Truck Parking App providers to determine what they really need and in what format





Incident Management





Recommendations

- ❑ Continue to work train our agency stakeholders (Incident Responders – Police & Fire)
- ❑ Hold in person tabletops – now that we can
 - ❑ Continue the National TIM Training
- ❑ Engage Towing and bring Tow-ers to the training table
 - ❑ Look at Rotational Lists
 - ❑ Certifications
 - ❑ Training



In Summary – Coalition focus areas include



Traveler Information for Trucks



Truck Parking



Incident Management Training

TRUCKERS

Trucker-focused traveler information

FULL FEATURED



HIGH-SPEED INTERNET

Highlights weigh station locations and restrictions

STREAMLINED



SLOWER INTERNET

Uses static maps for faster loading

511 ON THE GO

Easily view Iowa's traveler information on your **Android** or **iOS** device, by downloading the app.



— THE EASTERN
TRANSPORTATION
COALITION



THANK YOU!



Denise Markow, TSMO Director

dmarkow@tetcoalition.org

www.tetcoalition.org