

Intelligent Transportation Systems in National Parks & DOI Public Lands

Michael Clark
David Jackson

August 29, 2011

John A. Volpe National Transportation Systems Center
Research and Innovative Technology Administration
U.S. Department of Transportation



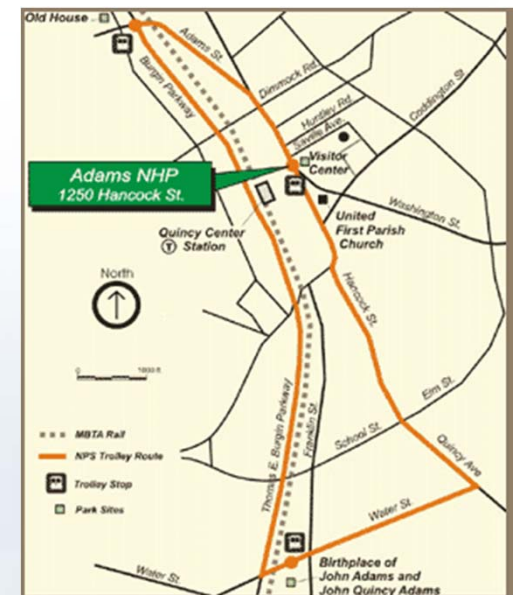
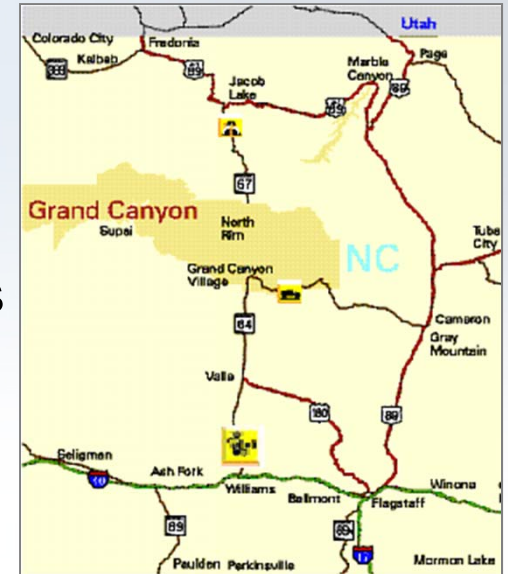
Presentation Overview

1. Report Purpose and Procedure
2. Report Findings
3. Potential Action Items



Public lands units involve intelligent transportation systems (ITS) to:

- Help visitors make travel plans
- Facilitate visitor use of alternative transportation systems
- Alleviate entrance station and parking congestion
- Alert visitors to traffic situations and incidents
- Monitor and manage park traffic and transit operations

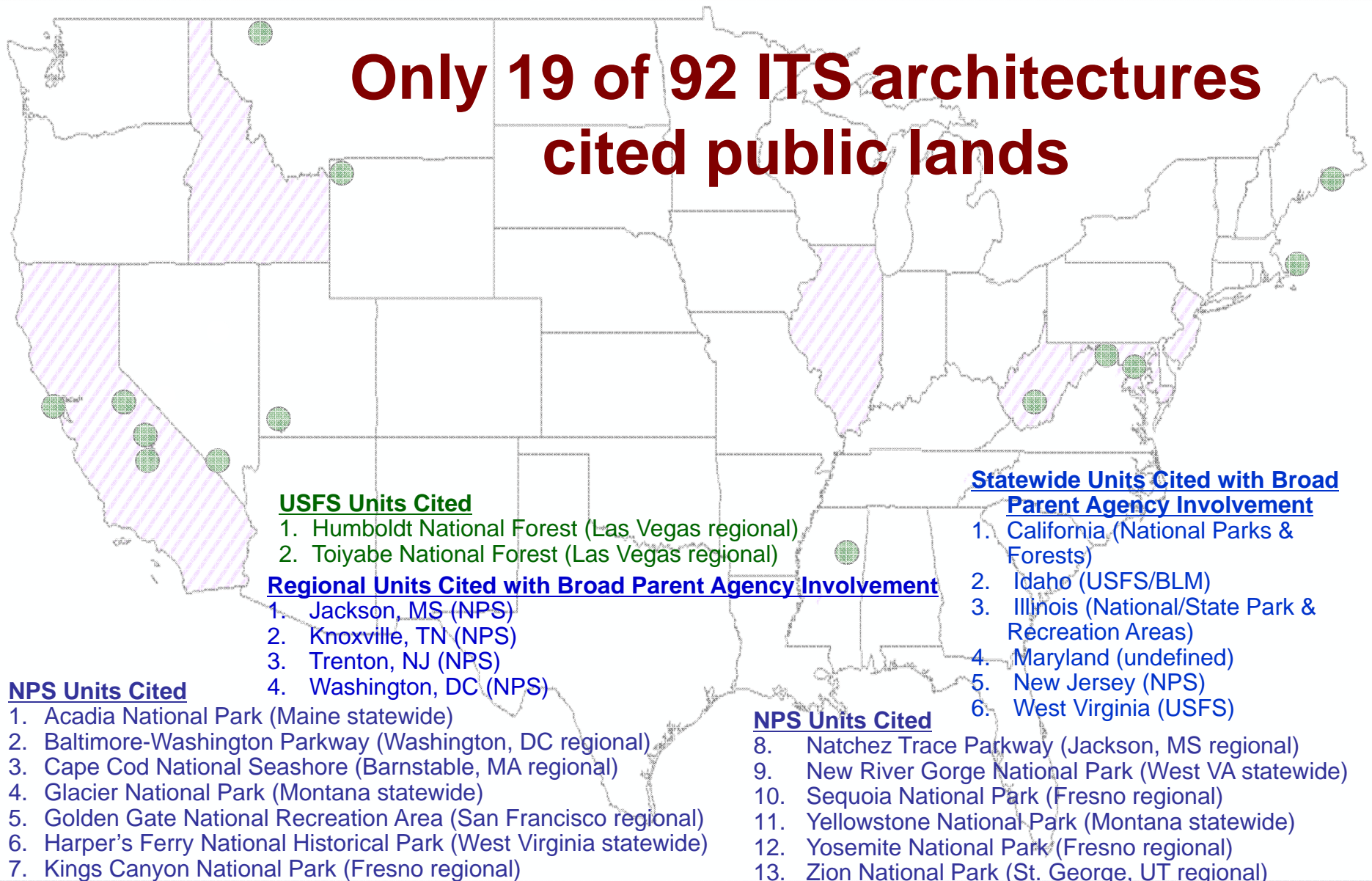


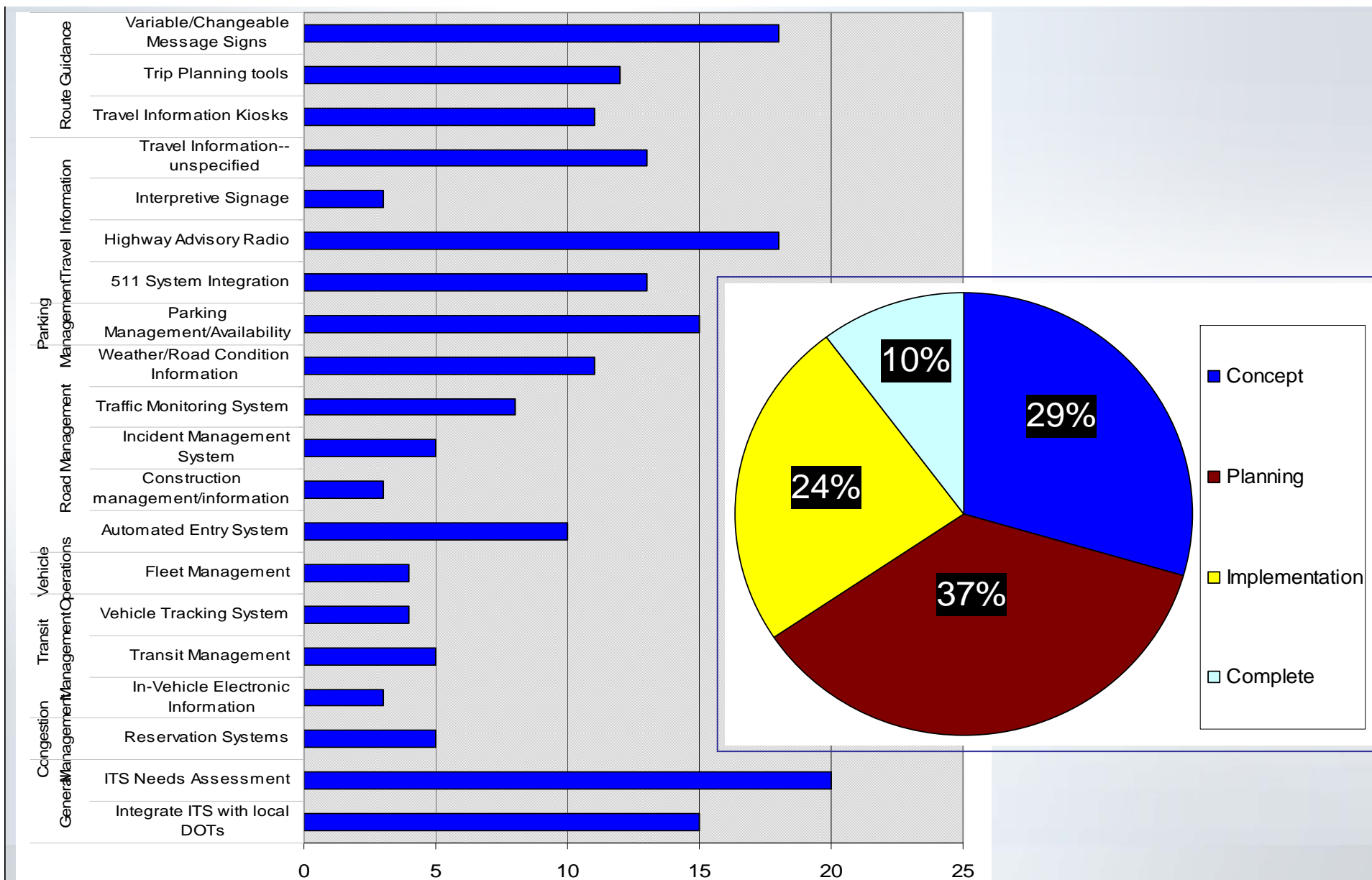
Report Purpose

- Update 2005 inventory of ITS deployments on public lands
- Reviewed ITS architectures and other related material
- Identify costs & benefits of ITS to public land units
 - Interview PL Units with ITS involvement



Only 19 of 92 ITS architectures cited public lands





Park Units Interviewed

1. Gateway NRA
2. Acadia NP
3. Shenandoah NP
4. Great Smoky Mountains NP
5. Grand Teton NP
6. Golden Gate NRA
7. Yosemite NP
8. Arches NP
9. Humboldt-Toiyabe NF
10. Mount Rainier NP
11. Grand Canyon NP
12. Zion NP
13. Yellowstone NP
14. Bryce Canyon NP

- Conversations carried out throughout fall 2010



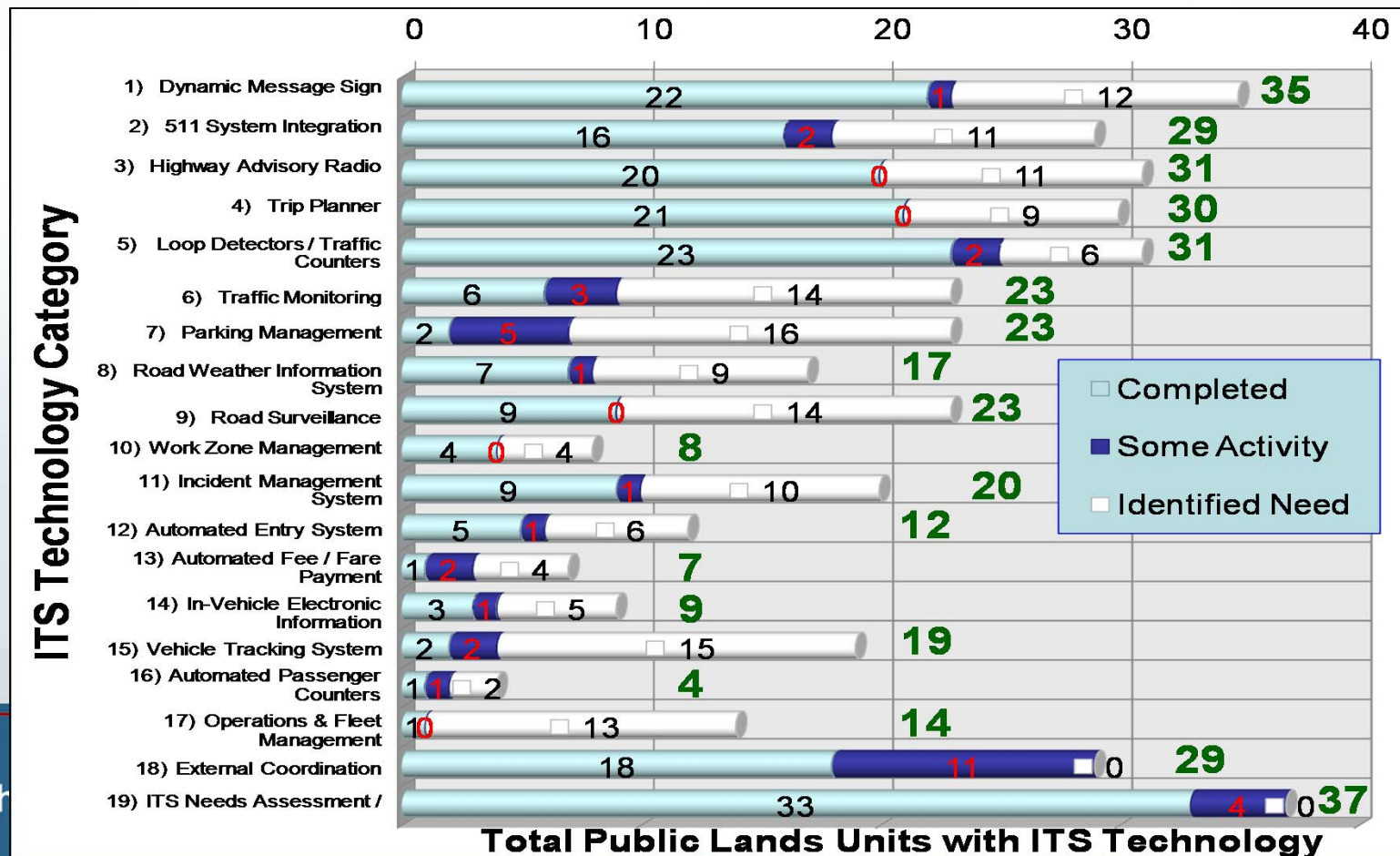
Presentation Overview

1. Report Purpose and Procedure
2. Report Findings
3. Potential Action Items



Overview of Current Status

- Little expansion of ITS technologies in recent years
 - Systems with greatest utility continue to grow
 - Costs of more complex systems outweigh benefits
 - Units desire technologies which are easier to manage



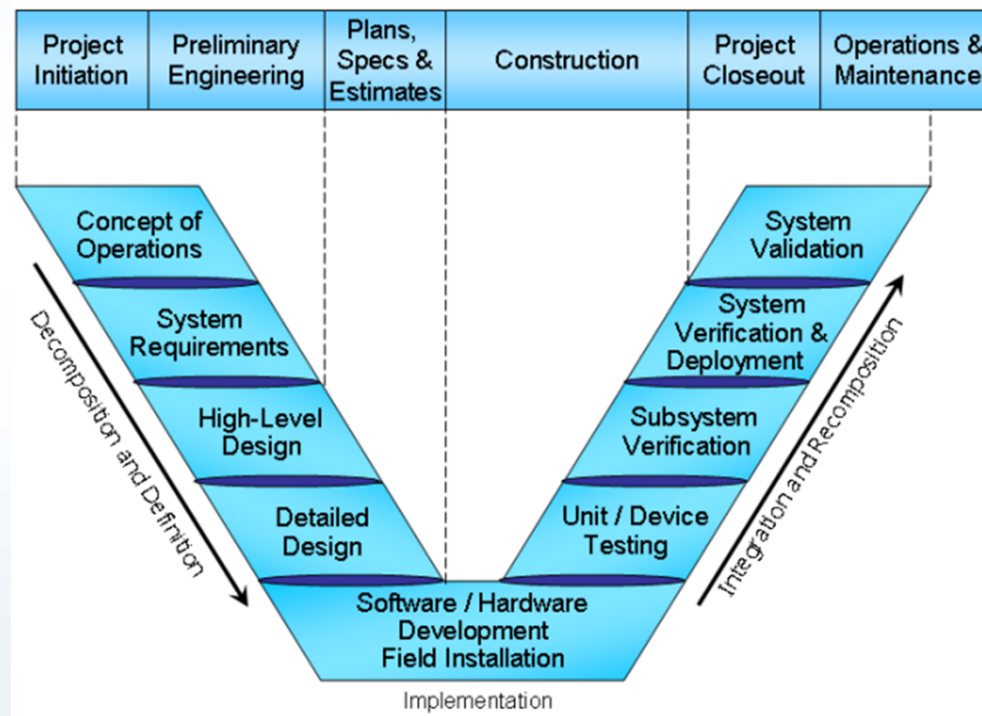
Approaches to ITS Among Units

- Small-scale solutions offer most utility to units
 - Straightforward and cost-effective
 - Examples include dynamic message signs (DMS) and traffic counters
- Outside contractors can assist with deployment and ongoing operation



Approaches to ITS Among Units

- Systems engineering processes ensure projects are carried forward most efficiently



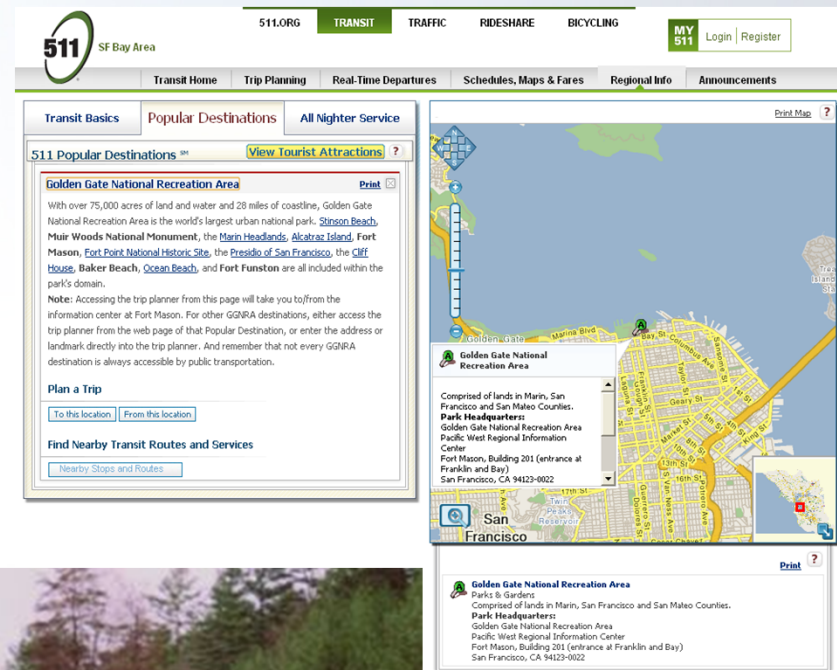
Approaches to ITS Among Units

- Transportation issues may be tolerable when ITS interventions are costly and complex



Technologies with Most Utility

- Dynamic message signs
- Highway advisory radio
- 511 traveler information systems
- Traffic counters and loop detectors
- Social media applications



Social Media Applications

- Permit units to share interpretive and traveler-related information to visitors at off-site locations
 - Traffic delays
 - Detours
 - Alternative transportation options
 - Parking information
- Valuable if information needed on short notice
 - Mobile devices increasingly used for social networking
- Staff and expertise issues among units
 - Some lean on friends groups for social media presence



Social Media Applications

Glacier



Wall

Info

Photos

Video

Discussions

Notes

About

Welcome to the official Facebook page for Glacier National Park. This page...

More

81,664
people like this

Likes

See All

Arches National Park

Florissant Fossil Beds National Monument

Sagamore Hill National Historic Site

Delaware Water Gap National Recreation Area

Cabrillo National Monument

Glacier National Park Like

Government Organization · West Glacier, Montana



Wall

Glacier National Park · Most Recent

Glacier National Park

First raw video footage of the snow at Logan Pass. Amazing amount of snow for this time in July. (bh)



Jul 13, 2011 6:17pm
Length: 0:26

17 hours ago · Share

204 people like this.

View all 28 comments

Kelly Frost-sineni let it snow let it snow let it snow
12 hours ago

Gail Stone Streich Lucky us .. we don't live that far away (Great Falls, MT) so we made the trip up there today. AWESOME AWESOME AWESOME! Mostly blue skies with some clouds, even the long-ish waits during construction were awesome views and friendly tourists. My favorite place in the whole world.
12 hours ago · 1 person

Glacier National Park added 3 new photos to the album 2011 Photos.



2011 Photos

17 hours ago · Share

4,951 people like this.

View all 589 comments

Saint-Gaudens National Historic Site

Venues

Users select a venue at the park by simply tapping a designated number tab. They can view the entire park from the aerial view in the palm of their hand, choosing the path that appeals most to them.

SaguaroNPS SaguaroNationalPark

Due to the fire danger, the high-country trails and sites in the Rincon District will be closed. However, the... <http://fb.me/WfQan3VL>

6 Jun

Social Media Applications



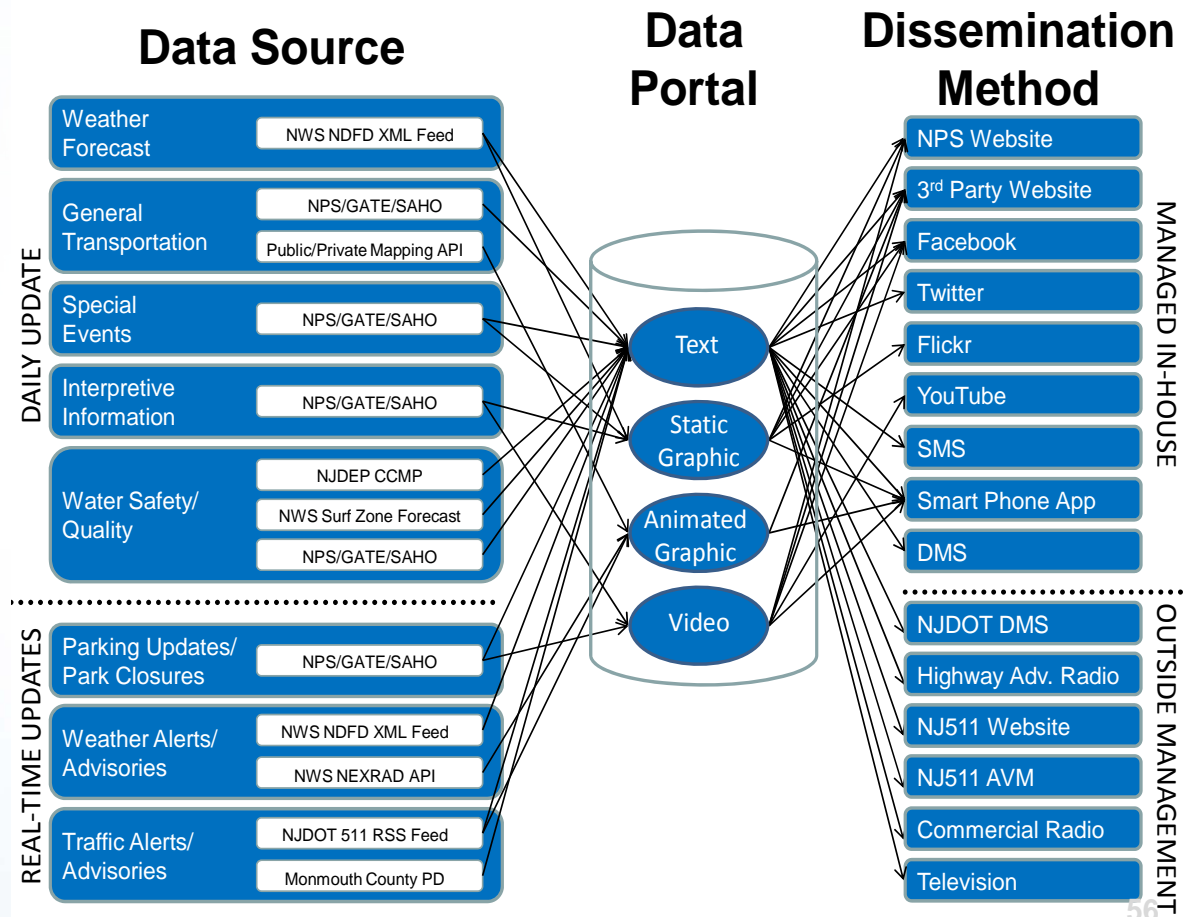
Common Issues of ITS Technologies

- Power and connectivity issues plague successful operation of many ITS technologies
 - Lack of infrastructure due to rural setting of many units
 - Poor climate conditions
 - Rugged terrain
- Many technologies require manual input from staff



Common Issues of ITS Technologies

- Advanced traveler information systems (ATIS) offer opportunities to efficiently distribute time-sensitive information without tying up staff



Presentation Overview

1. Report Purpose and Procedure
2. Report Findings
3. Potential Action Items



Potential Action Items

- ITS strategic plan to enable
 - Systematic planning
 - Procurements
 - Implementation
 - Operation
 - Maintenance
 - Evaluation
- Would allow FLMAs to focus on those technologies that produce the greatest results for individual units and regions



Potential Action Items

- Efforts needed to improve procurement processes
 - Coordinate multi-device procurement
 - Utilizing GSA-approved product lists
- Offer more training opportunities to public lands staff
 - Professional capacity building
 - Peer exchanges



Intelligent Transportation Systems in National Parks & DOI Public Lands

Michael Clark
David Jackson

August 29, 2011

John A. Volpe National Transportation Systems Center
Research and Innovative Technology Administration
U.S. Department of Transportation

