



Bringing Vital CVO Information to San Diego and Imperial Counties' Truckers

Session D2: CVO – Keeping Freight Moving

2011 National Rural ITS Conference

August 28-31, 2011

Coeur d'Alene, Idaho

Tracy Manzo



ChevalResearch Inc

Lisa Nelson



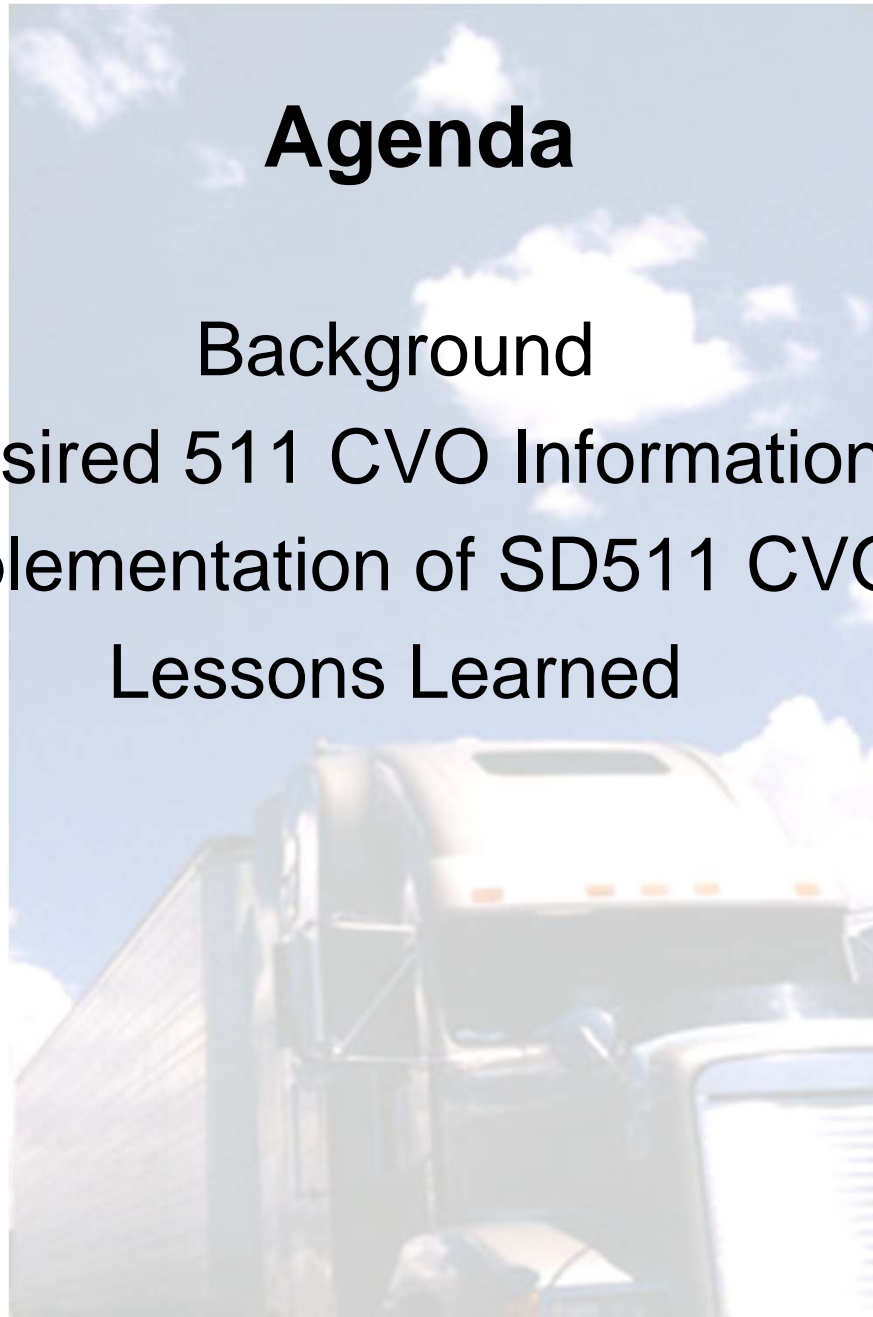
Agenda

Background

Desired 511 CVO Information

Implementation of SD511 CVO

Lessons Learned



Background



Project Purpose

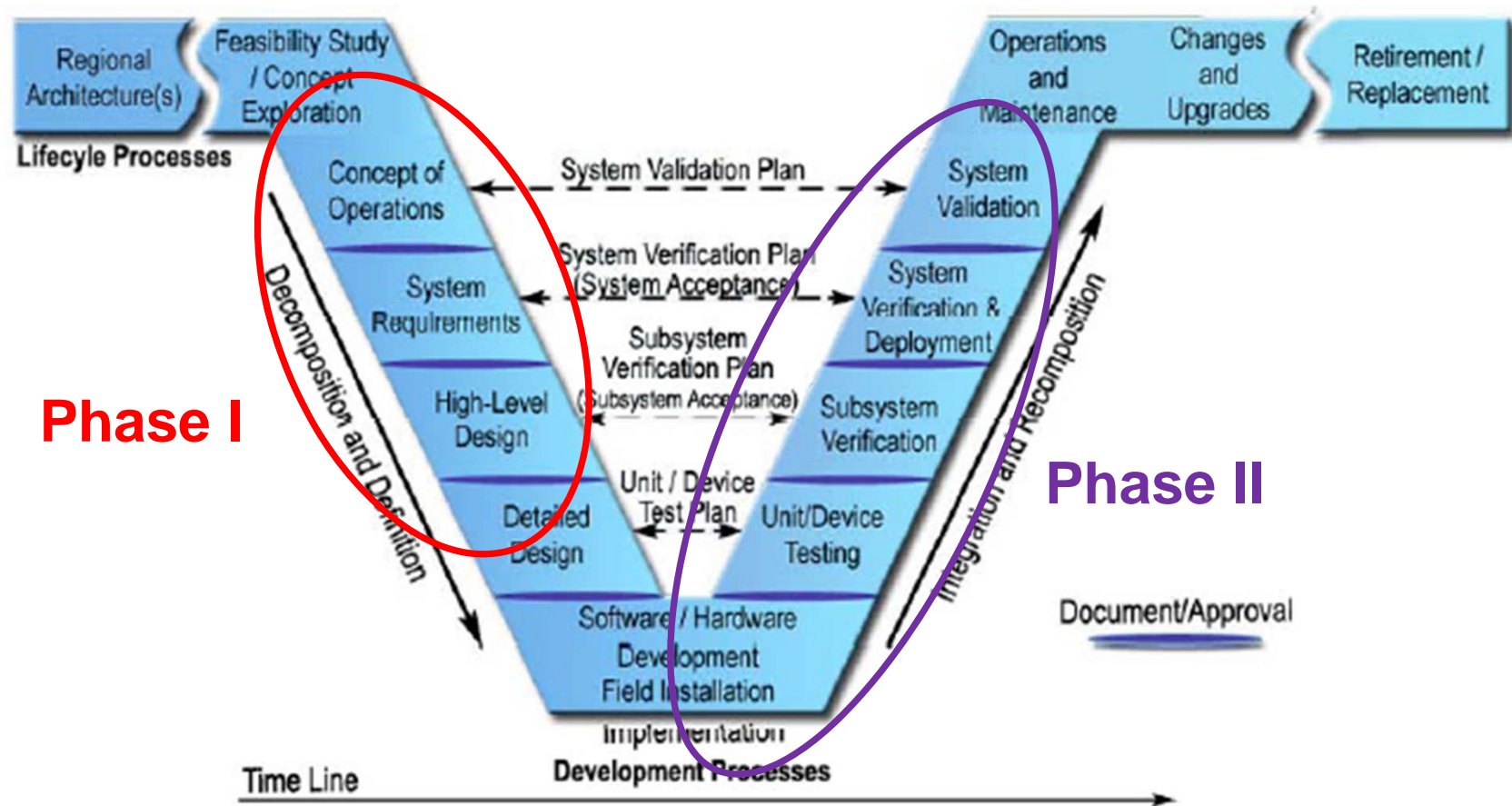
- Develop, integrate and deploy new services just for truckers on the existing San Diego/Imperial County 511 system.



Stakeholders

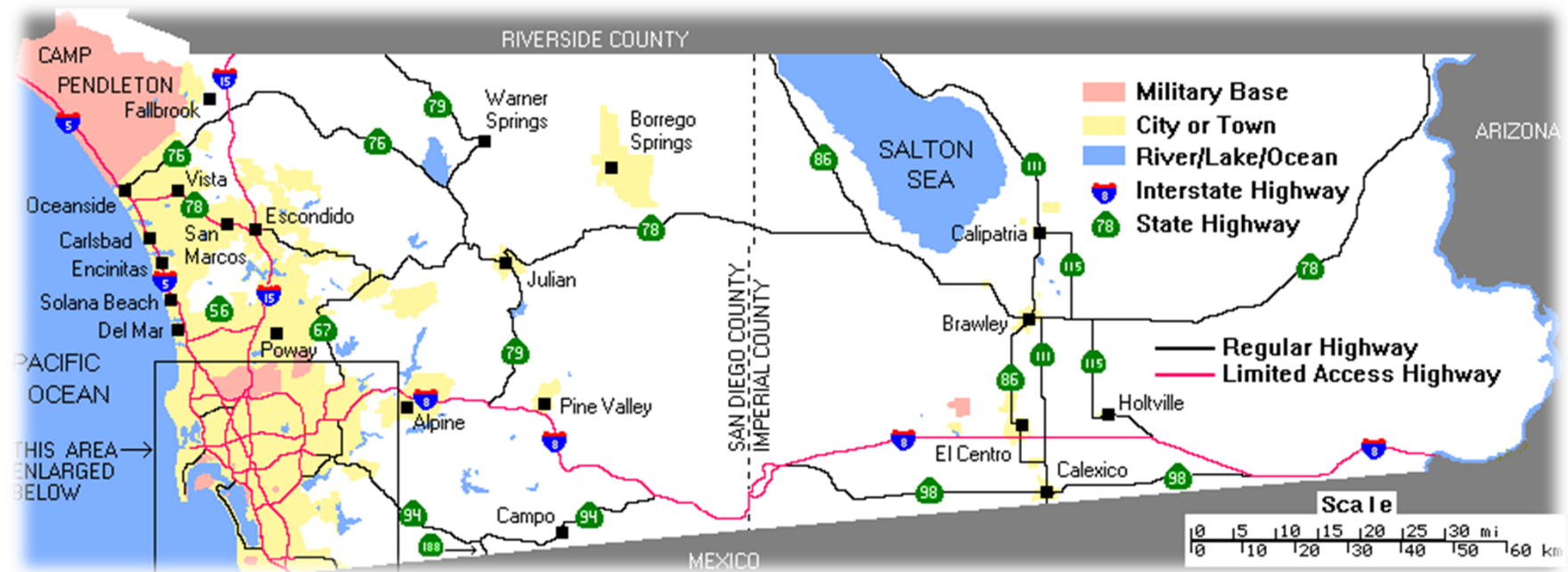


System Planning & Development Process



Obligatory V Diagram

511 Service Area



Source: www.efgh.com/trans/sdimp.htm

Connecting with the trucking community

- Literature
 - On-line survey
 - Intercept surveys
 - Interviews & Stakeholder Group Meetings
-
- ```
graph LR; A["Literature
On-line survey
Intercept surveys
Interviews & Stakeholder Group Meetings"] --> B["What do they want to know?
What information should be provided to truckers on this 511 CVO system?"]; A --> C["How do they want to get the information?
What are the best ways to deliver the 511 CVO information?"];
```

**What do they want to know?**

**What information should be provided to truckers on this 511 CVO system?**

**How do they want to get the information?**

**What are the best ways to deliver the 511 CVO information?**



# State & Regional 511 Web Sites

1. **Alaska** – <http://511.alaska.gov>
2. **Arizona** – <http://www.AZ511.com> (no CVO)
3. **California/Los Angeles** – <http://go511.com>
4. **California/San Bernardino/Riverside (Inland Empire)** – <http://ie511.org>
5. **California/Sacramento/Northern CA** – <http://www.sacregion511.org>
6. **California/San Francisco Bay Area** – <http://www.511.org>
7. **Colorado** – <http://www.cotrip.org/home.htm>
8. **Florida/ Statewide** – <http://www.FL511.com>
9. **Florida/ Southeast** – <http://www.511southflorida.com>
10. **Florida/ Tampa** – <http://www.511tampabay.com>
11. **Georgia** – <http://www.511ga.org>
12. **Idaho** – <http://511.idaho.gov>
13. **Iowa** – <http://www.511IA.org>
14. **Kansas** – <http://511.ksdot.org>
15. **Kentucky** – <http://www.511.KY.gov>
16. **Louisiana** – <http://www.511LA.org>
17. **Maine** – <http://www.511Maine.gov>
18. **Massachusetts** – <http://www.mass511.com>
19. **Minnesota** – <http://www.511MN.org>
20. **Montana** – <http://www.MDT511.com>
21. **Nebraska** – <http://www.511nebraska.org>
22. **New Hampshire** – <http://www.511NH.com>
23. **New Jersey** – <http://www.511nj.org>
24. **New Mexico** – <http://nmroads.com>
25. **New York** – <http://www.511ny.org/commercialvehicles.aspx>
26. **North Carolina** – <http://www.NC511.com>
27. **North Dakota** – <http://www.dot.nd.gov/divisions/maintenance/511.htm>
28. **Northwest Passage CVO**  
(WA, ID, MT, WY ND, SD, MN, WI)  
<http://www.i90i94travelinfo.com/index.php?map=truckstops>
29. **Ohio/ Cincinnati** – <http://www.artimis.org/511.php>
30. **Oregon** – <http://www.tripcheck.com/pges/at511.asp>
31. **Pennsylvania** – <http://www.511pa.com>
32. **South Dakota** – <http://www.sddot.com/511.asp>
33. **Tennessee** – <http://www.tn511.com>
34. **Utah** – <http://www.utahcommuterlink.com/511.aspx>
35. **Vermont** – <http://www.511VT.org>
36. **Virginia** – <http://www.511virginia.org>
37. **Washington State** – <http://www.wsdot.wa.gov/traffic/511>
38. **Wisconsin** – <http://www.511wi.gov>
39. **Wyoming** – <http://www.wyroad.info>

***States have widely varying levels and types of CVO information.***

# How do truckers in the San Diego & Imperial region currently receive traveler information?



84%



53%

- Two-way radios
- (Note: Nextel users surveyed often referred to their push-to-talk phones as two-way radios.)

28%



21%

# San Diego & Imperial Counties – *California's border with Mexico and Arizona*



Base Map: Google Earth™



# Each type of operation represents a somewhat different CVO customer



A traveler information system for trucking must accommodate a variety of industry segments and types of operations

- **Local Delivery**
- **Short/Regional Haul**
- **Long Haul**

# Snapshot of Local Delivery Truckers



Typically picks up and delivers cargo within a tight radius; up to about 30 miles from Origin/Destination. Knows routes, local conditions, & services



# Snapshot of Short Haul & Regional Truckers



**Pick ups and delivers cargo across county lines; may go as far as Central/Northern CA, AZ, NV. Usually knows routes, available services. Origins /Destinations can vary, may not know conditions.**

# Snapshot of Long-haul Truckers



**Routinely picks up and delivers cargo across state lines or international borders; may travel thousands of miles per month. Origins/Destinations may vary widely. May or may not know routes, available services or local conditions.**



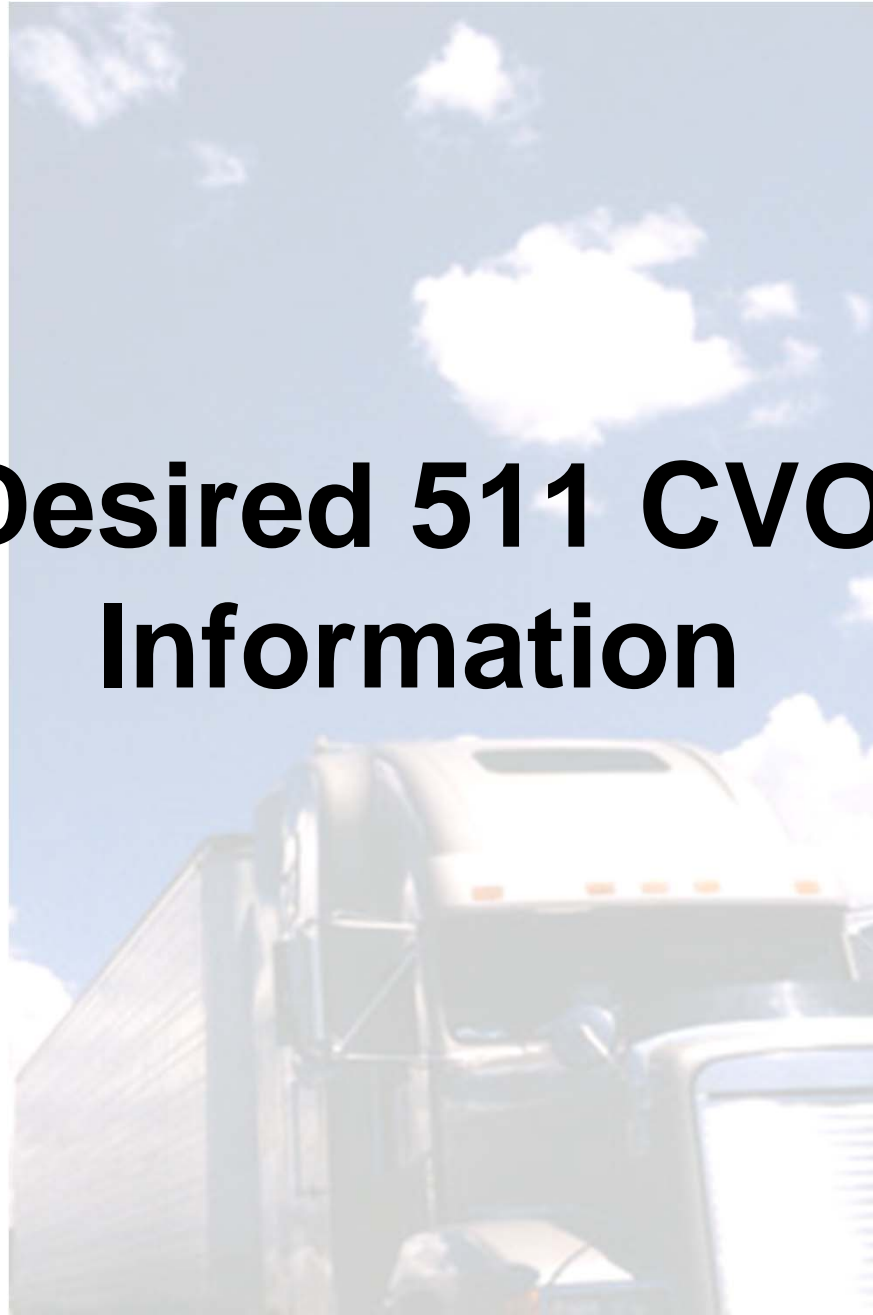
# Owner-operators & small trucking companies dominate the industry

Small companies and owner-operators are represented in all types of trucking operations. Owner-operators are especially drayage, regional, and long-haul trucking.

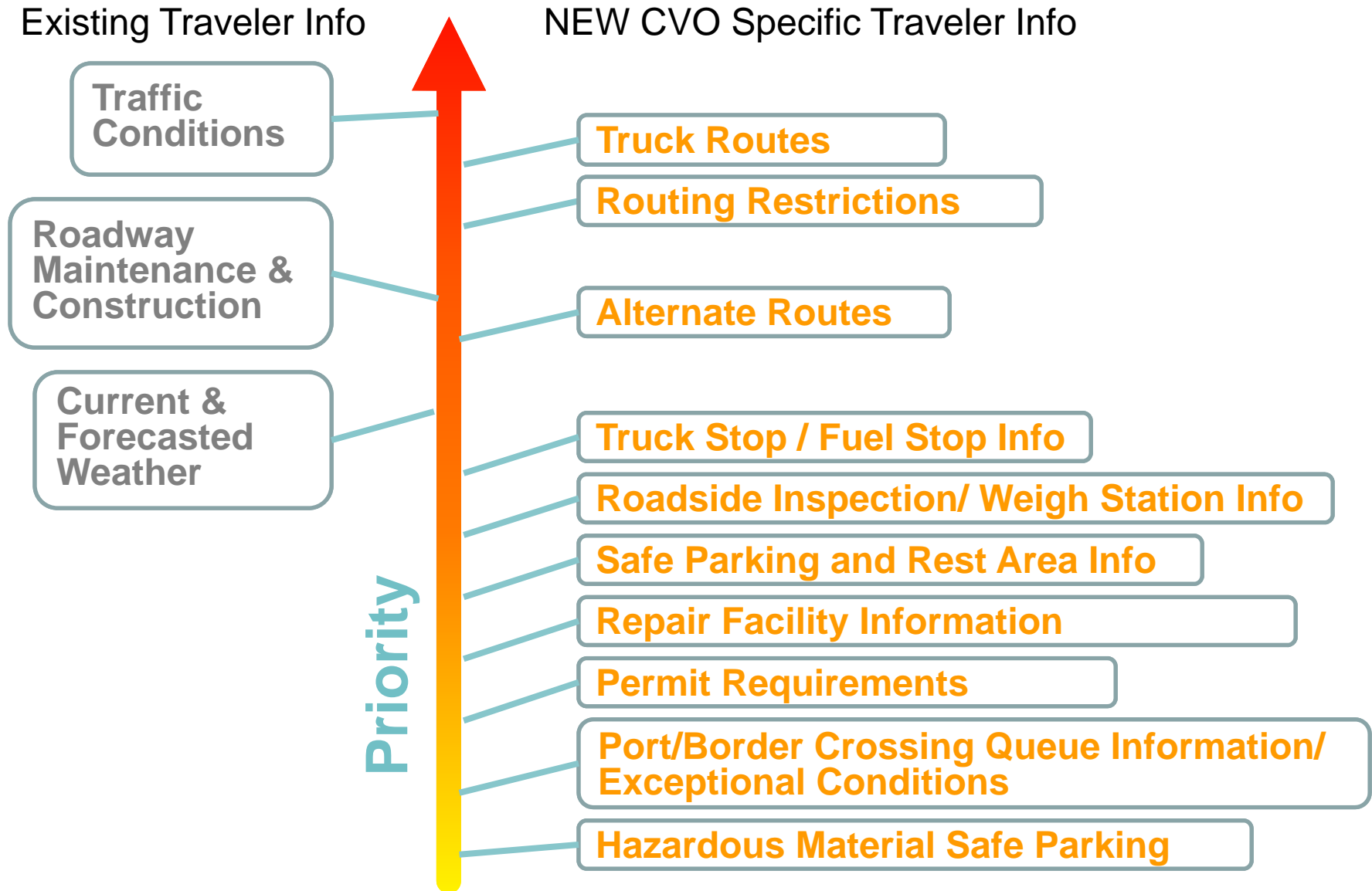


They account for 65.6 % of San Diego 511's internet and intercept survey respondents

# **Desired 511 CVO Information**



# Desired Traveler Information





# Truck Routes, Routing Restrictions & Alternate Routes

- Permanent, Local, National Network or STAA Routes
- Permanent or Temporary Restrictions
  - Height
  - Weight
  - Width and Length (KPRA advisories)
- Alternate Routes
  - Construction
  - Emergencies
  - Special Events
  - Other Exception Conditions



# Fuel Stop & Truck Stop Information

- Fuel Prices!
- Fuel Station Locations
- Truck Stop Locations
  - Services & Amenities



Photo from AFP/Getty Images

*D&B Trucking owner-operator Dave Lilly fills his truck's tank at a truck stop and diesel fueling depot in Oak Hills. Lilly said that it is becoming more and more difficult to support his family of three as the cost of diesel fuel continues to rise and his profits diminish.*

# Roadside Inspection and Weigh Stations

- Roadside Safety Inspection Stations (CHP scales)
  - Location & Contact Info
- Public Scales
  - Location & Contact Information
  - Hours





# Truck Repair Shops and Mobile Services

- Truck Repair Service Facilities
- Tire Services
- Roadside Mobile Repair Services
- Forklift Services
- Heavy-Tow Services
- Locations, Contact Information and Service Hours



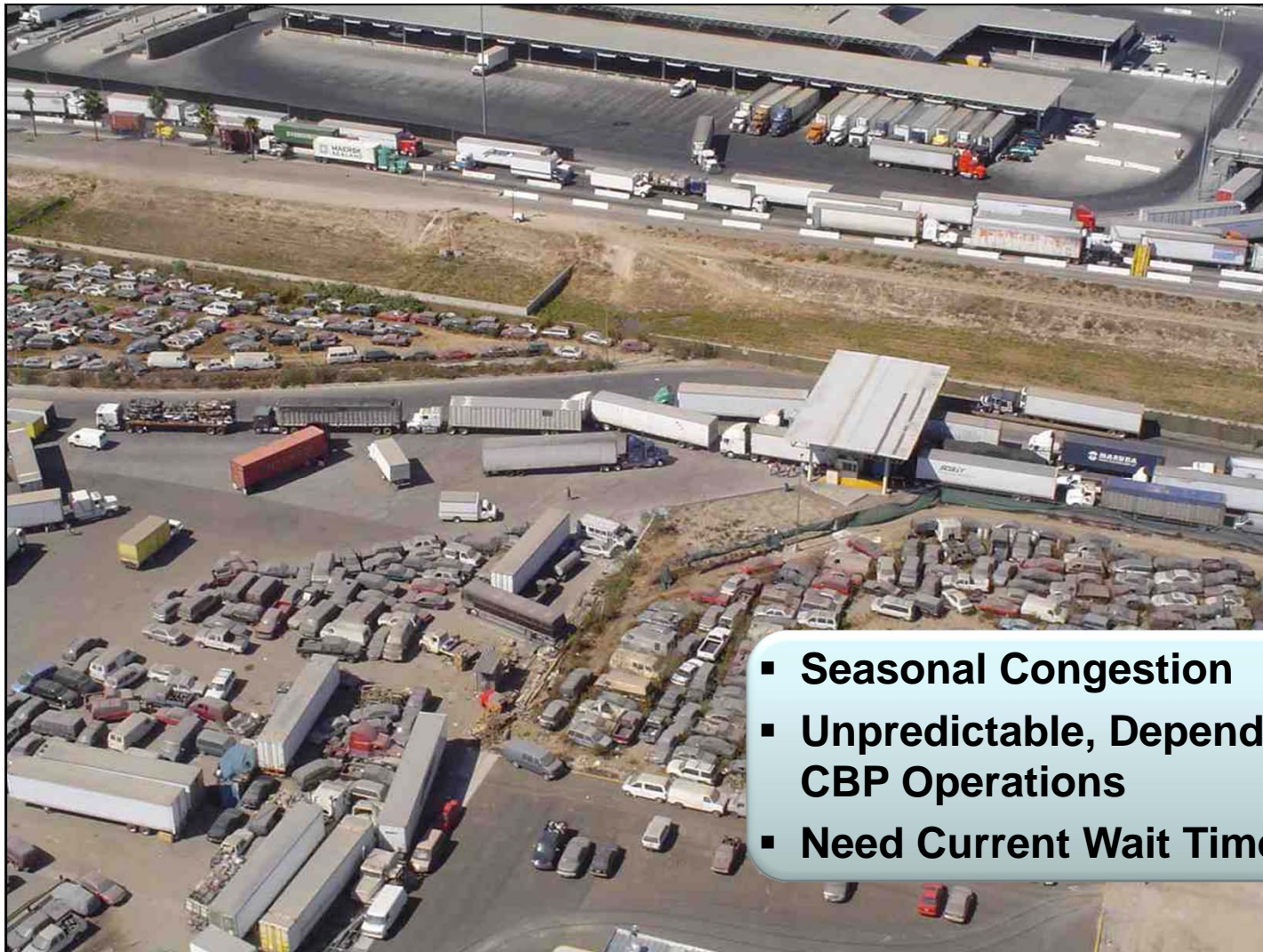


# Parking, Rest Areas, & Hazmat Parking

- Safe, Convenient Parking
- Need Large, Centrally Located Truck Stops
- Need Smaller Safe Parking Areas
- Need Safe HAZMAT Parking



# International Border Queue and Exception Conditions Information



- **Seasonal Congestion**
- **Unpredictable, Depending on CBP Operations**
- **Need Current Wait Times**

# **Implementation of SD511 CVO**

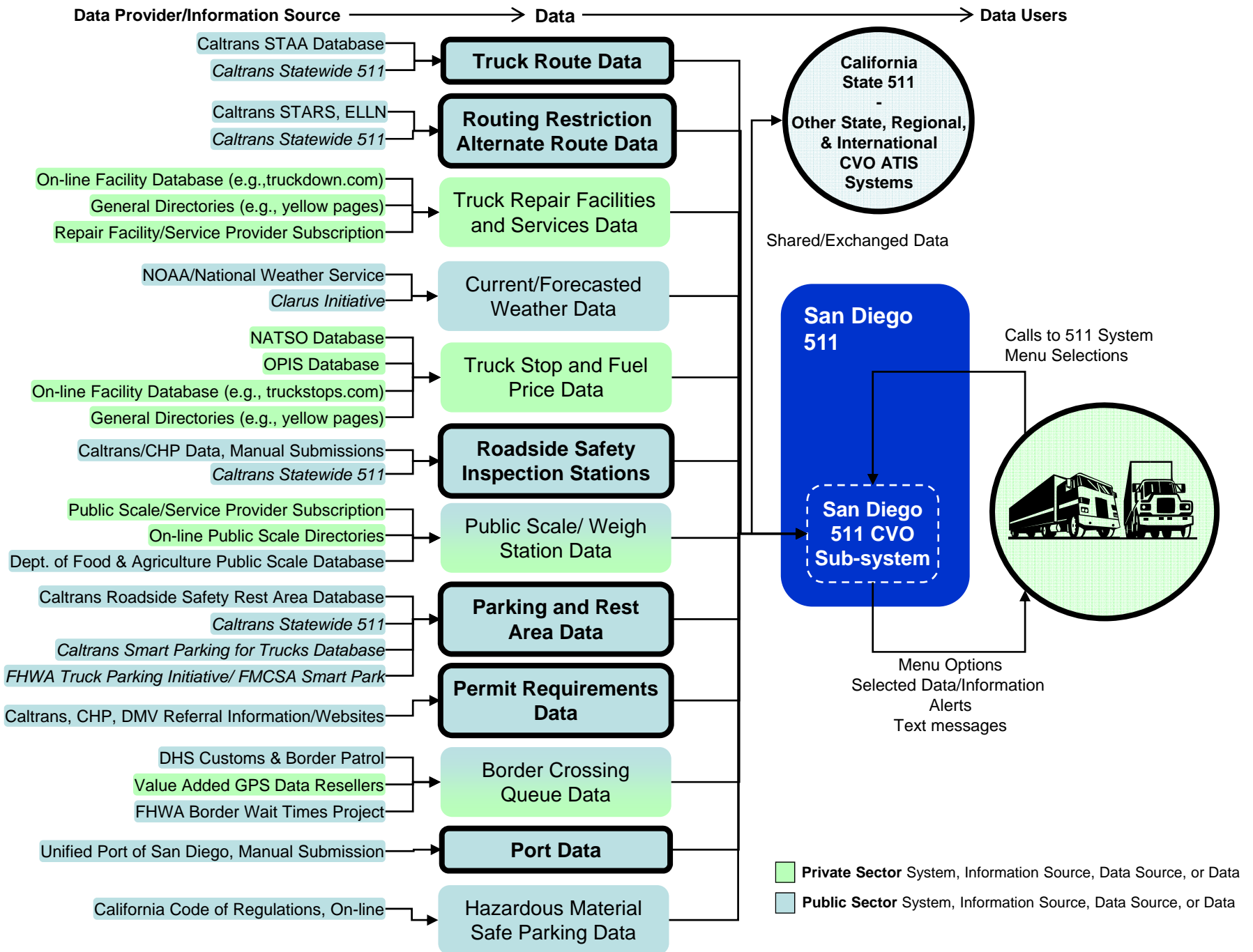


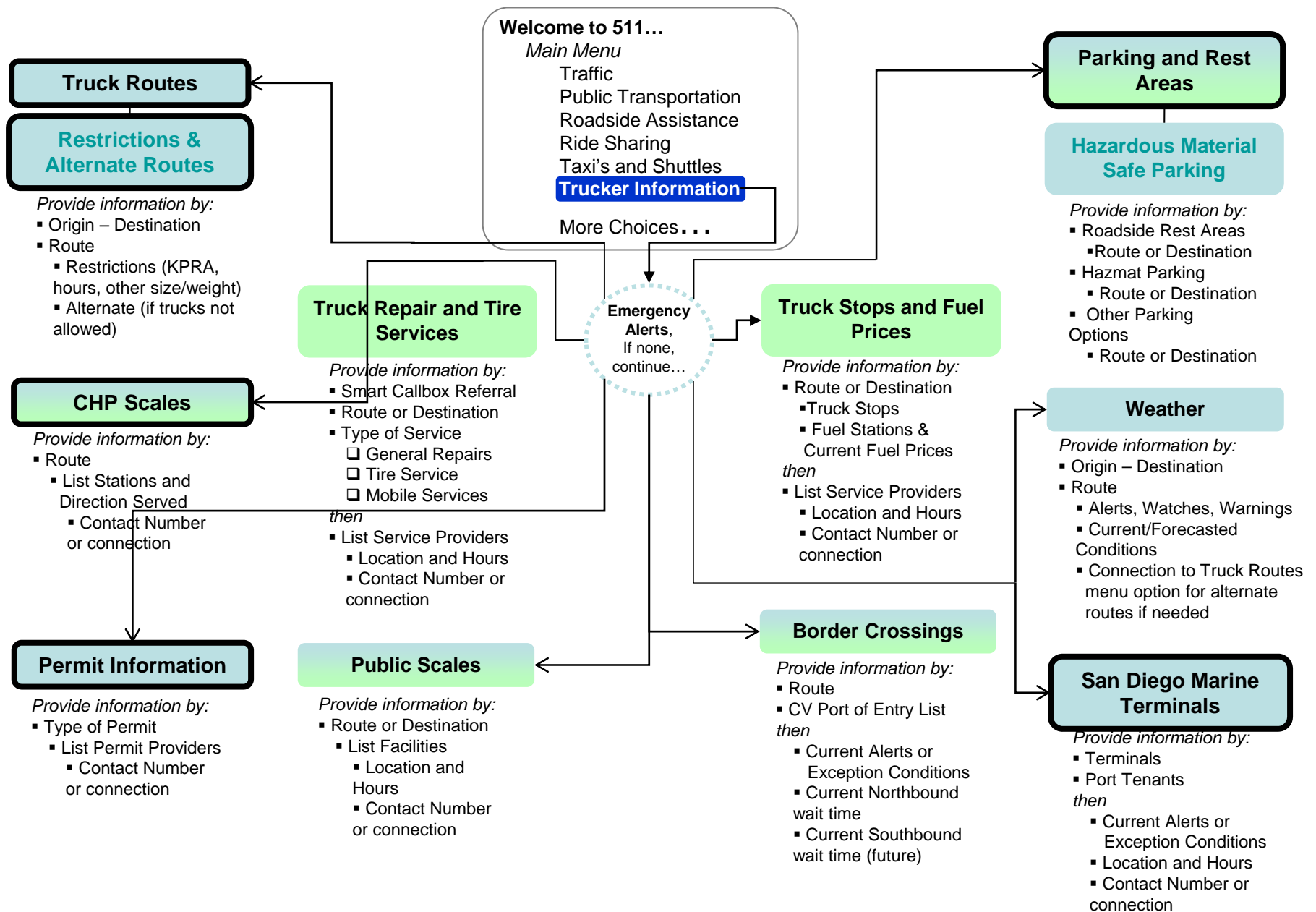


# Implementation Highlights

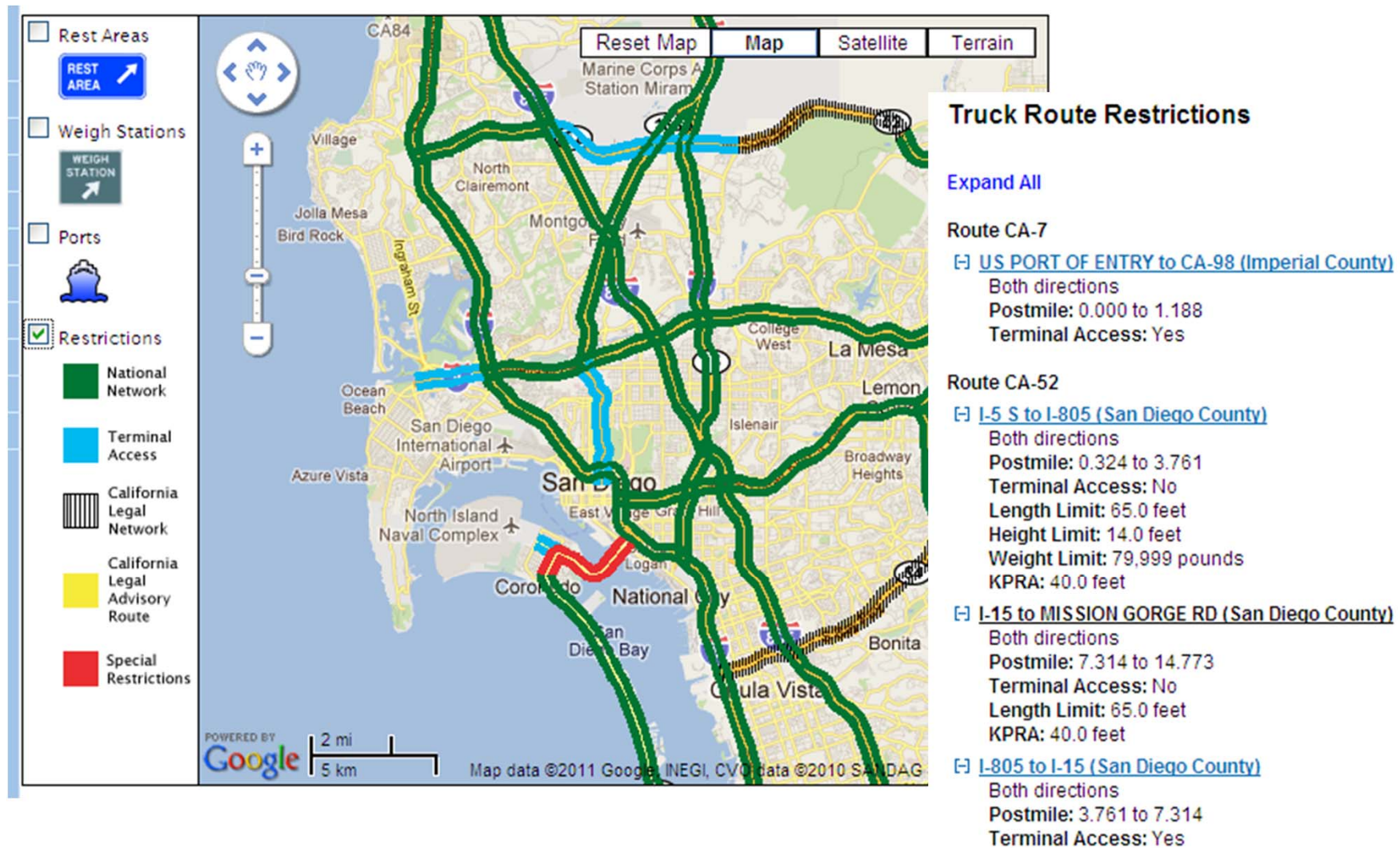
- Phase II CVO Data Elements
  - Truck Route Restrictions, Weigh Stations,
  - Rest Areas, Ports, and Permits
- Launched CVO Beta Website ([www.511sd.com](http://www.511sd.com)) on November 2010.
  - Migration to Google Maps
- Integration of CVO to the Phone System
- IMTMS data feed (pending)







# SD511 Trucking Map





# SD511 Weigh Stations

## Weigh Stations

[Collapse All](#)

### Route CA-7

[\[-\] Calexico](#)

Calexico, Imperial County, (760) 768-4000

### Route CA-905

[\[-\] Otay Mesa](#)

San Diego, San Diego County, (619) 671-3000

### Route I-5

[\[-\] San Onofre](#)

Oceanside, San Diego County, (760) 430-7700

[\[-\] San Onofre](#)

Oceanside, San Diego County, (760) 430-7700

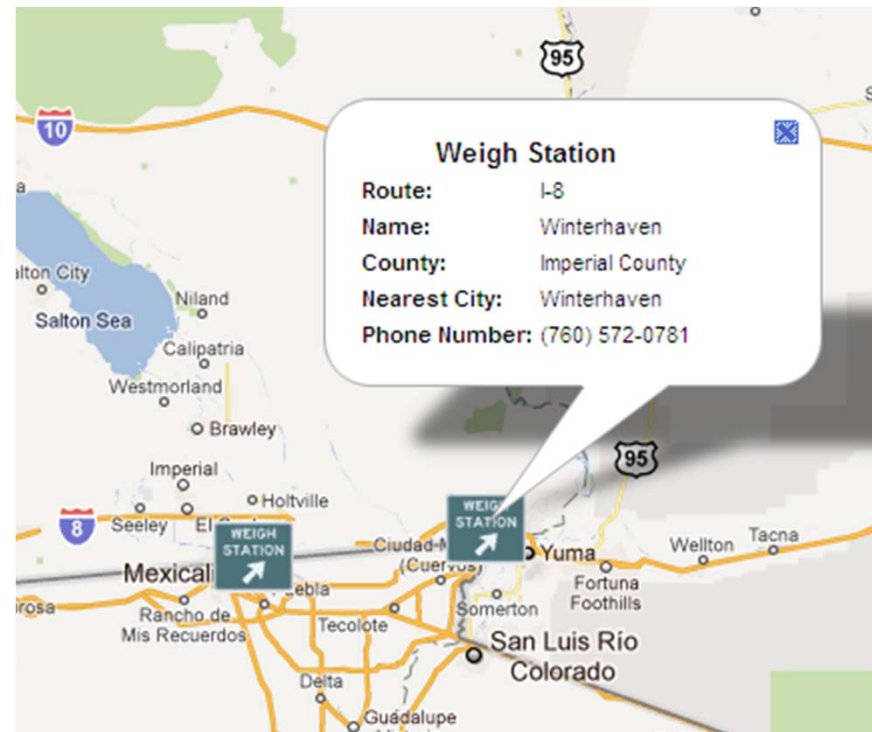
### Route I-8

[\[-\] Winterhaven](#)

Winterhaven, Imperial County, (760) 572-0781

### Route I-15

[\[-\] Rainbow](#)



# SD511 Rest Areas

## Rest Areas

[Expand All](#)

### Route CA-111 Both Directions

[TWO RIVERS - Willows](#)

### Route I-5 N

[Aliso Creek - Alpine](#)

### Route I-5 S

[Aliso Creek - Alta Sierra](#)

### Route I-8 Both Directions

[SAND HILLS - Los Banos](#)

[BUCKMAN SPRINGS - Mckinleyville-Willow Creek](#)

### Route I-8 E

[SUNBEAM - Mckinleyville-Trinidad](#)

6 mi. W. of El Centro in Imperial County

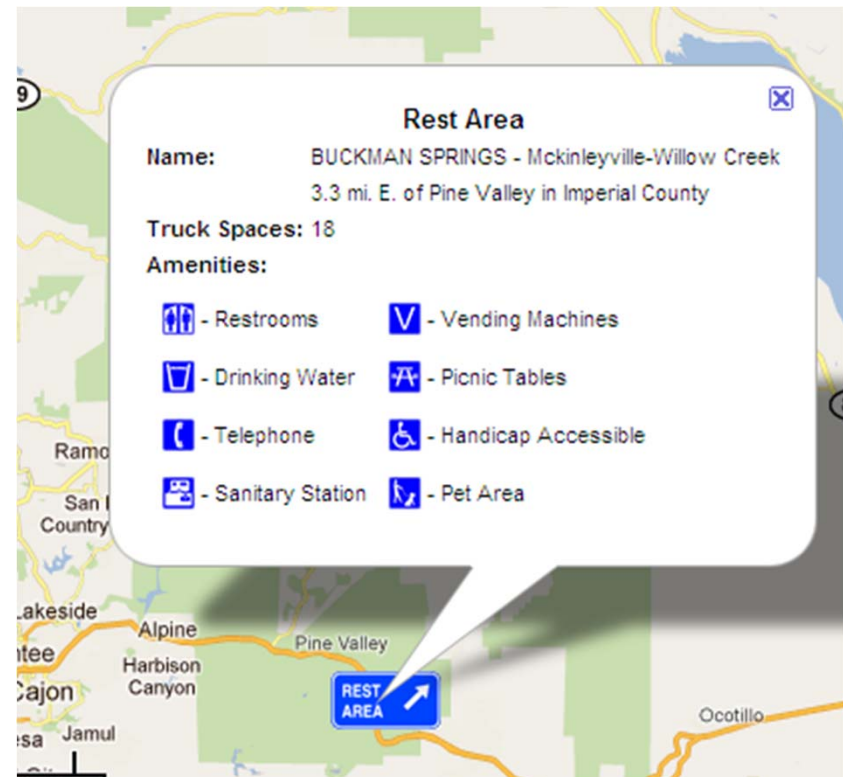
Truck Spaces: 9

Amenities:

- |                                                                                                        |                                                                                                           |
|--------------------------------------------------------------------------------------------------------|-----------------------------------------------------------------------------------------------------------|
|  - Restrooms        |  - Vending Machines    |
|  - Drinking Water   |  - Picnic Tables       |
|  - Telephone        |  - Handicap Accessible |
|  - Sanitary Station |  - Pet Area            |

### Route I-8 W

[SUNBEAM - Mckinleyville-Trinidad](#)



# SD511 Ports

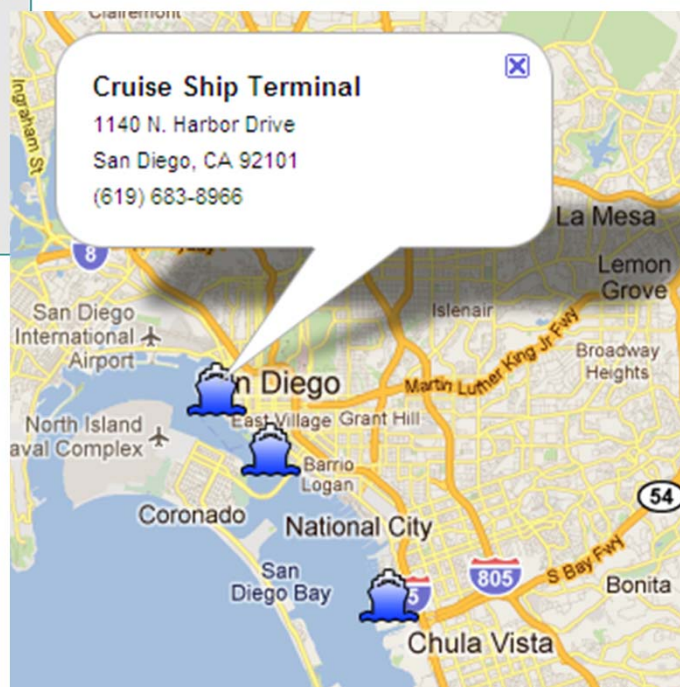
## Truck Route Restrictions

- All terminal reporting no problems  
Posted: July 7, 2010 2:23 pm

## Terminal Locations

- **Tenth Avenue Marine Terminal** [\(map\)](#)  
623 Switzer Street  
San Diego, CA 92101  
(619) 686-6346
- **National City Marine Terminal** [\(map\)](#)  
400 W. Bay Marine Dr.  
National City 91950  
(619) 683-8963
- **Cruise Ship Terminal** [\(map\)](#)  
1140 N. Harbor Drive  
San Diego, CA 92101  
(619) 683-8966

## Terminal Locations



## Tenants

- |                                                                                                                                                                                                                                                                                                                                                                                                                                                                                                                                                                                                                                                                                                                                                                                        |                                                                                                                                                                                                                                                                                                                                                                                                                                                                                                                                                                                                                                                                                                                                                                                                                                          |                                                                                                                                                                                                                                                                                                                                                                                                                                                                                                                                                                                                                                                                                                                  |
|----------------------------------------------------------------------------------------------------------------------------------------------------------------------------------------------------------------------------------------------------------------------------------------------------------------------------------------------------------------------------------------------------------------------------------------------------------------------------------------------------------------------------------------------------------------------------------------------------------------------------------------------------------------------------------------------------------------------------------------------------------------------------------------|------------------------------------------------------------------------------------------------------------------------------------------------------------------------------------------------------------------------------------------------------------------------------------------------------------------------------------------------------------------------------------------------------------------------------------------------------------------------------------------------------------------------------------------------------------------------------------------------------------------------------------------------------------------------------------------------------------------------------------------------------------------------------------------------------------------------------------------|------------------------------------------------------------------------------------------------------------------------------------------------------------------------------------------------------------------------------------------------------------------------------------------------------------------------------------------------------------------------------------------------------------------------------------------------------------------------------------------------------------------------------------------------------------------------------------------------------------------------------------------------------------------------------------------------------------------|
| <ul style="list-style-type: none"> <li>■ <b>Apex Bulk</b><br/>12531 Violet Rd.<br/>Adelanto, CA 92301<br/>(760) 246-8688</li> <li>■ <b>BNSF Railway Co.</b><br/>1342 Cesar Chavez Pkwy.<br/>San Diego, CA 92113<br/>(909) 386-4800</li> <li>■ <b>CBP Port of San Diego</b><br/>610 West Ash Street Ste 1005<br/>San Diego, CA 92101<br/>(619) 685-4303</li> <li>■ <b>CEMEX</b><br/>16888 North E Street<br/>Victorville, CA 92394<br/>(760) 952-4853</li> <li>■ <b>Dole Fresh Fruit Co.</b><br/>850 Water Street<br/>San Diego, CA 92101<br/>(619) 615-1711</li> <li>■ <b>Eastern Car Liner</b><br/>674 Switzer Street<br/>San Diego, CA 92101<br/>(619) 232-0019</li> <li>■ <b>ECL America</b><br/>1225 West 190th Street Ste 410<br/>Gardena, CA 90248<br/>(310) 353-4310</li> </ul> | <ul style="list-style-type: none"> <li>■ <b>Electric Cafe</b><br/>5545 Gaines Street<br/>San Diego, CA 92110<br/>(619) 497-6001</li> <li>■ <b>Family Health Centers of San Diego</b><br/>823 Gateway Center Way<br/>San Diego, CA 92102<br/>(619) 515-2356</li> <li>■ <b>General Steamship Corp.</b><br/>662 Switzer Street<br/>San Diego, CA 92101<br/>(619) 235-0462</li> <li>■ <b>Kinder Morgan (for Yara No. American)</b><br/>1770 Thor St.<br/>San Diego, CA 92113<br/>(619) 236-9723</li> <li>■ <b>Moody's Lunch Service</b><br/>4637 Market Street<br/>San Diego, CA 92102<br/>(619) 262-0773</li> <li>■ <b>General Steamship Corp.</b><br/>662 Switzer Street<br/>San Diego, CA 92101<br/>(619) 235-0462</li> <li>■ <b>San Diego Refrigerated</b><br/>802 Terminal Street<br/>San Diego, CA 92101<br/>(619) 702-9334</li> </ul> | <ul style="list-style-type: none"> <li>■ <b>Searles Valley Minerals</b><br/>P.O. Box 367<br/>Trona, CA 93592<br/>(760) 372-2259</li> <li>■ <b>SSA Marine</b><br/>1090 Water Street<br/>San Diego, CA 92101<br/>(619) 544-1090</li> <li>■ <b>Stella Maris Seafarers Center</b><br/>1590 Jason Street<br/>San Diego, CA 92154<br/>(619) 702-4703</li> <li>■ <b>The Jankovich Company</b><br/>961 E. Harbor Drive<br/>San Diego, CA 92101<br/>(619) 232-4939</li> <li>■ <b>Transmarine Navigation Corp</b><br/>686 Switzer Street<br/>San Diego, CA 92101<br/>(619) 231-3570</li> <li>■ <b>Yara North America, Inc</b><br/>6150 Stoneridge Mall Road Ste 335<br/>Pleasanton, CA 94588<br/>(925) 467-0107</li> </ul> |
|----------------------------------------------------------------------------------------------------------------------------------------------------------------------------------------------------------------------------------------------------------------------------------------------------------------------------------------------------------------------------------------------------------------------------------------------------------------------------------------------------------------------------------------------------------------------------------------------------------------------------------------------------------------------------------------------------------------------------------------------------------------------------------------|------------------------------------------------------------------------------------------------------------------------------------------------------------------------------------------------------------------------------------------------------------------------------------------------------------------------------------------------------------------------------------------------------------------------------------------------------------------------------------------------------------------------------------------------------------------------------------------------------------------------------------------------------------------------------------------------------------------------------------------------------------------------------------------------------------------------------------------|------------------------------------------------------------------------------------------------------------------------------------------------------------------------------------------------------------------------------------------------------------------------------------------------------------------------------------------------------------------------------------------------------------------------------------------------------------------------------------------------------------------------------------------------------------------------------------------------------------------------------------------------------------------------------------------------------------------|

## Cruise Ship Screening Lot

No content provided

# Truck Permitting Information

## Permits

[State of California](#)  
[Caltrans Vehicle Registration and Trip Permits](#)  
[Caltrans North and South Region Transportation Permits Offices](#)

[California Fuel Permits](#)  
[Board of Equalization, IFTA Information](#)

## Registries

[California Air Resources Board, Drayage Truck Registry \(DTR\)](#)  
*(For all trucks servicing Port of San Diego and other California ports/intermodal terminals)*  
[Information](#) | [Registration](#)

[California Air Resources Board, Transportation Refrigeration Unit \(TRU\) Registry](#)  
*(For trucks/trailers based in California and equipped with refers)*  
[Information](#) | [Registration](#)

## State of California Truck Information

[California Department of Transportation \(Caltrans\), Office of Truck Services](#)

[Truck Size and Weight Information](#)  
[Length](#) | [Overhang](#) | [Width](#) | [Height and Low Clearances](#) | [Weight](#)  
For size and weight exemptions see [Caltrans Office of Truck Services Website](#)

[DMV Motor Carrier Services](#)  
*Includes IRP, URC, MCP Permits, Vehicle Registration, CDL, and other related information*  
[California DMV Motor Carrier Services Home Page](#)

[DMV Field Office Locator Maps](#)  
[San Diego County - San Diego \(Central\)](#)  
[San Diego County - San Diego \(North & East\)](#)  
[Imperial County - Brawley & El Centro](#)



# Lessons Learned





## Lessons Learned

- 10) Truckers Speak a Different Language
- 9) Rural Data Capability Assessment
- 8) Partner Agency Decision Making Authority
- 7) Partner Agency Engagement
- 6) Partner System & Data Readiness
- 5) Phased Implementation
- 4) MOUs & Operating Agreements
- 3) O&M and Marketing Funding
- 2) Trucking Industry Engagement & Relationships
- 1) Agency Champion

# Thank you. Questions?

San Diego Traffic, Transit & Commute Information:

<http://www.511sd.com>

Contact Information:

**Tracy Manzo**

[t1m@chevalresearch.com](mailto:t1m@chevalresearch.com)

619-922-5800



**Lisa Nelson, PE**

[lisa.nelson@telvent.com](mailto:lisa.nelson@telvent.com)

503-213-4579

