



The Importance of Traffic Incident Management on Rural Roads

Mark Brown and Barbara Hauser
MCDOT REACT Team

**National Rural ITS and ITS Arizona
Annual Conference
October 22, 2018**



Welcome

- Traffic Incident Management
- Regional Emergency Action Coordination Team (REACT)



What is a Traffic Incident?

A traffic incident is an emergency road user occurrence, a natural disaster, or other unplanned event that affects or impedes the normal flow of traffic.

Manual on Uniform Traffic Control Devices 6I.01, P02



What are Secondary Crashes?

Secondary Crashes are crashes that occur within the incident scene or within the queue or backup, including the opposite direction, resulting from an original incident

FHWA Focus States Initiative



Traffic Impacts

- Non-recurring incidents are responsible for 60% of delays
- Secondary accidents – 20% of all accidents are secondary accidents





What is Traffic Incident Management (TIM)?





Reasons for TIM

Number of personnel killed responding to scenes*:

- 10 law enforcement
- 4 fire and rescue
- 40-60 towing and recovery
- 700 work zone

*Yearly average





Reasons for TIM

"D" Drivers are killing us...

- ✓ Drunk,
- ✓ Drugged,
- ✓ Drowsy,
- ✓ Distracted, or
- ✓ Just plain... Dangerous





Urban and Rural Roads

TIM concepts apply to all roadways where traffic incidents might occur – both urban and rural





REACT

A regional approach
to traffic incident
management





TRAFFIC INCIDENT MANAGEMENT

REACT

(Regional Emergency Action Coordinating Team)

ALERT

(Arizona Local Emergency Response Team)
Led by ADOT on State Highways



AZTech is the collaborative regional management of the Intelligent Transportation System(ITS) developed for the Phoenix metropolitan area.



REACT Incident Management

Purpose

To minimize the negative impact of incidents on traffic mobility and safety by assisting local agencies within Maricopa County with traffic management for incidents that impact arterial roadways.





REACT Incident Management

Goals

- Safety of the traveling public
- Safety of responders
- Security of incident site
- Timely information to public
- Optimum mobility
- Minimize clearance time





REACT Incident Management

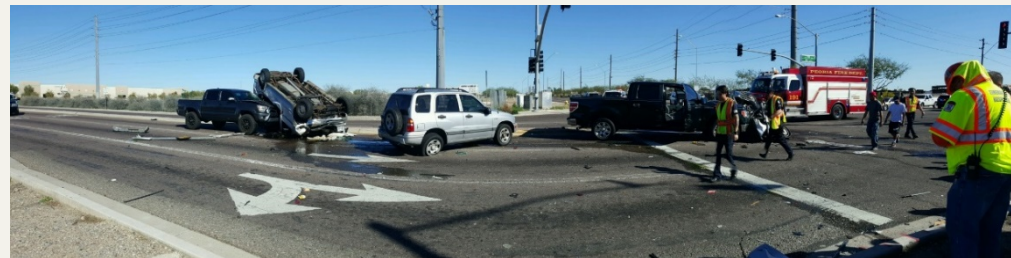
Responses

- Wildland fires
- House fires
- Homicide scenes
- HazMat
- Criminal investigations
- Weather damage



REACT Incident Management

- Dispatched by law enforcement
- Respond 24/7
- Closures more than two hours
- Establish/maintain emergency traffic management
 - Incident management
 - Traffic control
 - Signed detours
 - Traveler information





REACT Incident Management

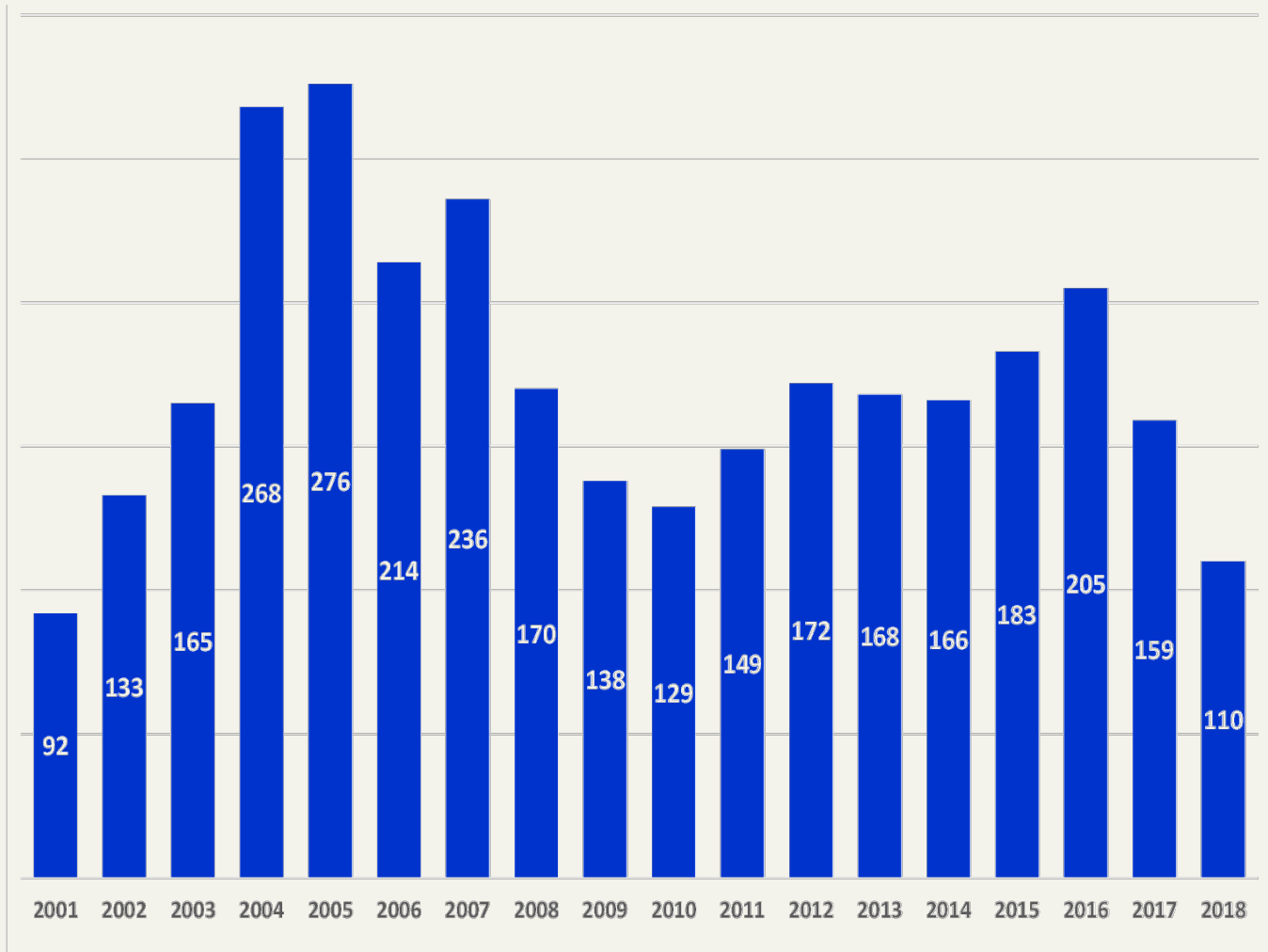
Unified Command is used on all incidents

- NIMS
- TIM





REACT Call outs 2001 - 2018



REACT Incident Management



- Services provided to five jurisdictions
- Average about 175 calls per year
- 55% of responses are for Maricopa County
- Partnership with ADOT ALERT





REACT Support Tools - TMC

A Critical Tool in Incident Management

- CCTV feeds (Arterial Roads)
- CCTV feeds (Freeways)
- Signal system
- Phoenix Fire CAD incident feeds
- Department of Public Safety CAD feeds
- Private partner data feeds
- Freeway Management System (FMS)/Regional Archive Data System (RADS) – travel time, speed maps, signal timing
- Weather
- Communication tools with other TMC's/TOC and Emergency Management agencies
- Social media





REACT Support Tools - ARIS

AZTech Regional Information System



Mon 10/15/2018 8:35 AM

ARIS <aztecharis@mcdot-its.com>

ARIS | at N 35TH AV/W SWEETWATER AV ,Phoenix. (Phoenix.gov, Fire)

o Barbara Hauser - MCDOTX

Status	ITIS	Description
NEW 	Incidents/Crashes incident	at N 35TH AV/W SWEETWATER AV ,Phoenix. From 10/15/18 8:34 AM To 10/16/18 8:34 AM Event 18381634 click for ARIS Tactical Screen

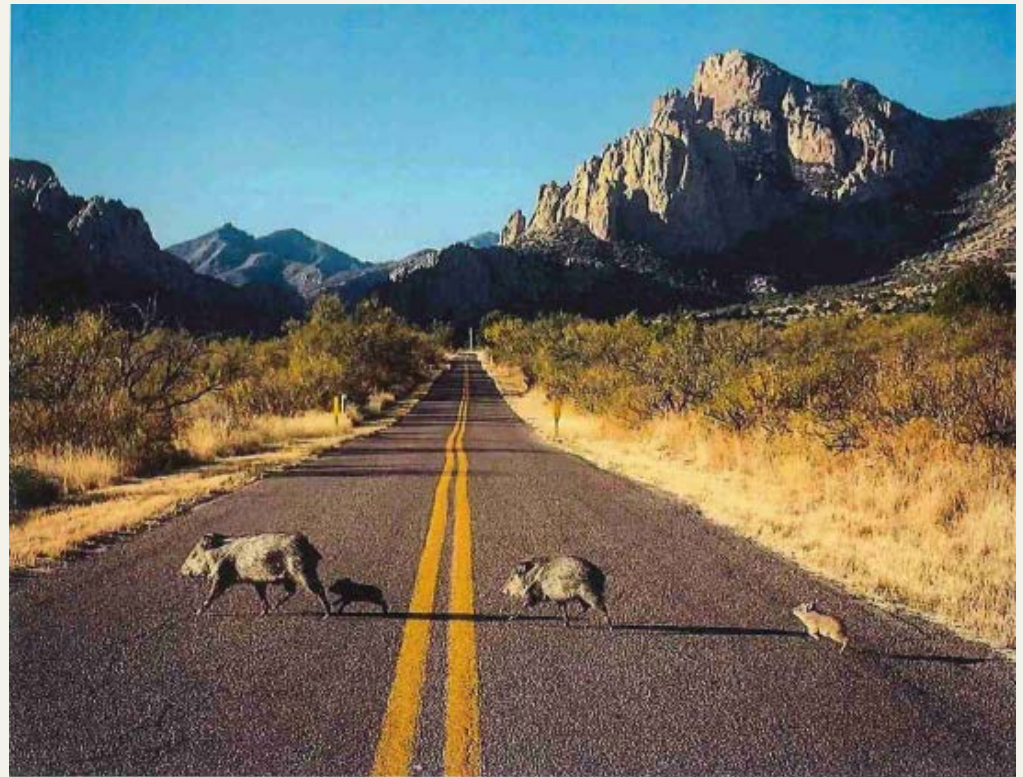
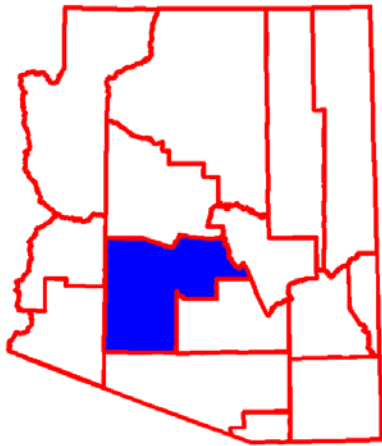
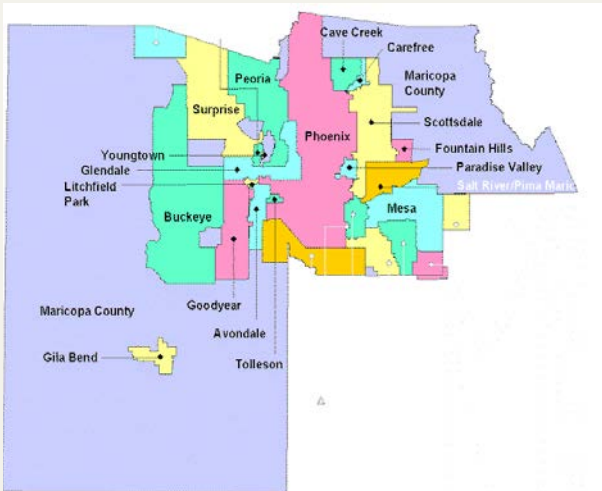
This Information provided by the AZTech Regional Information System (ARIS). You are receiving this email because you have subscribed to receive ARIS notifications. To provide feedback or to unsubscribe please [contact us](#)

Event: 18381741 Incidents/Crashes incident at W BELL RD/N I17 ,Phoenix. From 10/15 10:04am to 10/16 10:04am

The map displays the incident location at the intersection of W Bell Rd and N I17 in Phoenix. A red warning icon is placed at the intersection. Surrounding areas include Desert Pines, Bellair Plaza, Meadows Condominium, Sundown, Monte Cristo Estates, Villas at Tierra Buena, Verde Real, Via Citta Condominium, Shadow Canyon, Rancho Encanto, Mission Square, Arizona Business Park, Village Meadows, Phoenix Northgate, Northgate at Grandview, Northgate, Turf Village, Moon Valley Meadows, Turf Paradise Marketplace, Turf Plaza, Bell Road Autopark, Bellvue, Alcove on Avenue, Central Place North, Greenbell, Las Meridas, Sandahl Homes, and Moon Valley. Major roads shown include W Bell Rd, W Groves Ave, W Greenway Rd, W Coral Gables Dr, N 29th Ave, N 35th Ave, and N I17.



Maricopa County





Low Traffic Volume

False sense of security



"D" Drivers



Detours



Longer detours





Questions

Barbara Hauser

TMC Coordinator

Transportation Systems
Management Division

ITS Branch

Maricopa County DOT

barbarahauser@mail.maricopa.gov

602-506-6218

Mark Brown

Incident Management Specialist/REACT
Transportation Systems Management
Division

ITS Branch

Maricopa County DOT

markbrown2@mail.maricopa.gov

602-506-8990

